



Web.: [www.ravandevelopers.com](http://www.ravandevelopers.com)

ARCHITECTS



STRUCTURAL CONSULTANTS



This Brochure is Presentation of Intended Idea of the Project. The Plan and Images may be changed or get Modified which will be Binding to all customers.



Exclusive Commercial Complex

CANOPUS





# CANOPUS

## SALIENT FEATURES

### LOCATION FEATURES

- Site located in the heart of city, posh and commercial road called Ghod.Dod Road.

### DESIGN FEATURES

- Metaphorical building enhancing business domination.
- All commercial shops are designed to maximum frontage along the road. And opening to the grand atria in the centre.
- Hi tech entrance with names display.
- Unfinished slab top to slab top height 130' on ground floor, 110' on first floor and 100' all other floors.
- Ultra modern state of art building with international appeal.
- Grand entrance lobby with excellent waiting lounge followed with the glorious atrium.
- Food courts.
- Environmentally sound building design.
- Designed accordingly to latest international codes.
- Building with maximum utilization of natural light to enlighten the internal space.
- Premium business amenities for individual on lines of corporate business culture.
- Building design with vastu consideration.

### TECHNO FEATURES

- Hassel free E - card system for electricity bill payment, E - letterbox and sensor lighting.

### ADMINISTRATION AND MAINTANANCE

- Professionally managed administration and maintenance.







# CANORUS

## PROJECT FACILITIES

### CAMPUS FACILITIES

- Grand central atria.
- Well defined circulation network for easy movement.
- Escalators for easy vertical movement apart from lifts and stairs.

### PARKING

- Visitor's parking space along the road length.
- Well designed basement parking facility.
- Sufficient two wheeler parking in front side and rear side of campus.
- Automatic boom barriers with wireless car identification.
- Multi level car parking.

### LIGHTING AND DISPLAY

- Well designed light post and signage along parking space.
- Well defined display of names of all shops on the road side.
- Building illumination for commercial attraction.
- Display screens in atrium for announcement / Advertisements, Display & live tell calls.

### GREEN BUILDING FEATURES

- Double glass with special reflective coating to ensure minimum sound permeability and low heat gain from opening.
- Efficient LED based public lighting system.

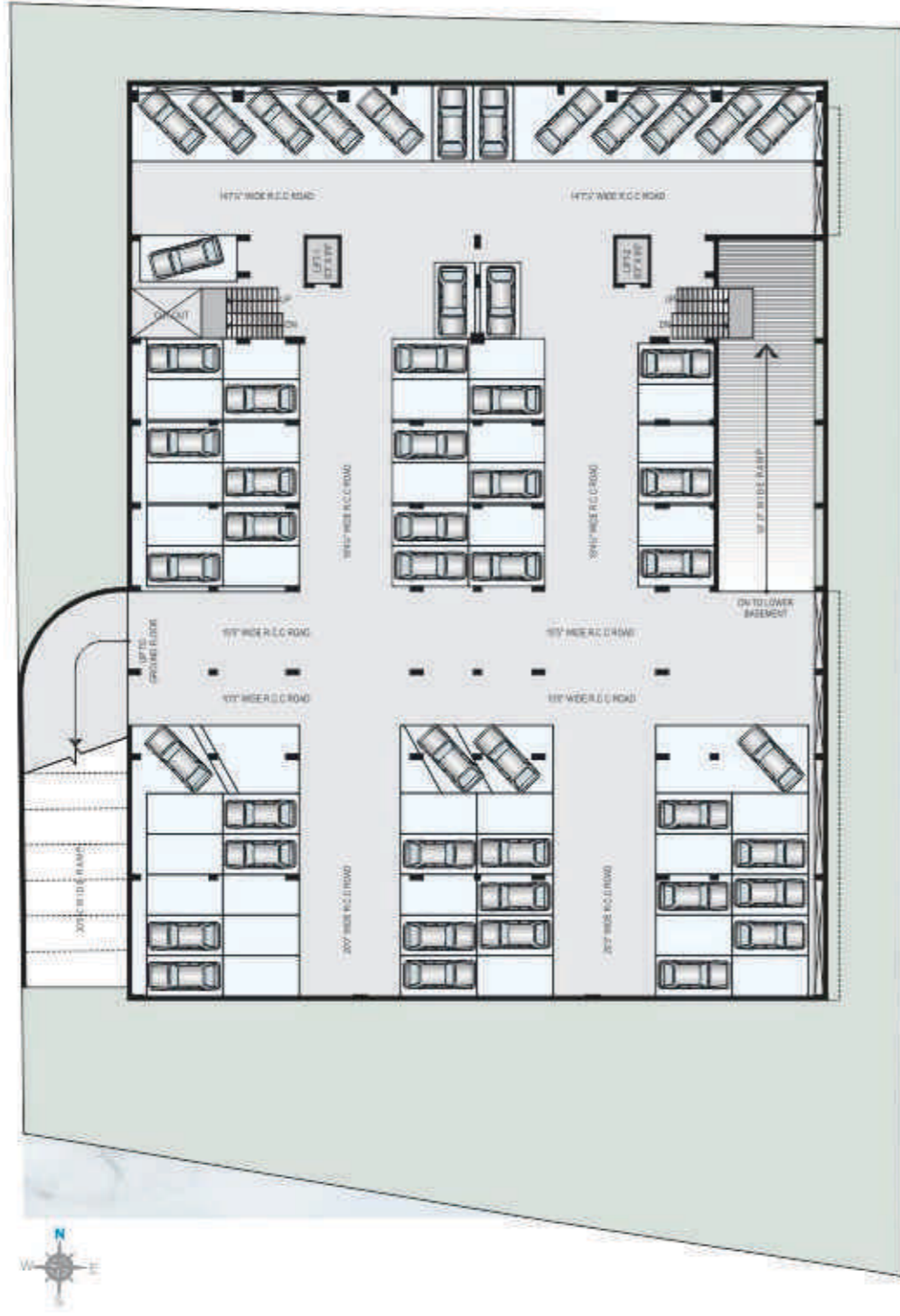
### AIR CONDITIONING

- Centrally Air conditioned retail mall with carbon dioxide (Co2) level's monitoring system.



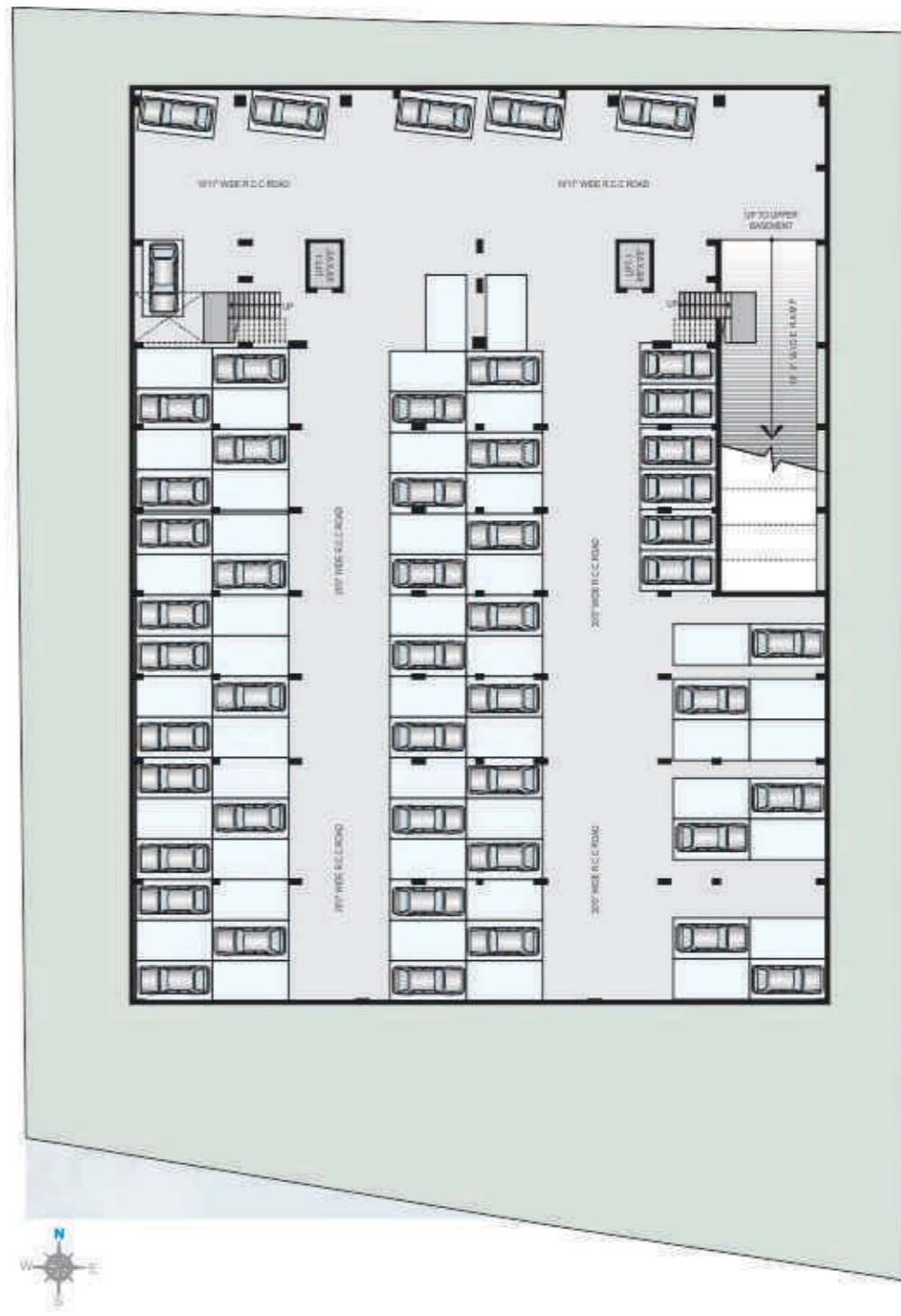


Basement - 1



# CANOPUS

Basement - 2







# CANOPUS

THE VALUE CLUB

TAGHeuer

Platform Store

Legnoart

BOSE

ColorPlus

asus app store

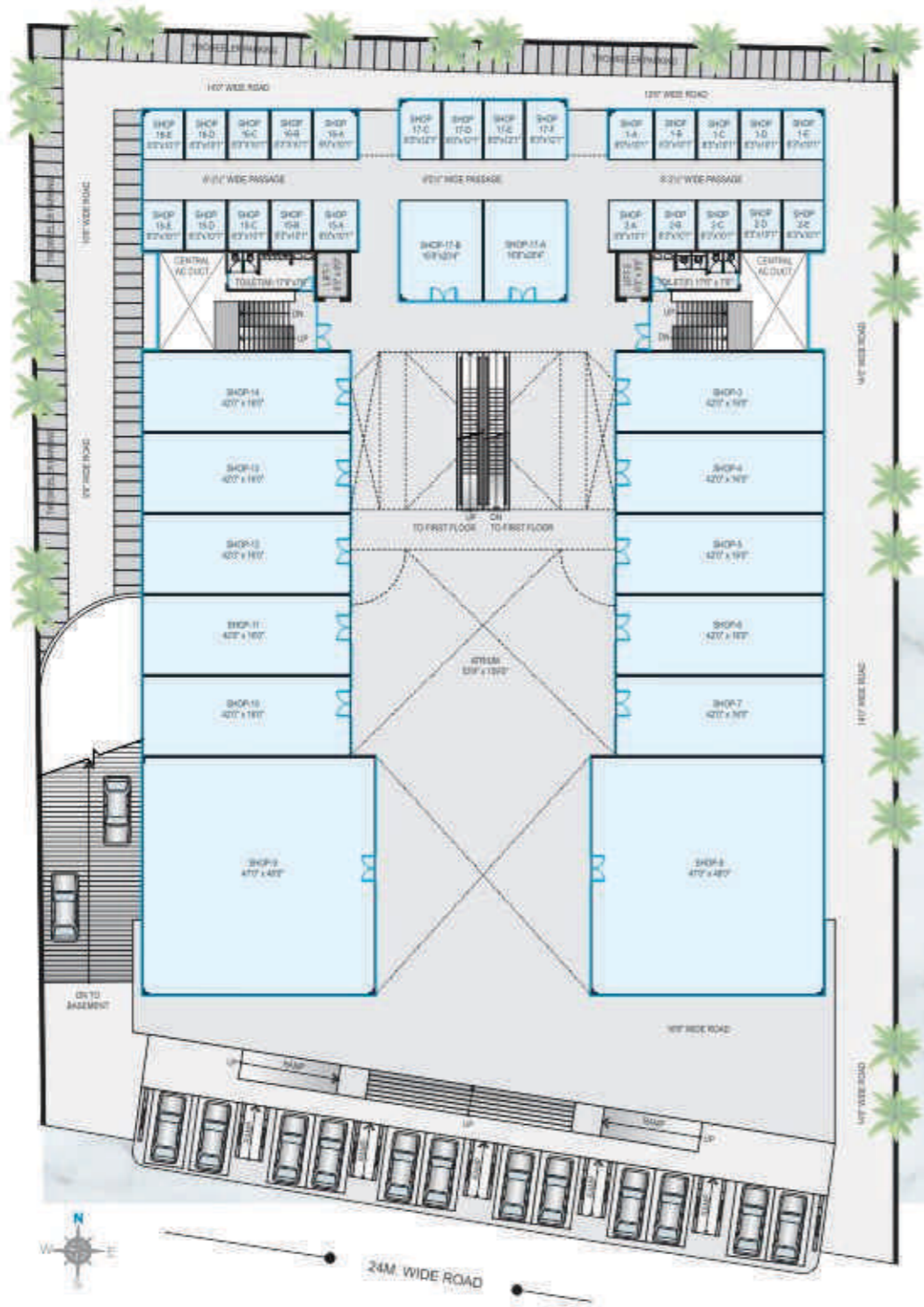
bellapierre COSMETICS

Ponillate

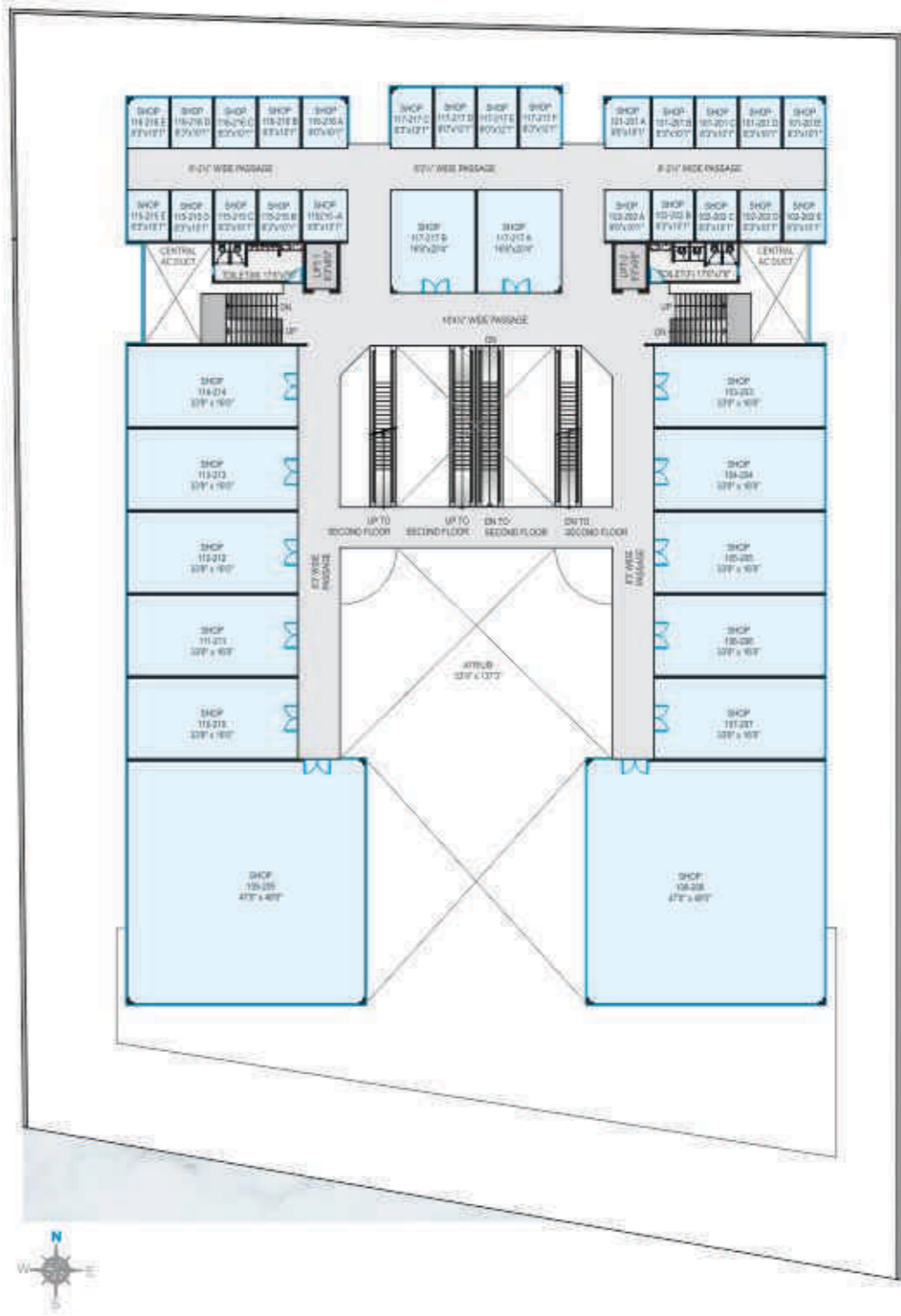
SWAROVSKI



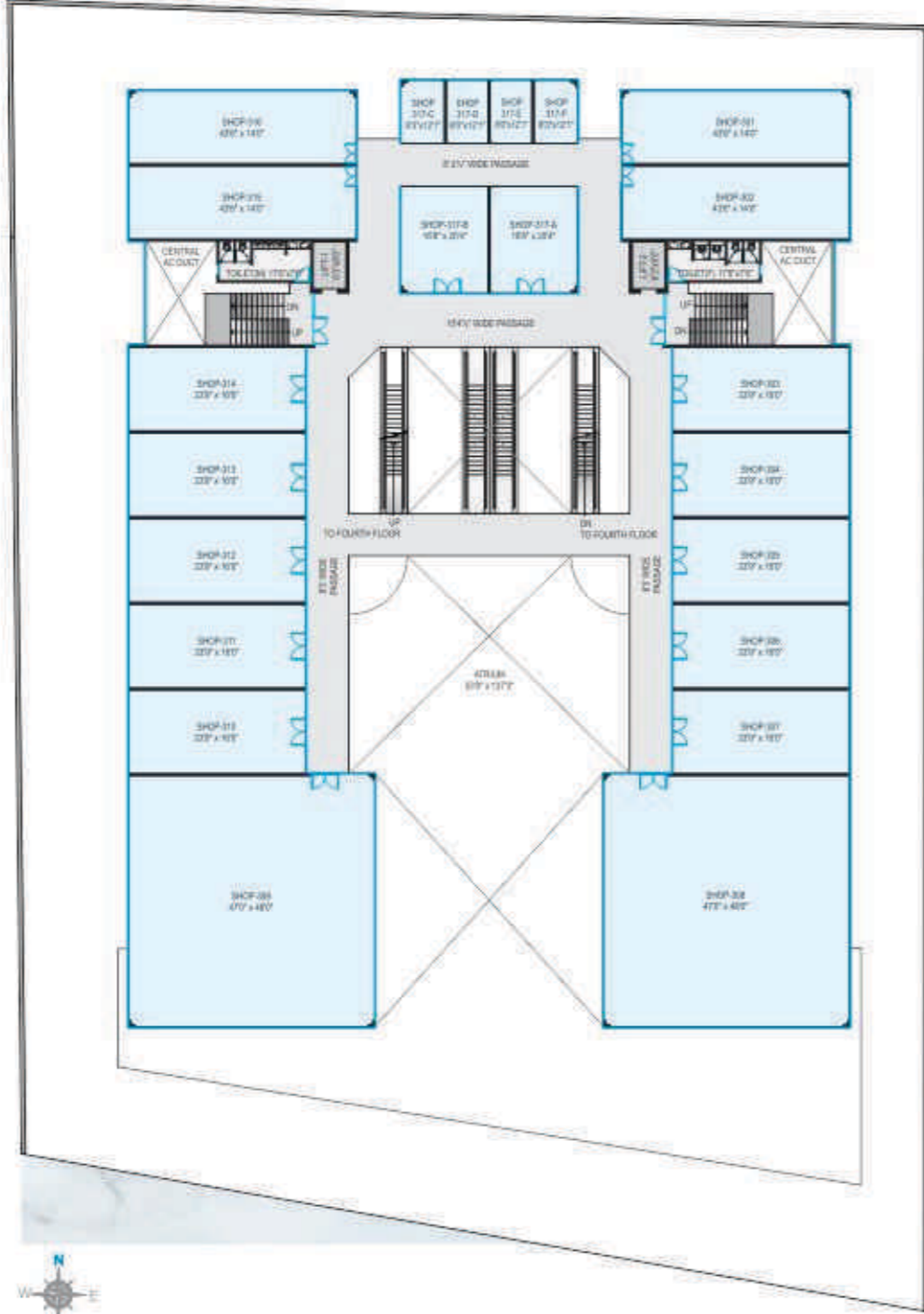
Ground Floor Plan



CANOPUS  
First & Second Floor Plan

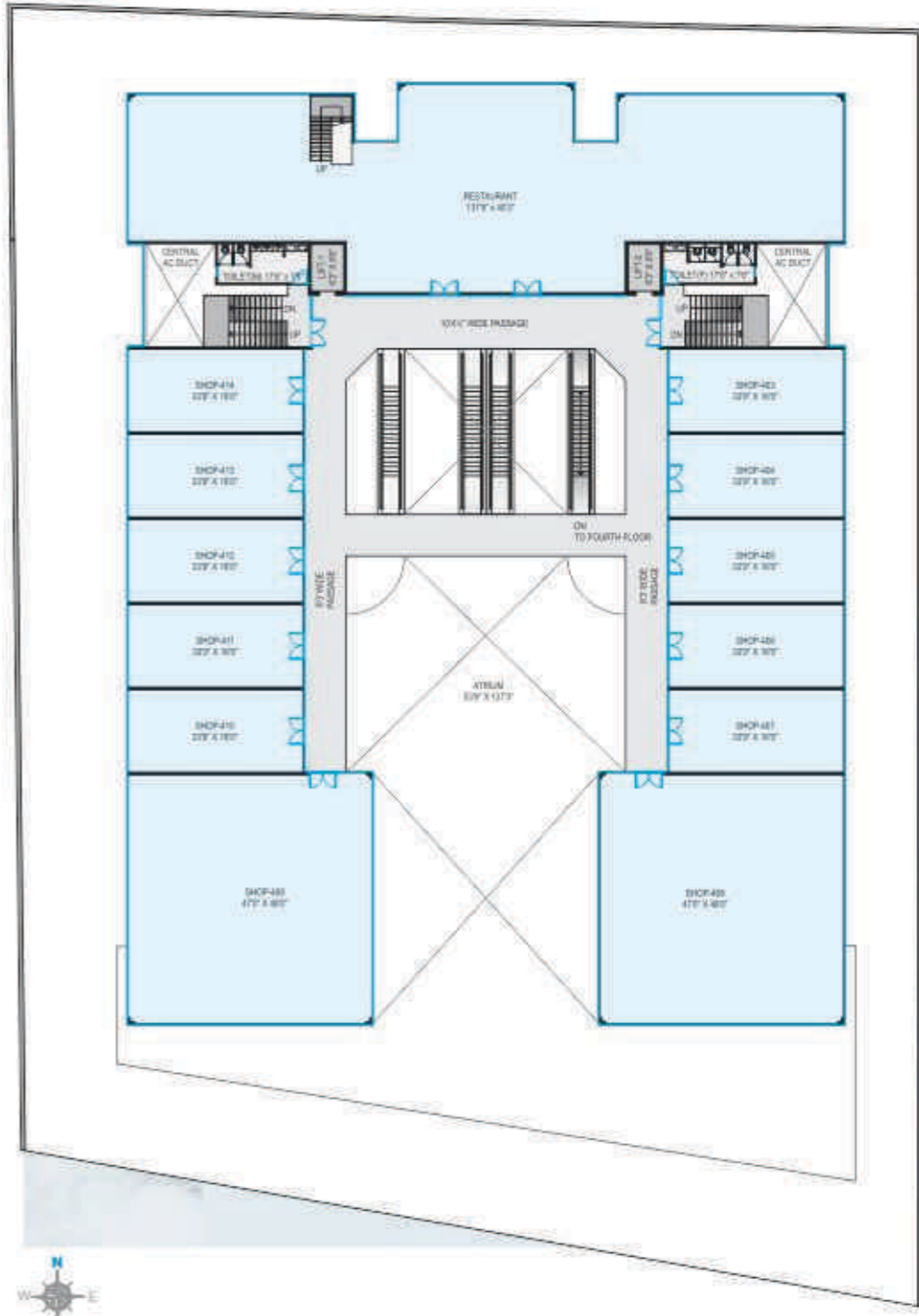


# Third Floor Plan



# CANOPUS

# Fourth Floor Plan







THE VALUE CLUB

TAG Heuer

Platinum Store

Legnoart

BOSE

ColorPlus

asus app store

bellapierre COSMETICS

Pouellato

SWAROVSKI

CANOPUS



# CANOPUS

## BUILDING FINISHES & SYSTEMS

### CONSTRUCTION

- Earthquake resistant space frame and full ductile detailing.
- R.C.C frame structure as per I.S.I norms with inside fine sand faced plaster and outside double coat sand faced plaster.
- Regular cube testing, sieve analysis, slump cone, core testing and cements strength analysis.
- Use of treated water for construction.

### EXTERNAL COLOR AND FINISHES

- Combination of aluminum composite panels, granite and clear glass glazing along the frontage of the building as per design.
- Remaining building surface finished with double coat water repellent colour and weather shield poly acrylic colour.

### WATER SUPPLY

- Supply of municipal water and /or auxiliary source of boring.

### ELECTRICITY SUPPLY

- Electricity supply by Torrent Power.
- Backup power for common area lighting, lifts, escalators and passages.

### ENTRANCE FOYER

- Voluminous entrance foyer with techno detailing.
- Well organized foyer equipped with nameplates.

### FLOOR LANDINGS STAIRCASE & TERRACE

- Premium quality granite & Italian natural stone flooring in plaza and passage.
- Finished with combination of matt & glossy natural stone in flooring & provision of decorative ceiling.
- Application of china mosaic at terrace area.
- All passages with Granamite tiles.

### ESCALATOR AND ELEVATOR

- Common auto door elevator of standard along with provision of separate power back up at the time of breakdown of electricity supply (gas operated generator).
- Escalator and elevator for easy and fast access to any floor.

### FIRE FIGHTING SYSTEM

- Fire fighting system as per G.D.C.R. norms.
- Digital integrated fire detection sensors with sprinklers in common area.





# CANOPUS

## GENERAL SECURITY

- Controlled entrance in the building.
- Provision of good and healthy details for self sustained security.
- E – Surveillance with motion recording, sunlight sensing lights.

## OFF TIME SECURITY

- CC TV surveillance in common areas with 30 days of recording facility at entrance foyer and ramp entrance.

## COMMUNICATION CONNECTIVITY

- Telephone and data cable line in each shop / office.

## PUBLIC TOILETS

- Well ventilated and designed common toilets.

## STANDARD SHOPS / OFFICE FINISHES

### SIGN BOARD

- Well detailed space for front sign board.
- Provision of electric point to each sign board as require.

### ROLLING SHUTTERS & WINDOWS

- G.I. channel rolling shutter with provision of safety details.
- All windows of hi grade anodized aluminum extruded sections and tinted glass.

### FLOORING

- Full body vitrified tiles.

### ELECTRIFICATION

- Electrification will be done by the multinational brand wires and switches.
- Power saver equipment and earth leakage protector will be provided by the developers.
- Sufficient load compatible Torrent Power meter connection.

### PLUMBING

- General water supply & drainage line connection to each shop and/or office.
- Plumbing & drainage system will be design & executed by the known consultants.

### WALL & CEILING FINISHES

- All walls finished with Birla white cement putty.

### AIR CONDITIONING

- Sufficient ducting space for the air conditioners.
- Defined a/c compressor unit placement with good accessibility.

Location Plan

