

Project by



An ISO 9001 : 2008 Certified Company

Corporate Office

Raghuvir House, Nariman Shopping, City Light, Surat

Cell: 096386 29131 | 0261 2225222 | 4022213

[www.raghuvirdevelopers.com](http://www.raghuvirdevelopers.com)

Architect:



Structural:

KEYSTONE CONSULTANTS

Vikas Patel

Follow us on



Raghuvir Developers & Builders



Raghuvir Developers

orchestrating a perfect life



RAGHUVIR

# Symphony





MAY THE HAPPINESS:

## THE ETERNAL SONG OF LIFE KEEP PLAYING...

Tune in to the world of happiness, comfort and style. Presenting Raghuvir Symphony - homes where joy will hum in the air. Made to make your life an eternally enchanting Journey, it will evoke a sense of belonging you longed for.









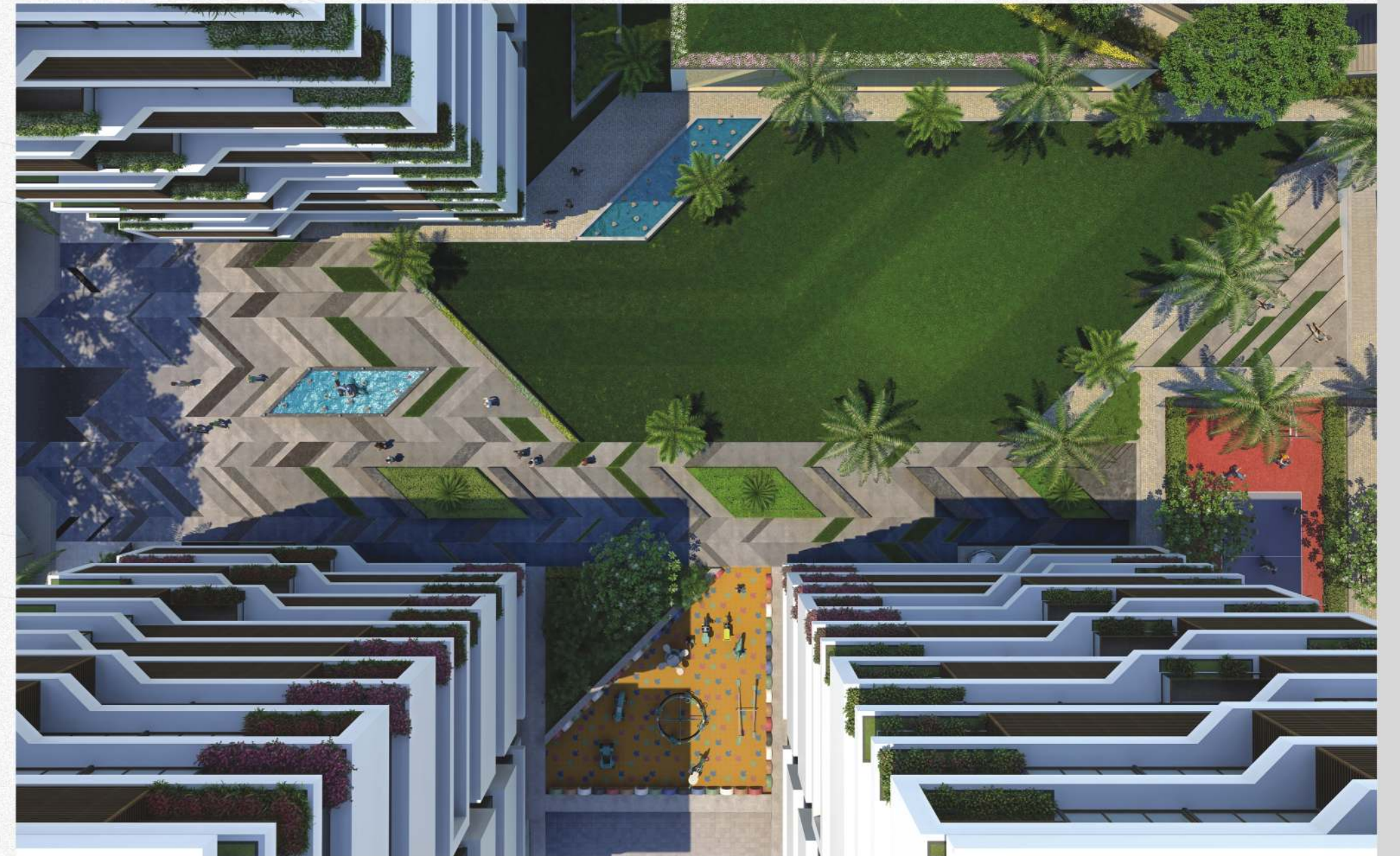
---

SKYLINE IS ABOUT TO  
**GET A BEAUTIFUL  
MAKEOVER...**

Spacious and wide settings, open and inviting landscape with aesthetically done architecture... together it creates a place worth spending your lifetime. Breathe in calmness and innermost peace as the pure air flowing at Raghuvir Symphony carries the music of lifelong contentment.

---





BEST OF EVERYTHING...

## FOR THE LIFE THAT LACKS NOTHING

Feel the cooling and classy ambiance of Raghuvir Symphony. Coz after looking at it, words will not be enough to describe.





CONVENIENCE WITHIN  
**YOUR REACH...  
TO BRING YOU JOY BEYOND LIMIT**

The life at Raghuvir Symphony will surely spoil you with its classy amenities and meticulously laid facilities. Bringing everything within your reach, now you will look for reasons to be pampered.





BREAK FREE FROM  
**HUMDRUMNESS... &  
BRING BACK THE ANIMATION**

The design, the architecture, the location and the rich landscape of Raghuvir Symphony take away dullness from your life as the place and the refreshing environs invites you to enjoy the zest of life.







BREAK FREE FROM  
**HUMDRUMNESS... &  
 BRING BACK THE ANIMATION**

The design, the architecture, the location and the rich landscape of Raghuvir Symphony take away dullness from your life as the place and the refreshing environs invites you to enjoy the zest of life.







ENTER IN TO  
**THE NEW WAY OF URBAN LIVING...**

The business of life calls for convenience and comfort that is prompt and easily accessible. Raghuvir Symphony takes you to the new age urban living where warmth of home blends with worldly leisure to create a lifestyle of perfect accord.







ENTER IN TO  
**THE NEW WAY OF URBAN LIVING...**

The business of life calls for convenience and comfort that is prompt and easily accessible. Raghuvir Symphony takes you to the new age urban living where warmth of home blends with worldly leisure to create a lifestyle of perfect accord.

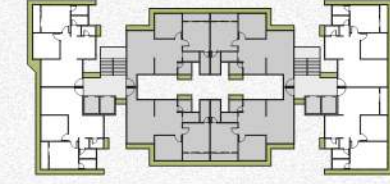
**2BHK**  
FLOOR PLAN

TOWER: C,D,E



**2BHK**  
FLOOR PLAN

TOWER: A,B





## LUXURIOUS EXCELLENT AMENITIES

### HUGE LUSH GREEN LANDSCAPED GARDEN

- The Central Garden has Party Lawn for Enjoying Birthdays, Marriages & Party Celebration.

Which includes:

- Gazebo for senior citizen.
- Glorious fountain sculpture.
- Jogging Track
- Beautiful children play area.
- Provision of unisex gymnasium hall.

### WELCOMING AREA

- High interior reception
- Guest waiting Lounge with unique coloured sofa and attachery
- Decent name plate
- C.C.T.V camera with 24 hours recording system for residents safety

### ALLOTTED PARKING

- Assured one car parking for each flat (on ground or in basement)

## UNIT SPECIFICATIONS

### FLOORING

- Vitrified granamite of 32"x32" in living room and 24"x24" granamite tiles in all other rooms including Kitchen & Dinning of standard company

### KITCHEN

- "L" shaped granite platform with S.S Sink
- Designer tiles up to lintel level
- Platform wash basin in common area with designer tiles over dedo

### REFLECTIVE GLASS

- Prerequisite of reflective glass in all windows for protection from heat

### BATHROOM

- Deluxe Bath fittings with single lever divertor by Aquel, Jaguar or equivalent brand
- Designer tiles up to lintel level over dedo & floor
- Wall hung closet with seat cover
- Wall hung wash basin

### WINDOWS

- Anodized aluminium section with reflective glass for heat protection
- Well polished granite sill
- Full height window in two bedrooms and hall

### DOOR

- Decorative pinewood main door with designer laminate along with handle and safety lock
- Waterproof pinewood flush doors with Sal wood Frame in house & hardware fittings

### ENAMEL

- Well finished putty on internal walls
- Texture on external wall of the building with acrylic water paint
- Acrylic colour in common areas

### ELECTRIFICATION

- Modular switches
- Concealed circuit wiring
- M.C.B in individual flat for safety
- Two way light & fan points in living room
- High ampere special electric points for electronic gadgets
- A.C points in master & children bedrooms
- Special point for T.V.

### PLUMBING

- I.S.I brand CPVC & UPVC plumbing & drainage piping
- Provision for central plumbing system for hot water (flat wise)

## CAMPUS FEATURES

### THREE SIDE OPEN FLAT

- Each flat is open from three sides
- Sufficient distance between two flats which gives privacy & full air circulation
- Each building have sufficient clear span which gives massive wind to each flat

### ENTRANCE GATE

- Elegant entrance gate on 60 fts wide T.P Road
- Security cabin
- Well designed & lighted project name shield

### LIFT

- Two high speed automatic elevators of Johnson or Trio (Otis) or equivalent company
- Lift with S.S cabin
- Intercom in lift cabin

### GENERATOR FACILITY

- Branded silent Generator with 6 Normal points in each flat & in common area for lift, Water pumps, Common passages & parking lights

### COMPOUND WALL

- Well designed compound wall around the Campus with decorative lights

### ANTI TERMITE TREATMENT

- Entire campus will be treated by pest Control treatment

### ROAD

- Well designed pavers block/RCC road

### WATER TANK

- Underground & Overhead water tank in each building

### TERRACE

- Special thickness & high grade for terrace slab with water proofing.

## SAFE HEAVEN HOMES

### TITLE

- Loanable clear title
- Registered sale deed for individual members
- Building Use Certificate
- Airport N.O.C
- Lift Licence
- Fire N.O.C
- Environmental clearance

### CONSTRUCTION QUALITY

- Construction work maintaining high standards in quality and preciseness in building construction through qualified and dedicated team.

### STRUCTURAL DESIGN

- Considering last earth quake.

### FIRE SAFETY

- Fire safety provision as per authority norms.

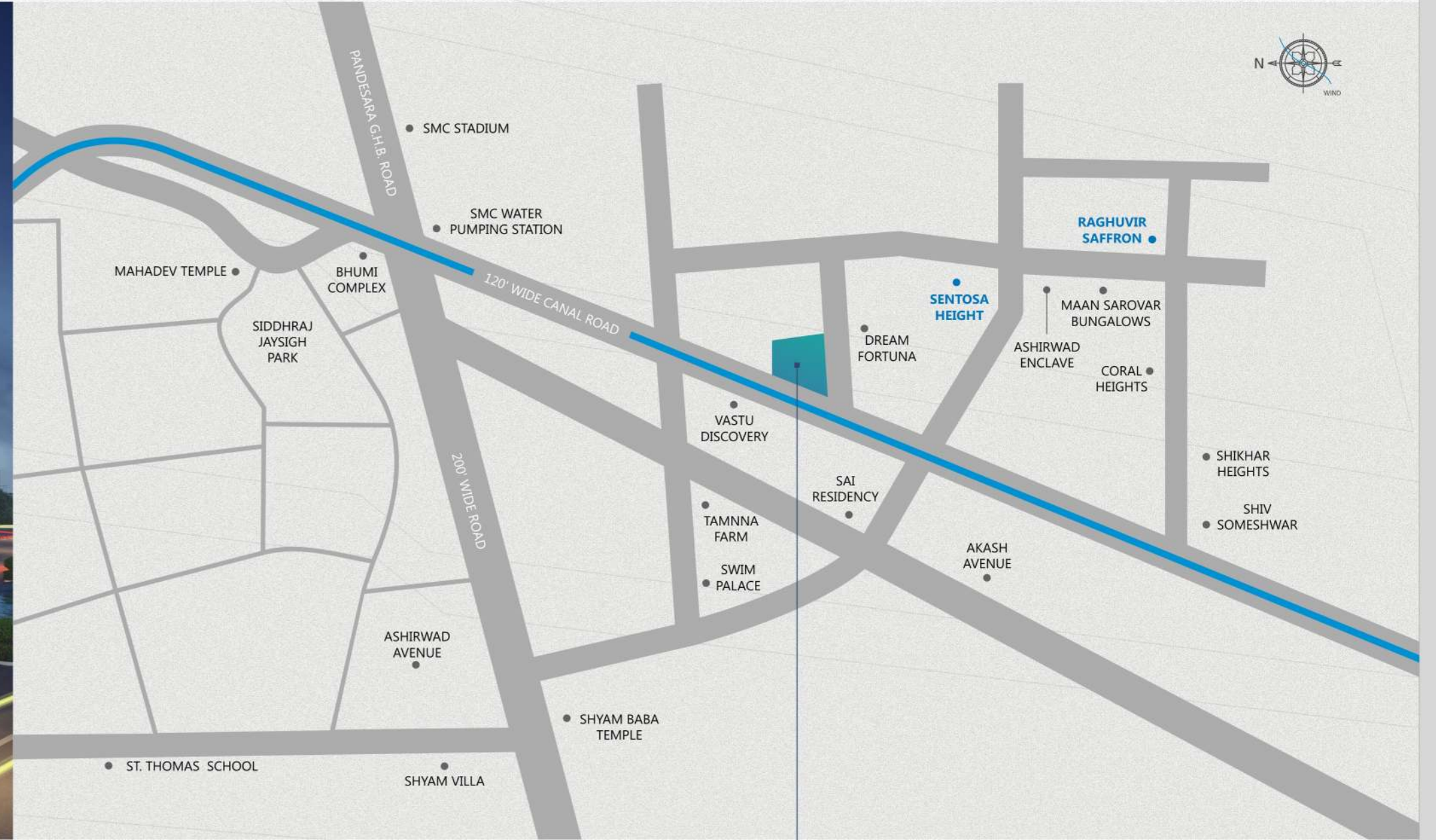
## GREEN BUILDING CONCEPT

- Tree plantation in campus.
- Tree plantation & landscaping outside the compound wall
- Percolating borewell for recharge of rain water
- Building design which gives maximum cross ventilation & air circulation to reduce electric consumption.
- Reflective glass in each window for protection from heat, which reduces electric consumption of A.C.



# HARMONY OF NATURE & PLEASURE...

An apt gift for your family for forever to treasure!



**Disclaimer**

• Any amendments in rules & regulation by any authority will be bound to all members • All expenses of legal document, G.E.B charges, extra stamp duty(if any), service tax, VAT(if applicable) society maintenance, SMC tax and any other expenditure like safety grill, gas connection will be borne by members • External & internal changes shall not be allowed in any case • Before possession, execution of sale deed is compulsory • Members are bound to pay instalments regularly & irregularity in payment may cause cancellation of booking • Parking allotment done by builder will be bound to all members • Developers Reserves all rights to make any changes in the project including Technical Specifications, designs, Planning, Amenities, layout and all members shall abide by such changes and this brochure is intended only for easy display and information of the project and Shall does not form any part of the legal document.



Site Address:  
Opp. Vastu Discovery,  
Althan-Canal Road,  
Althan, Surat