

Project by



An ISO 9001 : 2008 Certified Company





A unique concept for the niche business persons. **RAGHUVIR TRADE CENTER** offers the required exclusivity that a speciality store like a High Fashion Boutique, Textile Houses and Offices what you would be looking for.

Modern retail is a multi-dimensional business function. The location, the suitability, the feel, the facilities....and a lot more, are crucial consideration parameters. It is even more significant if your business requires a distinct positioning. RAGHUVIR TRADE CENTER meets all those parameters and will definitely take your business to the next level.

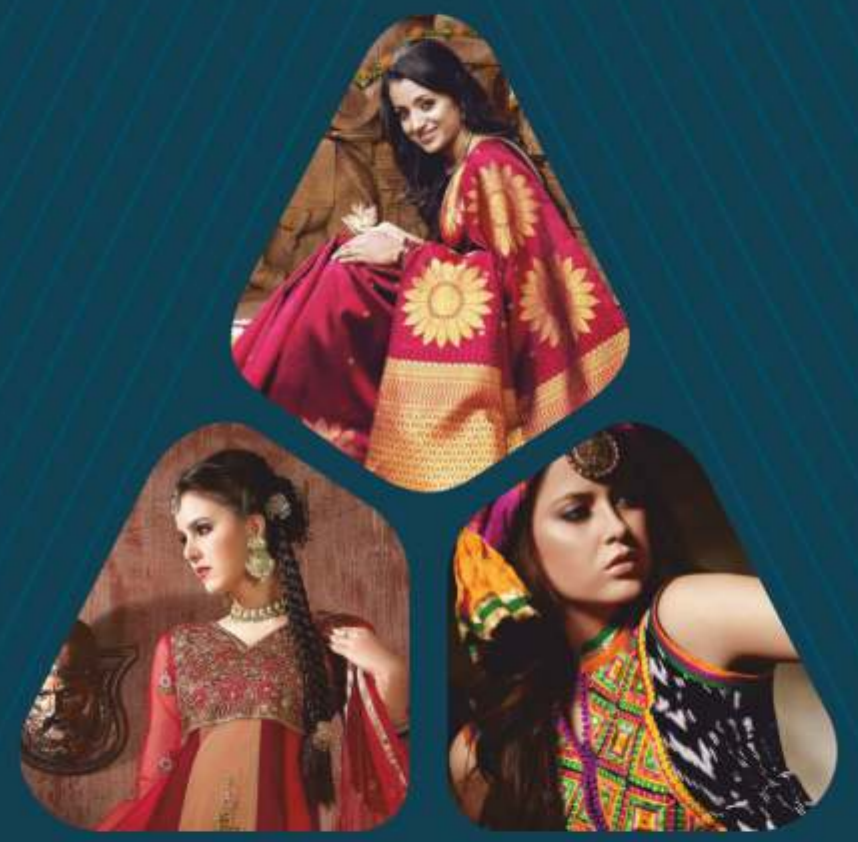
MAKE  
A LASTING IMPRESSION





A SPECTACULAR  
PROPERTY WHERE  
ATTENTION HAS BEEN  
GIVEN TO EVERY DETAIL

IT IS NEVER ENOUGH TO SIMPLY "BUILD." WE SEEK TO EVOLVE WITH EVERY NEW PROJECT. WITH **RAGHUVIR TRADE CENTER** IN PARTICULAR, WE LOOKED TO SHOW THE FULLNESS OF WHAT IS POSSIBLE WHEN IMAGINATION, INNOVATION, AND INTELLIGENCE COEXIST WITH ONE ANOTHER



24x7 Security



CCTV Camera



24x7 Power Backup





RAGHUVIR  
**TRADE CENTER**  
NEW DESTINATION FOR TEXTILE HOUSES



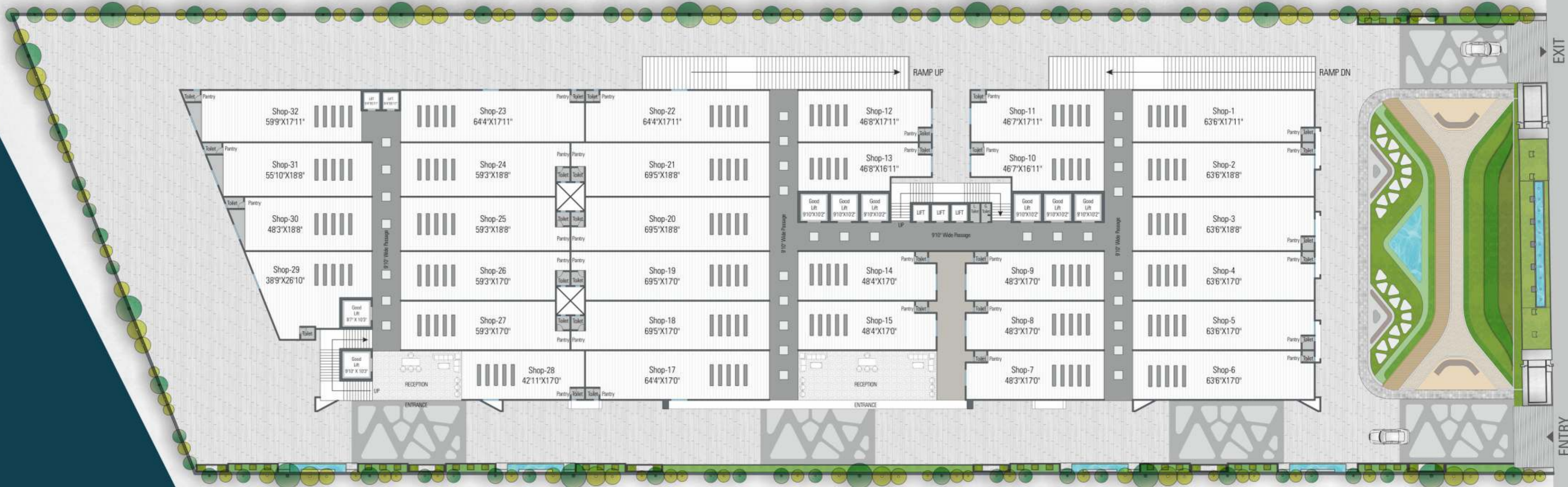
A PERFECT  
COMBINATION  
OF CONVENIENCE,  
COMFORT AND CLASS



IMPECCABLE  
TEXTILE  
BUSINESS  
HOUSE.



# GROUND FLOOR PLAN



## AREA TABEL

### GROUND FLOOR PLAN

Textile House	Carpet Area (Sq. Ft.)
G-1	1139
G-2 to G-3	1184.5
G-4 to G-6	1078.5
G-7 to G-9	807
G-10	714
G-11	835.5
G-12	836.5
G-13	714.5
G-14 to G-15	808
G-17	1092.5
G-18 to G-19	1153
G-20 to G-21	1269
G-22	1153
G-23	1151.5
G-24 to G-25	1079
G-26 to G-27	980
G-28	728.5
G-29	976
G-30	901
G-31	1042.5
G-32	1069

EXIT

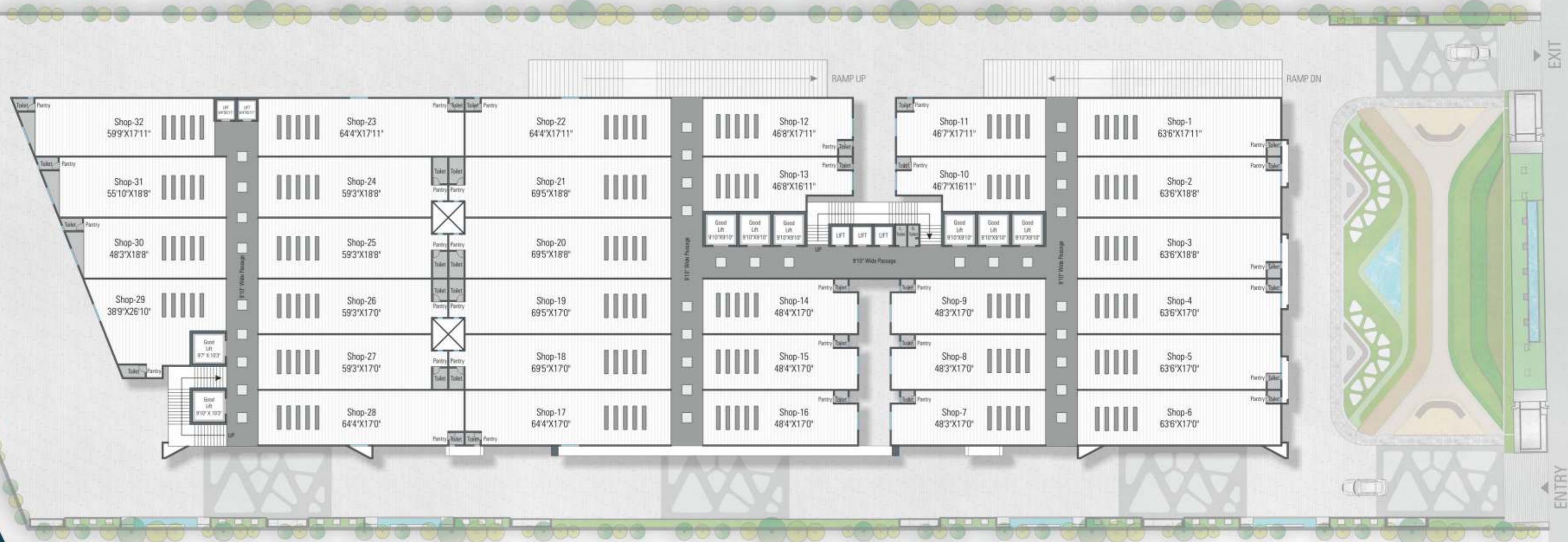
ENTRY

≈ 18.0 mt Wide T.P. Road





# UPPER GROUND 1<sup>ST</sup> TO 7<sup>TH</sup> FLOOR PLAN



≈ 18.0 mt Wide T.P. Road

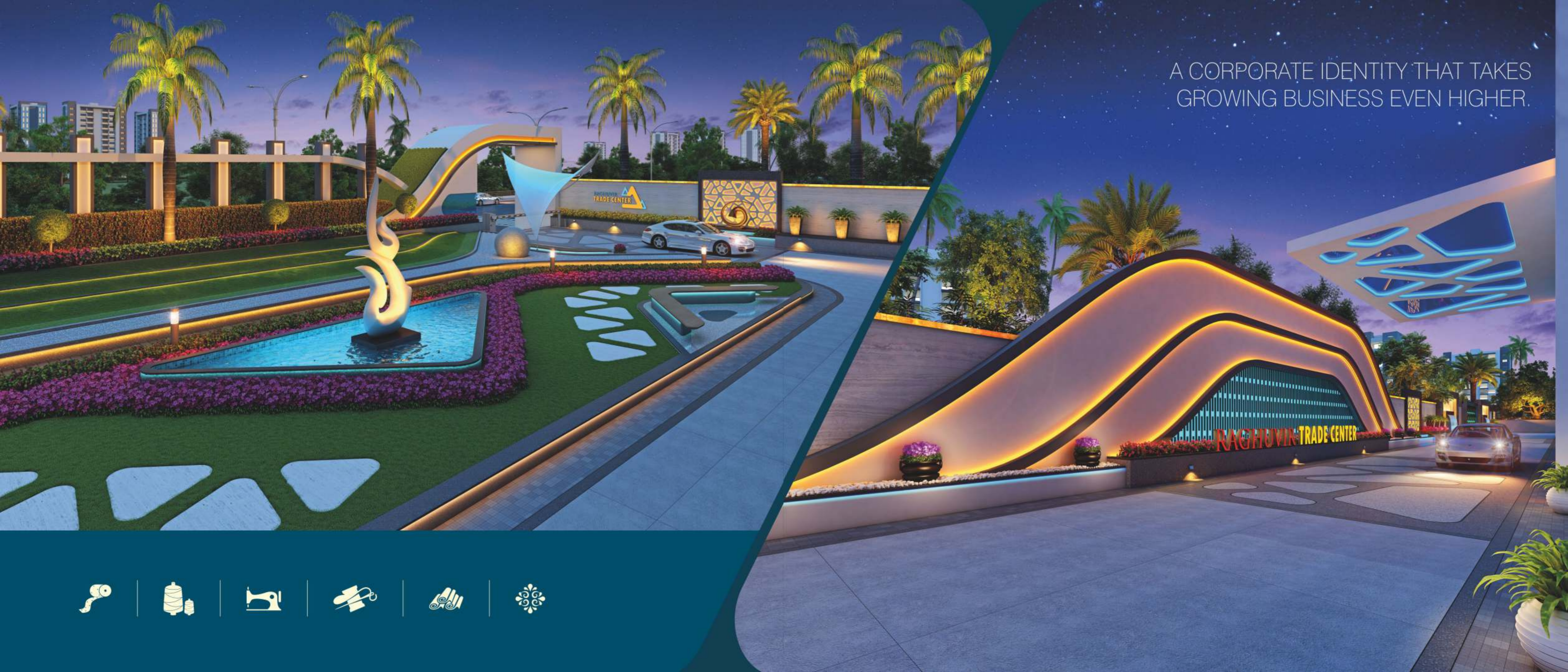
## AREA TABEL

UPPER GROUND, 1 <sup>ST</sup> TO 7 <sup>TH</sup> FLOOR PLAN	
Textile House	Carpet Area (Sq. Ft.)
UG-1	1139
UG-2 to UG-3	1184.5
UG-4 to UG-6	1078.5
UG-7 to UG-9	807
UG-10	714
UG-11	835.5
UG-12	836.5
UG-13	714.5
UG-14 to UG-16	808
UG-17	1092.5
UG-18 to UG-19	1153
UG-20 to UG-21	1269
UG-22	1153
UG-23	1151.5
UG-24 to UG-25	1079
UG-26 to UG-27	980
UG-28	1092.5
UG-29	976
UG-30	901
UG-31	1042.5
UG-32	1069



RAGHUVIR  
**TRADE CENTER**  
NEW DESTINATION FOR TEXTILE HOUSES

RAGHUVIR TRADE CENTER



A CORPORATE IDENTITY THAT TAKES  
GROWING BUSINESS EVEN HIGHER.



## AMENITIES

### GOOD'S ELEVATORS

- 8 Goods Elevators of 1.50 tonnes capacity of TRIO company or equivalent brand

### PASSENGER ELEVATOR

- 5 Automatic Elevators with S.S. cabin of 10 passengers capacity of TRIO company or equivalent brand

### INTERCOM

- Intercom facility for communication between two shops.

## SECURE STRUCTURE

### TITLE

- Loanable clear title.
- Registered sale deed for individual members.
- Building Use Certificate.
- Airport N.O.C.
- Lift Licence.
- Fire N.O.C.
- Environmental Clearance Certificate.

## SALIENT FEATURE

### FLOORING

- Each house will have vitrified tiles flooring.

### HOUSE SHUTTER

- Automatic remote operated rolling shutter.

### WINDOWS

- Anodized / Powder coated aluminium section.
- Polished granite sill.
- Glass in windows.

### PLUMBING

- I.S.I brand CPVC & UPVC plumbing & drainage piping.

### ENTRANCE GATE. ROAD & COMPOUND

- Gorgeous entrance gate on 60 FT. wide T.P. road.
- Paver Block/Trimix RCC road.

### AMPLE PARKING

- Ground and double basement parking facilities.

### HIGH SECURITY

- Entire campus - passage will be covered by 20 C.C.T.V. Camera.

### FIRE SAFETY

- Fire safety provision.

### WATER SUPPLY

- Underground and overhead tanks provided for constant water supply.

### WASHROOM FACILITIES

- Attached Toilets for each textile house in addition to common toilet facility on each floor.

### SANITARY

- Sanitary ware of CERA or SIMPOLO or Equivalent brand.

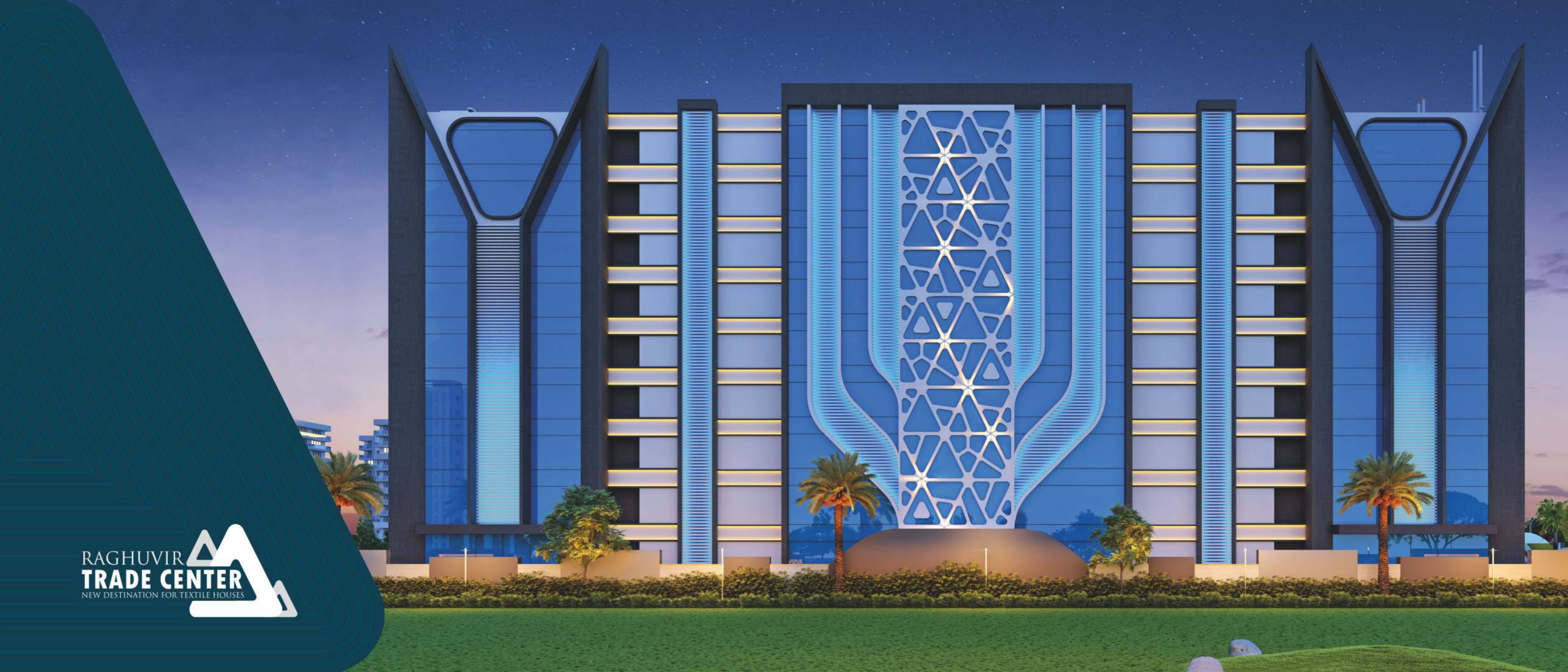
### ELECTRIFICATION

- Modular switches.
- Concealed circuit wiring.
- 20 electric points in each units including fan point, light point, plug point etc.
- M. C. B. in individual house for safety.

### PEST CONTROL

- The building would be treated with an anti termite in foundation of building as an added measure.





RAGHUVIR  
**TRADE CENTER**  
NEW DESTINATION FOR TEXTILE HOUSES





## KEY PLAN



### Site Address

Raghuvir Trade Center, Opp. Landmark Empires, Parvat Patia, Kadodara Main Road, Surat.

### Project by



An ISO 9001 : 2008 Certified Company

### Corporate Office

Raghuvir House, Nariman Shopping,  
City Light, Surat.  
Cell : 096386 29131 | 099250 29912  
www.raghuvirdevelopers.com  
email : info@raghuvirdevelopers.com

### Follow us on



### RERA Registration Number

PR/GJ/SURAT/SURAT CITY/SUDA/CAA00089/070917

### Download Now



### Disclaimer:

• Any amendments in rules & regulations by any authority will be bound to all members. • All expenses of legal document, extra stamp duty (if any), GST, Service Tax, Society maintenance, Safety Grill, Incidental charges (drainage, water supply, IC, etc.), SMC tax and Electric connection (GEB charges, cabling & it's labour charge and other related expense) will be borne by members. • External & Internal changes shall not be allowed. • Before possession, execution of sale deed is compulsory. • Members are bound to pay installments regularly & irregularity in payment may cause cancellation of booking. • Developers reserves right of making any changes in the scheme & it shall be bound to all members. • This booklet is only for private circulation and for general informations to the members & shall not form a part of any agreement. • It can be changed without prior notice. • There may be difference in previous and recent brochure in manner of matter and content part, in that cases recent brochure should be considered. • The interior design/furniture work shown in the brochure is just for the purpose of presentation/explanation to the members. It is not part of the standard specification, as unit is sold without internal furniture.