



### TULIP RESIDENCY

Tulip Residency, Opp. VR Mall, Near Om Raj, Vesu, Surat - 395007.

M: +91 9726002916, +91 7984255601

PR/GJ/SURAT/SURAT CITY/SUDA/RAA10189/130522

 Tulip.paccific@gmail.com | Follow us   







" Give attention to the Details  
and Excellence will follow ..."





## SPECIFICATIONS



### PARKING & INTERNAL ROADS

- 2 car parking allotted per flat.
- Speed breaker and safety signage.



### SECURITY SYSTEM

- 24 x 7 security within the campus & intercom facilities.



### ELEVATORS

- 1 passenger lift & 1 goods lift.



### POWER

- Dg backup for elevators, water pumps & lighting in common area.
- 3 lights & 3 fans point for each flat.



### BATHROOM SANITARY FITTINGS / C. P FITTINGS

- Wall hung closet with seat cover in attached toilet.
- Bath fittings.



### WINDOWS

- Aluminium powder coated with reflective glass of high quality.



### ELECTRIFICATION SYSTEM

- Distribution board with "mcb " & "rccb" to ensure maximum safety.
- Modular switches.
- Frlsh cables.
- Appropriated earthing & lighting protection.



### WATER SUPPLY

- Underground and Overhead water tank.
- Concealed lines with cpvc pipe.



### FLOORING & DADO TILES

- Living kitchen, dining & passage area finished with Italian finished tiles.
- Master bedroom to be provided with wooden flooring & other bedrooms with vitrified tiles.
- All bathroom finished with vitrified tiles.
- All balcony floor finished by wooden ceramic flooring.



### DOOR & RAILING

- Main door & Internal doors to be provided with flush door.
- All balcony with glass railing.
- Staircase with ss railing.



### INTERNAL COMMON AREA FINISHES

- Stair steps and landing in granite stone flooring.
- Passage finished with vitrified tiles.



- |                   |                            |                               |
|-------------------|----------------------------|-------------------------------|
| 1 - Reception     | 7 - Movie Theatre          | 13 - Landscape Garden         |
| 2 - Gym           | 8 - Passenger / Goods Lift | 14 - Multi-Sports Court       |
| 3 - Massage Room  | 9 - Passenger Lift         | 15 - Children's Play Area     |
| 4 - Steam / Sauna | 10 - Bus Pick-Up           | 16 - D.G Set                  |
| 5 - Jacuzzi       | 11 - Jogging Track         | 17 - Space for Temple         |
| 6 - Indoor Games  | 12 - Gazebo                | 18 - Plaza for Senior Citizen |

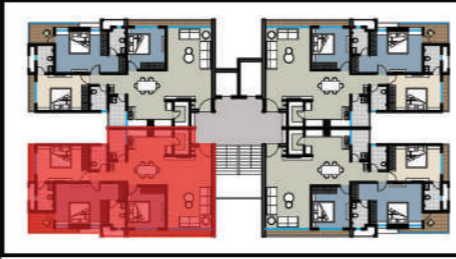
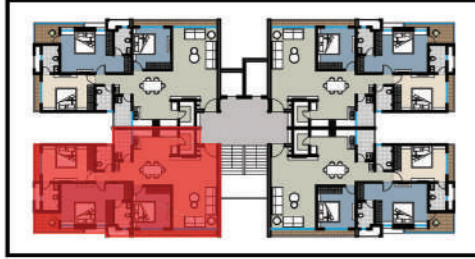


**GROUND FLOOR PLAN (AMENITIES)**

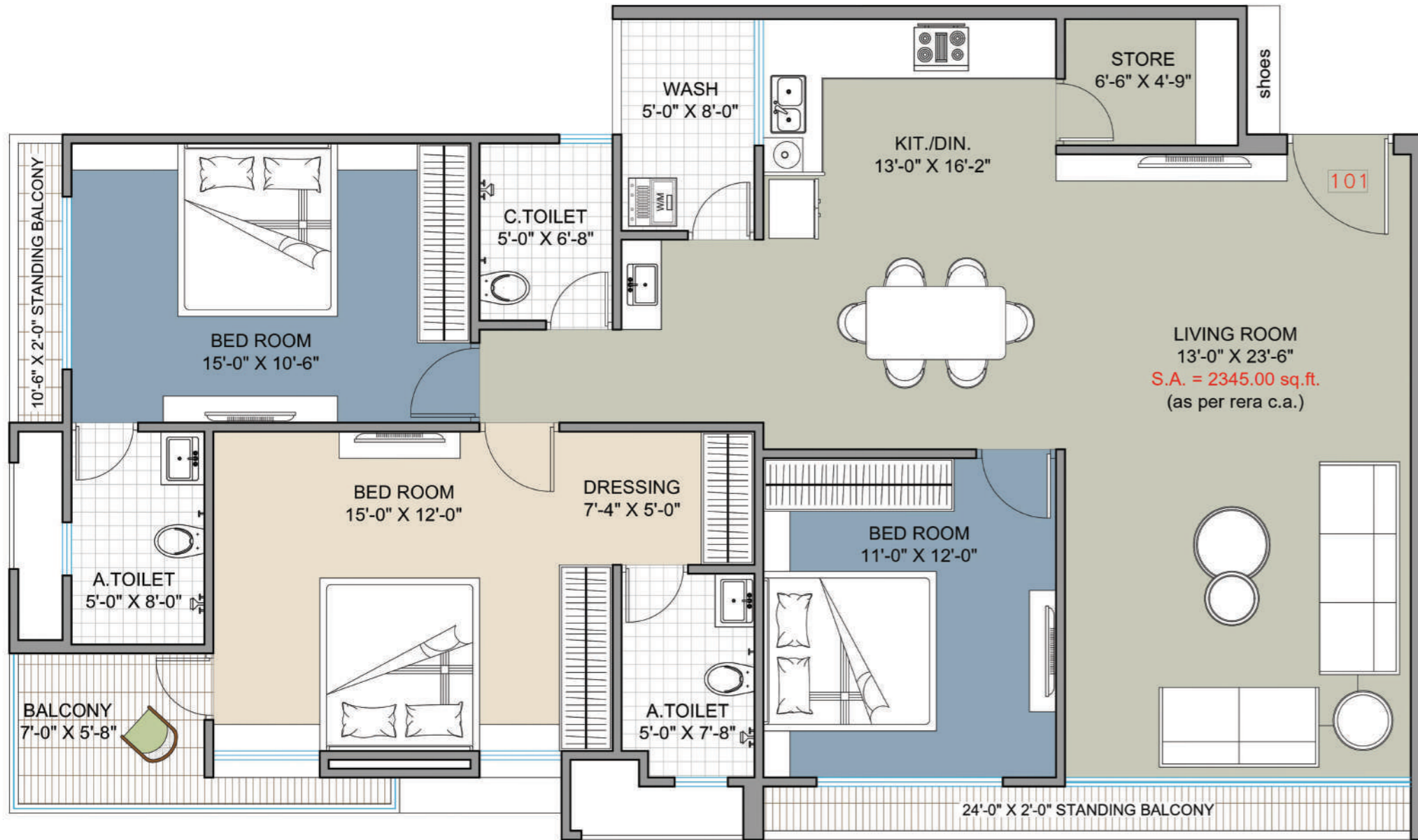


**TYPICAL FLOOR PLAN (1st to 9th Floor)**

3BHK UNIT PLAN (1st to 9th Floor)



ISOMETRIC VIEW





RECEPTION (FOYER)



MULTI-SPORTS COURT



OUTDOOR CHILDREN PLAY AREA



LIVING ROOM (11' HEIGHT)





DINING SPACE



KITCHEN



KING SIZE MASTER BEDROOM

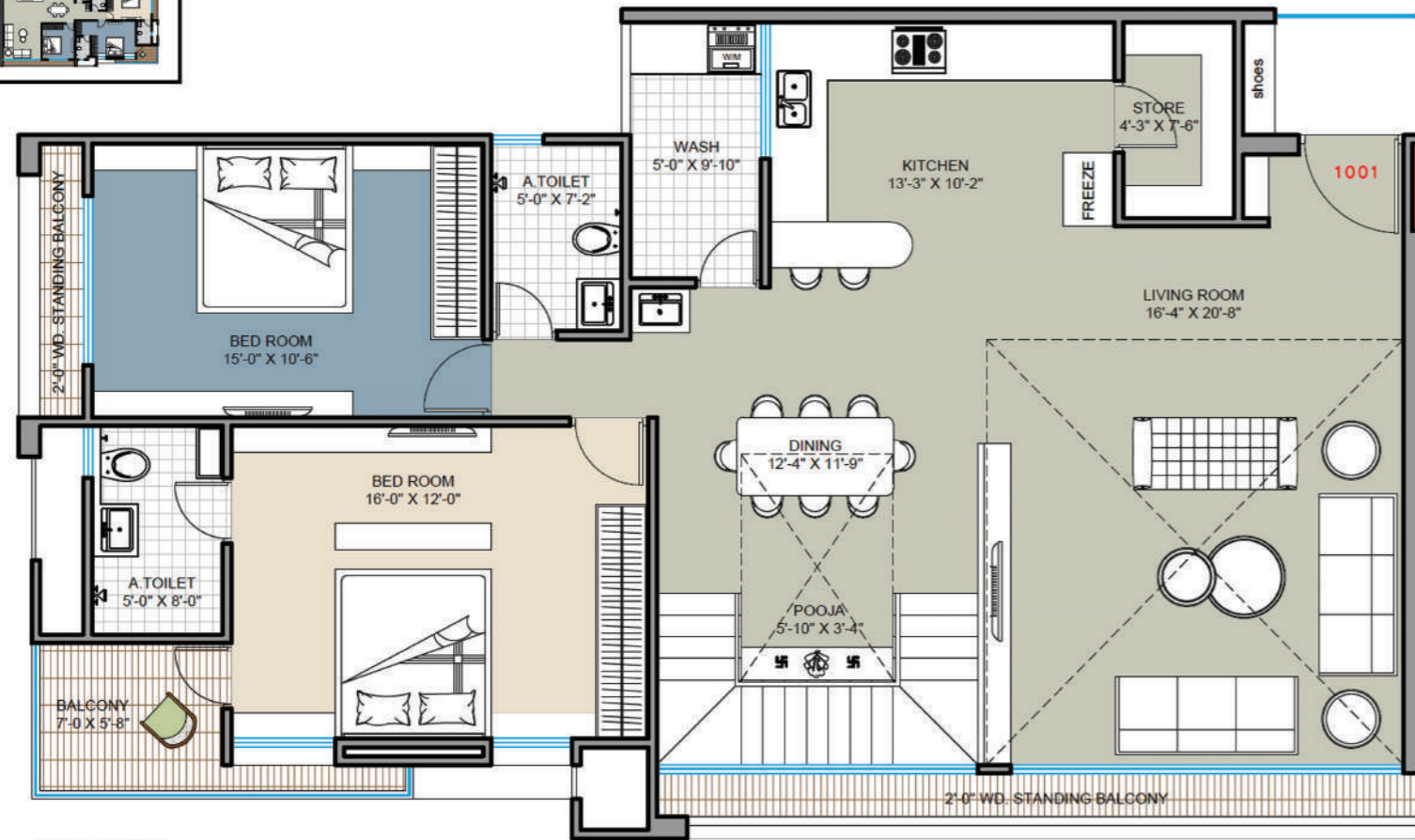
QUEEN SIZE MASTER BEDROOM



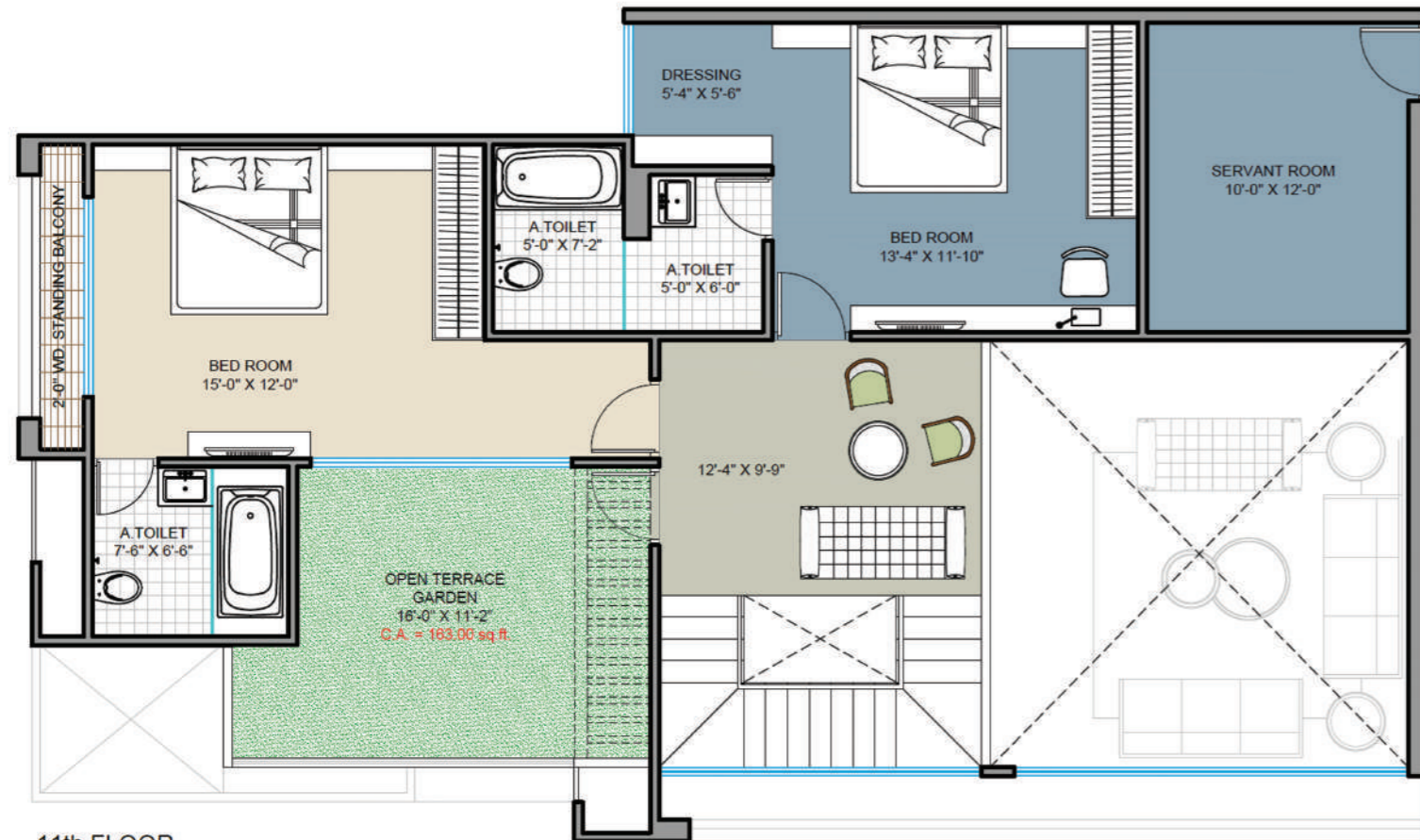
GUEST BEDROOM



# PENT HOUSE (4 BHK)



10th FLOOR



11th FLOOR



LIVING ROOM (22' HEIGHT)



LIVING ROOM (22' HEIGHT)

## LOCATION MAP



### STRATEGIC LOCATION

- 4.3 km from Surat Airport
- 800 m from Petrol Pump
- 550 m from Hospital
- 900 m from V R mall
- 750 m from BRTS Bus Stop
- 2.3 km from Ryan International School
- 3 km from College/University (VNSGU)
- 6.6 km from Diamond Bourse
- 1.4 km from NH 53



PR/GJ/SURAT/SURAT CITY/SUDA/RAA10189/130522  
[www.gujrera.gujarat.gov.in](http://www.gujrera.gujarat.gov.in)



### DISCLAIMER

(1) All rights are reserved by the developers. (2) Legal charges, stamp duties, registration charges, G.E.B, S.M.C., SUDA & gas connection charges etc. to be borne by the member. (3) Rights reserved by the developers to make any changes in plan, elevation and other details which will be binding to all the members. (4) Internal and external changes shall not be allowed. (5) Subject to Surat jurisdiction. (6) Any new taxes announced by the government/S.M.C. / Authority will be borne by the member / buyer during the project. (7) This information book is the property of developers. It cannot be used as a legal document or reproduce without their permission. (8) Changes in services of individual units will not be permissible. (9) Any external signages for offices shall not be permitted for all the time to come. (10) This brochure is only for private circulation for general information to the members and shall not form a part of any agreement. It can be changed without prior notice.