



# AVADH MENORCA

45M WIDE PROPOSED ROAD



BIN CENTRE

18M WIDE PROPOSED ROAD

45M WIDE PROPOSED ROAD



BUA - 4518 SQ.FT  
RCA - 3095 SQ.FT

BUA - 4506 SQ.FT  
RCA - 3028 SQ.FT

BUA - 4782 SQ.FT  
RCA - 3736 SQ.FT

BUA - 4978 SQ.FT  
RCA - 3892 SQ.FT

BUA - 7701 SQ.FT  
RCA - 4235 SQ.FT

BUA - 7798 SQ.FT  
RCA - 4255 SQ.FT

BUA - 7701 SQ.FT  
RCA - 4235 SQ.FT

BUA - 6719 SQ.FT  
RCA - 3787 SQ.FT

BUA - 6907 SQ.FT  
RCA - 3759 SQ.FT

BUA - 3786 SQ.FT  
RCA - 2611 SQ.FT

BUA - 3809 SQ.FT  
RCA - 2599 SQ.FT

BUA - 4034 SQ.FT  
RCA - 3088 SQ.FT

BUA - 4026 SQ.FT  
RCA - 2758 SQ.FT

BUA - 5438 SQ.FT  
RCA - 2980 SQ.FT

BUA - 4479 SQ.FT  
RCA - 3014 SQ.FT

BUA - 7761 SQ.FT  
RCA - 4269 SQ.FT

BUA - 7746 SQ.FT  
RCA - 4259 SQ.FT

BUA - 7763 SQ.FT  
RCA - 4269 SQ.FT

BUA - 7748 SQ.FT  
RCA - 4259 SQ.FT

BUA - 5886 SQ.FT  
RCA - 3294 SQ.FT

BUA - 5668 SQ.FT  
RCA - 3115 SQ.FT

18.00 MT WIDE PROPOSED ROAD



- |                          |                 |                  |                 |                    |                        |                         |                   |                    |
|--------------------------|-----------------|------------------|-----------------|--------------------|------------------------|-------------------------|-------------------|--------------------|
| BANQUET LAWN 33          | POOL DECK 29    | CENTRAL PLAZA 25 | BOX CRICKET 21  | THEATRE 17         | YOGA ROOM 13           | RECEPTION LOBBY 9       | FEATURE BRIDGE 5  | ENTRANCE GATEWAY 1 |
| PARTY LAWN 34            | FEATURE WALL 30 | 50M LAP POOL 26  | KIDS' POOL 22   | FOREST LAWN 18     | INDOOR GAMES CENTRE 14 | STONE LANTERN GARDEN 10 | ALFRESCO DINING 6 | INCLINED PLANTER 2 |
| JAIN TEMPLE 35           | SKATING RING 31 | CHANGING ROOM 27 | PLAY MEADOW 23  | AMPHITHEATRE 19    | LANDSCAPE STAIRS 15    | HINDU TEMPLE 11         | CAFE/KITCHEN 7    | FEATURE SCREENS 3  |
| JOGGING/CYCLING TRACK 36 | BANQUET HALL 32 | GYM 28           | TENNIS COURT 24 | SENIORS' GARDEN 20 | BOWLING 16             | YOGA LAWN 12            | ARRIVAL LOBBY 8   | WATER FEATURE 4    |

45M WIDE PROPOSED ROAD



18M WIDE PROPOSED ROAD

- |                |   |                 |   |
|----------------|---|-----------------|---|
| BBQ PAVILLION  | 5 | ENTRANCE CANOPY | 1 |
| ACTIVITY GREEN | 6 | FEATURE BRIDGE  | 2 |
| SKYLIGHT       | 7 | GATHERING PLAZA | 3 |
| TRELLIS        | 8 | PLAY NET        | 4 |



**Tower - A (1<sup>st</sup>, 4<sup>th</sup>, 9<sup>th</sup>, 12<sup>th</sup> Floor)**

BUA -7184 SQ.FT  
RCA -3951 SQ.FT



**RCA - 3889 SQ.FT  
SA - 7070 SQ.FT**

**RCA - 3951 SQ.FT  
SA - 7184 SQ.FT**

**101**

**102**



FB

FB

**Tower - A (2<sup>nd</sup>, 3<sup>rd</sup>, 5<sup>th</sup>, 6<sup>th</sup>, 7<sup>th</sup>, 8<sup>th</sup>, 10<sup>th</sup>, 11<sup>th</sup>, 13<sup>th</sup>, 14<sup>th</sup>, 15<sup>th</sup> Floor)**



**RCA - 3737 SQ.FT  
SA - 6794 SQ.FT**

**RCA - 3799 SQ.FT  
SA - 6907 SQ.FT**

**102**

**101**

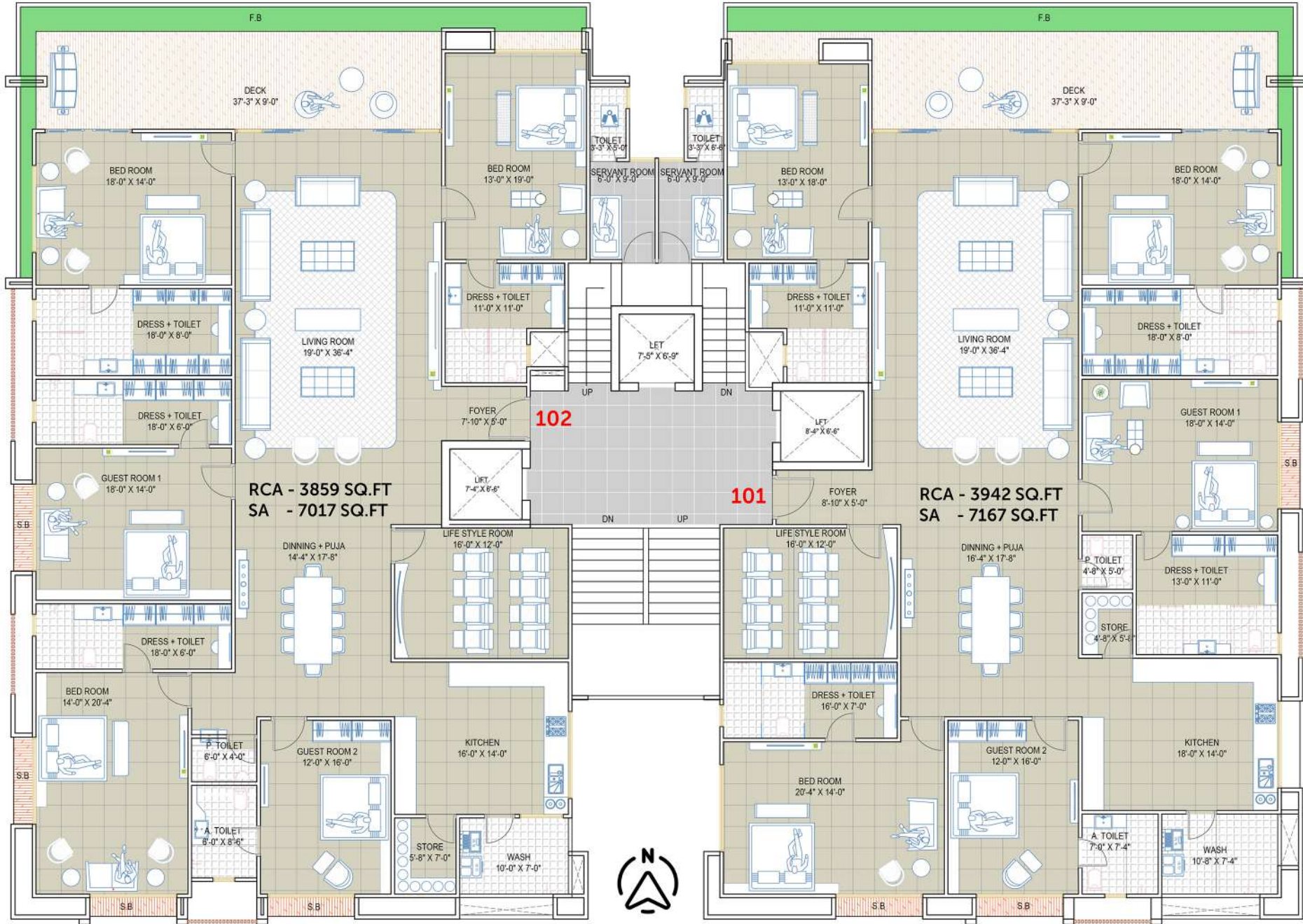


# Tower - B (1<sup>st</sup> to 14<sup>th</sup> Floor)





# Tower - C (1<sup>st</sup>, 4<sup>th</sup>, 9<sup>th</sup>, 12<sup>th</sup> Floor)



**RCA - 3859 SQ.FT**  
**SA - 7017 SQ.FT**

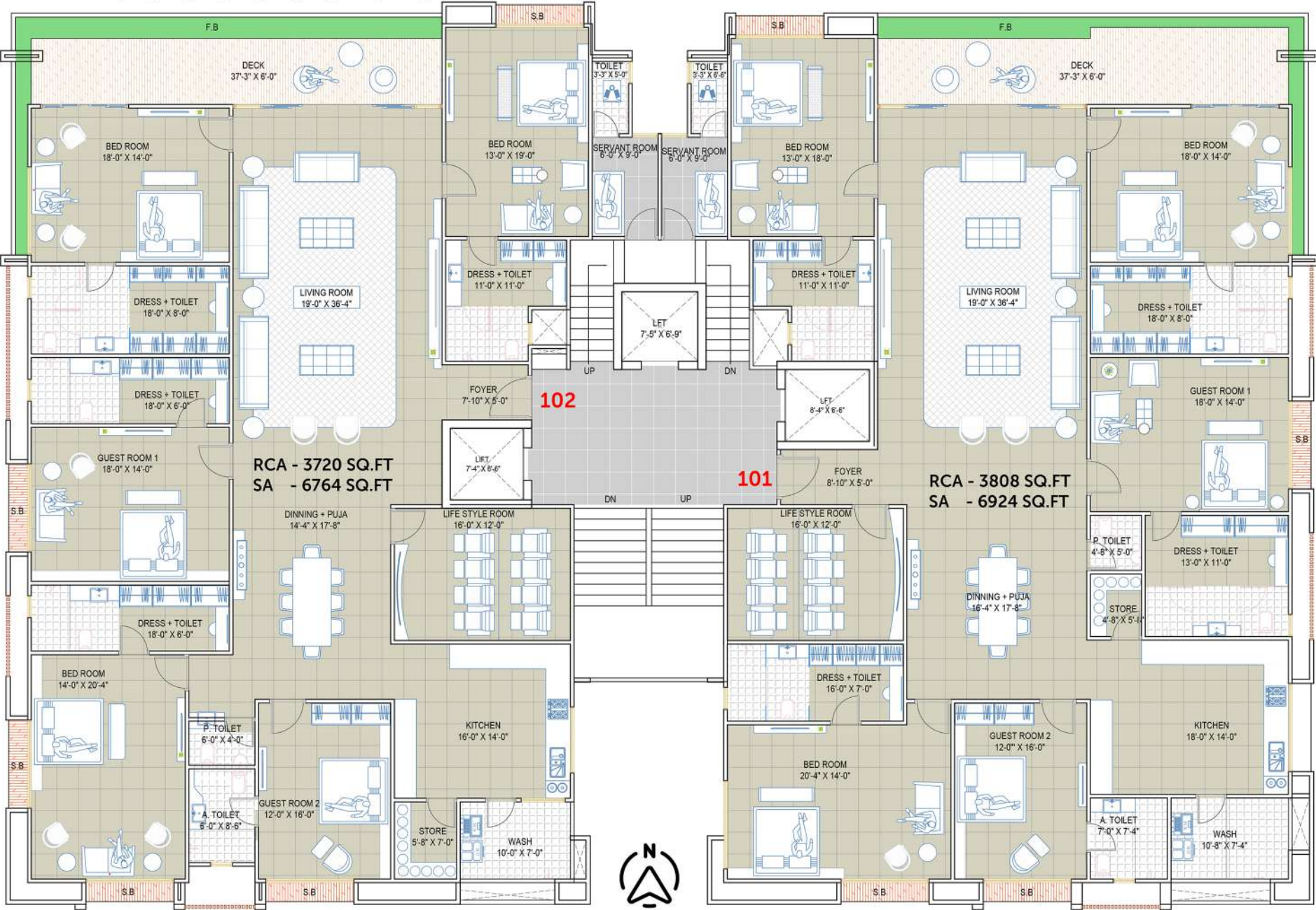
**102**

**101**

**RCA - 3942 SQ.FT**  
**SA - 7167 SQ.FT**



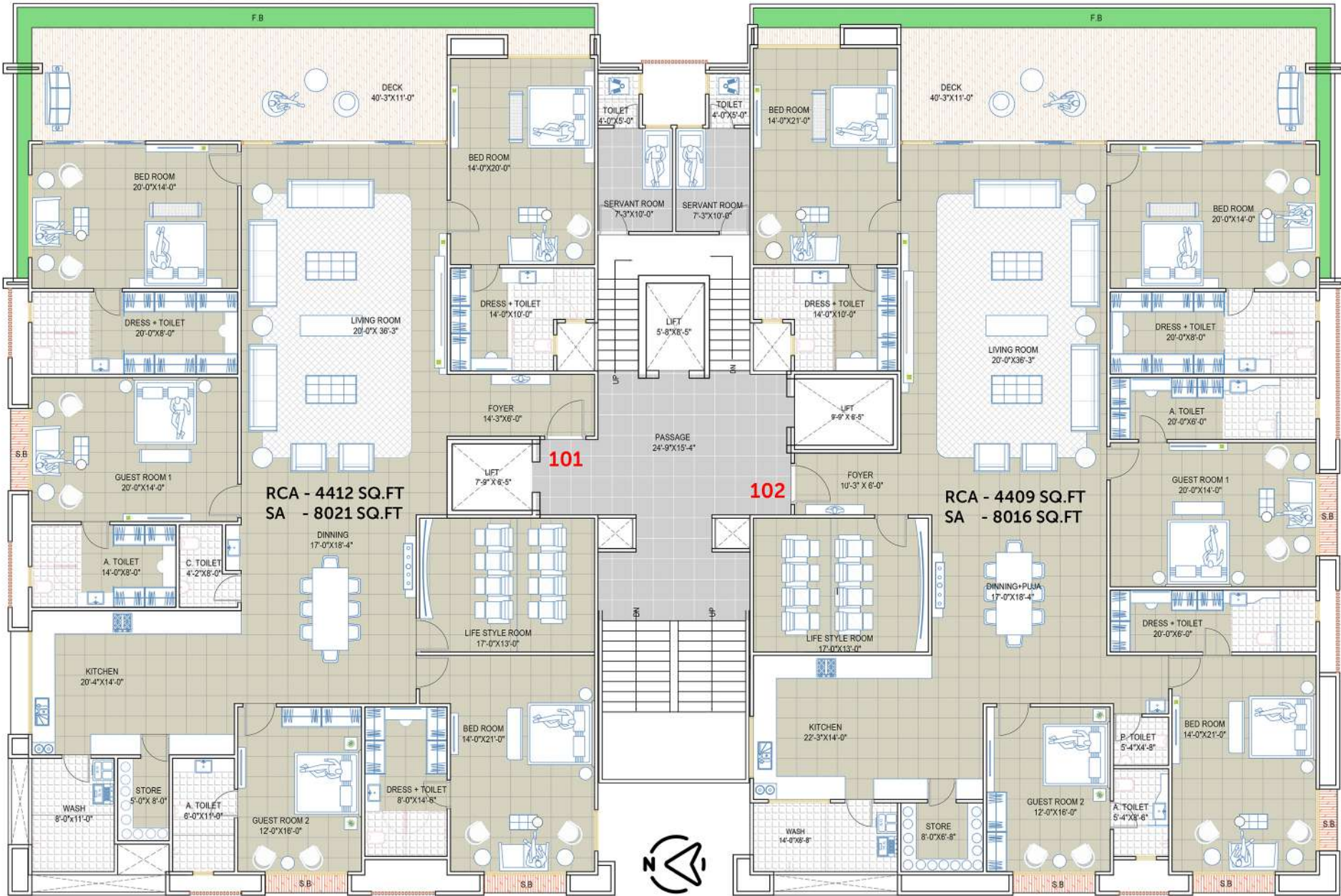
**Tower - C (2<sup>nd</sup>, 3<sup>rd</sup>, 5<sup>th</sup>, 6<sup>th</sup>, 7<sup>th</sup>, 8<sup>th</sup>, 10<sup>th</sup>, 11<sup>th</sup>, 13<sup>th</sup>, 14<sup>th</sup> Floor)**



**Tower - D (1<sup>st</sup> to 13<sup>th</sup> Floor)**

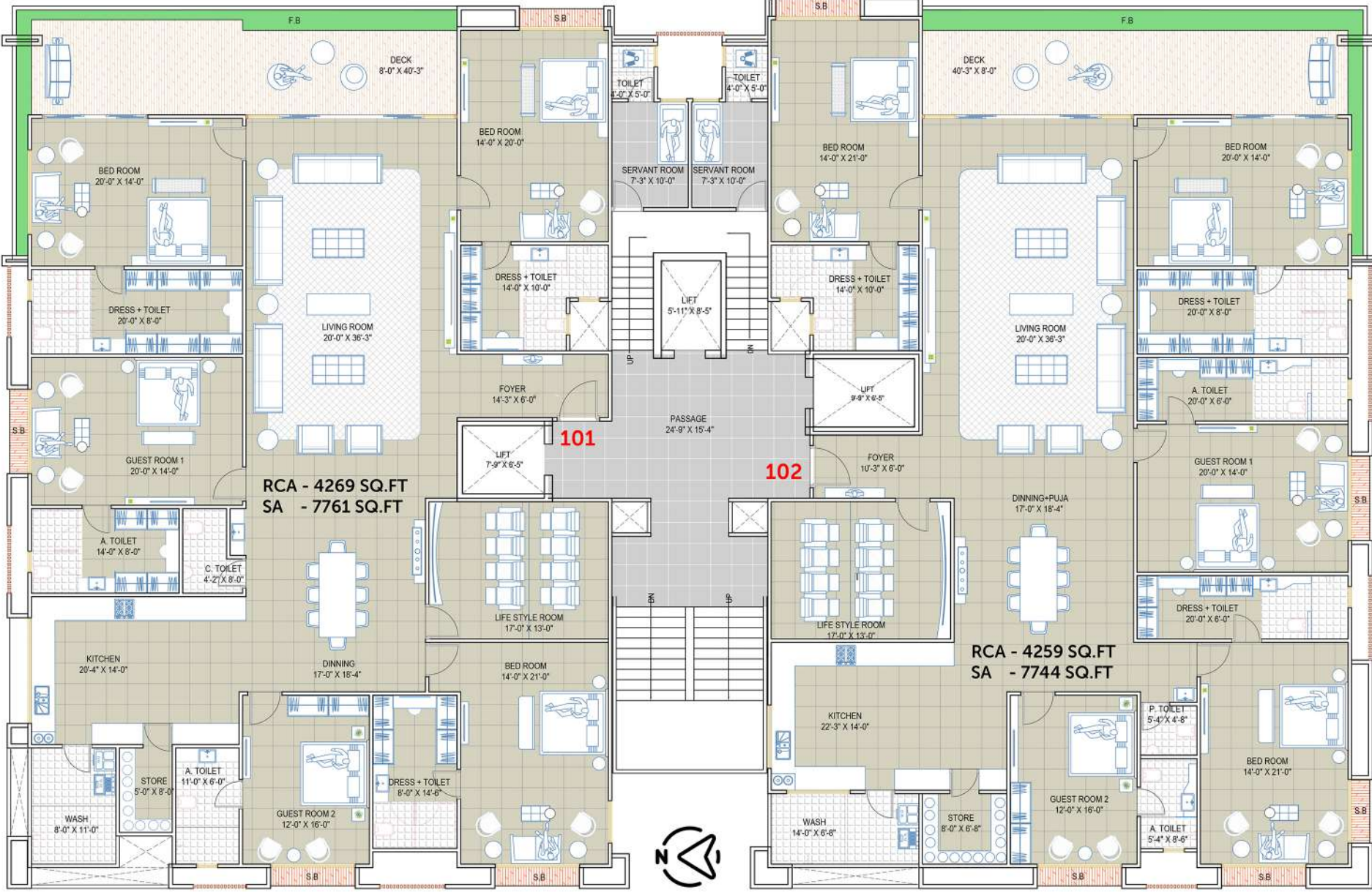


# Tower - E & F (1st, 4th, 9th, 12th Floor)



**Tower - E & F (2<sup>nd</sup>, 3<sup>rd</sup>, 5<sup>th</sup>, 6<sup>th</sup>, 7<sup>th</sup>, 8<sup>th</sup>, 10<sup>th</sup>, 11<sup>th</sup>, 13<sup>th</sup> Floor)**

**Tower - F (14<sup>th</sup> Floor)**



**RCA - 4269 SQ.FT**  
**SA - 7761 SQ.FT**

**RCA - 4259 SQ.FT**  
**SA - 7744 SQ.FT**

**101**

**102**

# Tower - G (1<sup>st</sup> to 14<sup>th</sup> Floor)



**Tower - H (1<sup>st</sup>, 4<sup>th</sup>, 9<sup>th</sup>, 12<sup>th</sup> Floor)**



**RCA - 3962 SQ.FT**  
**SA - 7204 SQ.FT**

**102**

**RCA - 3868 SQ.FT**  
**SA - 7033 SQ.FT**

**101**



F.B

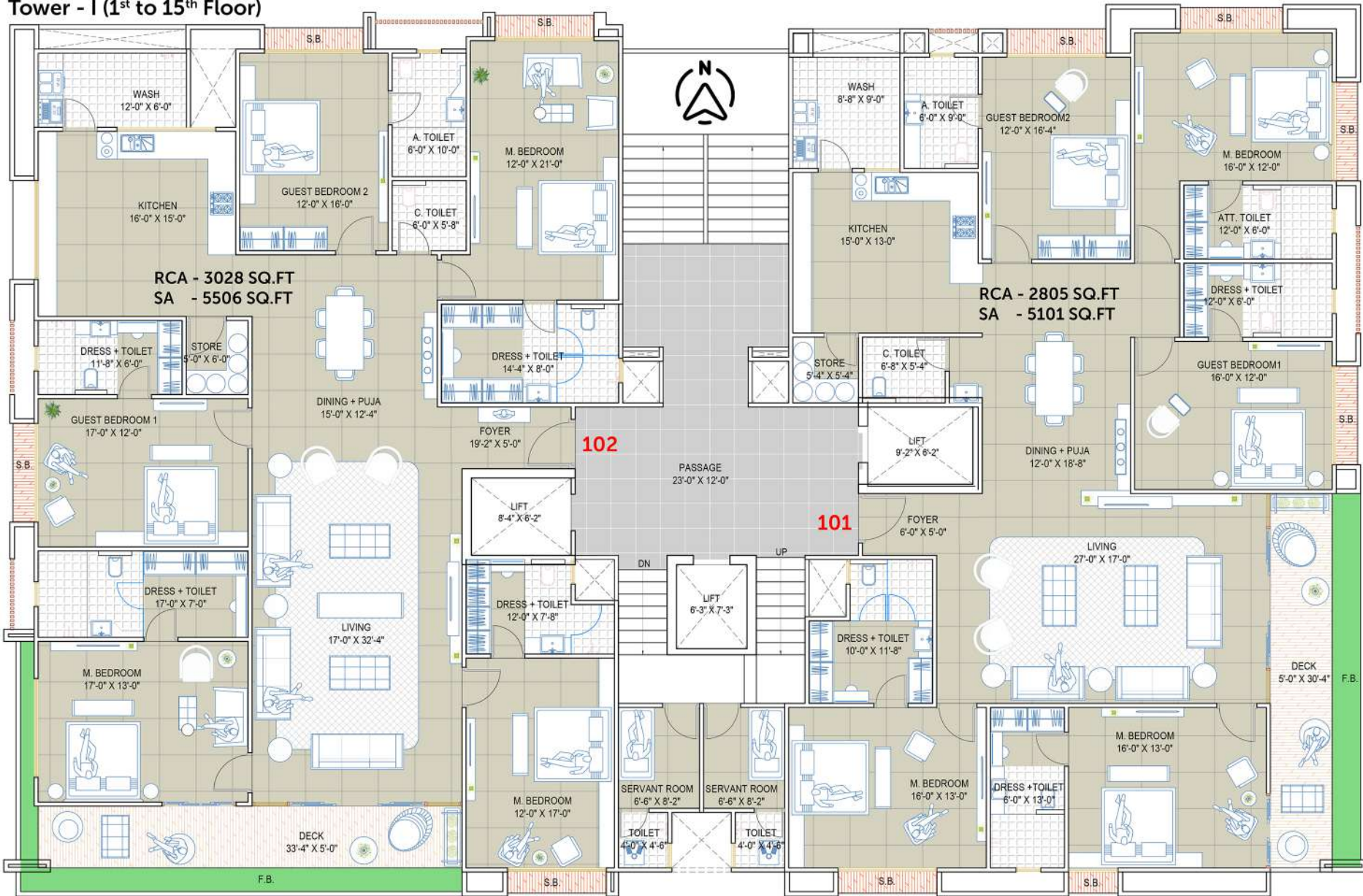
F.B

# Tower - H (2<sup>nd</sup>, 3<sup>rd</sup>, 5<sup>th</sup>, 6<sup>th</sup>, 7<sup>th</sup>, 8<sup>th</sup>, 10<sup>th</sup>, 11<sup>th</sup>, 13<sup>th</sup>, 14<sup>th</sup> Floor)





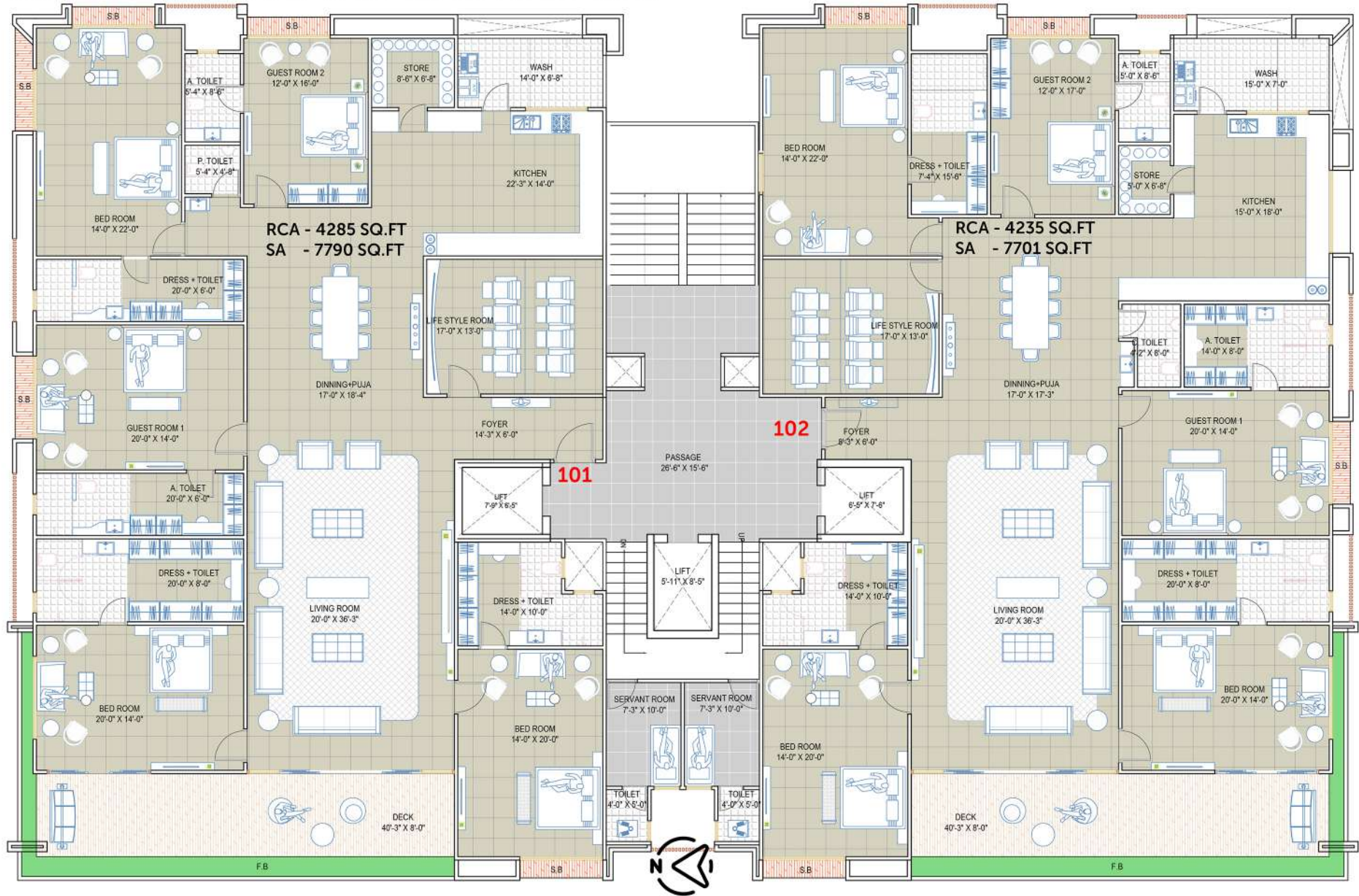
**Tower - I (1<sup>st</sup> to 15<sup>th</sup> Floor)**



**Tower - J & K (1st, 4th, 9th, 12th Floor)**



**Tower - J & K (2<sup>nd</sup>, 3<sup>rd</sup>, 5<sup>th</sup>, 6<sup>th</sup>, 7<sup>th</sup>, 8<sup>th</sup>, 10<sup>th</sup>, 11<sup>th</sup>, 13<sup>th</sup>, 14<sup>th</sup>, 15<sup>th</sup> Floor)**



SCAN FOR LOCATION

