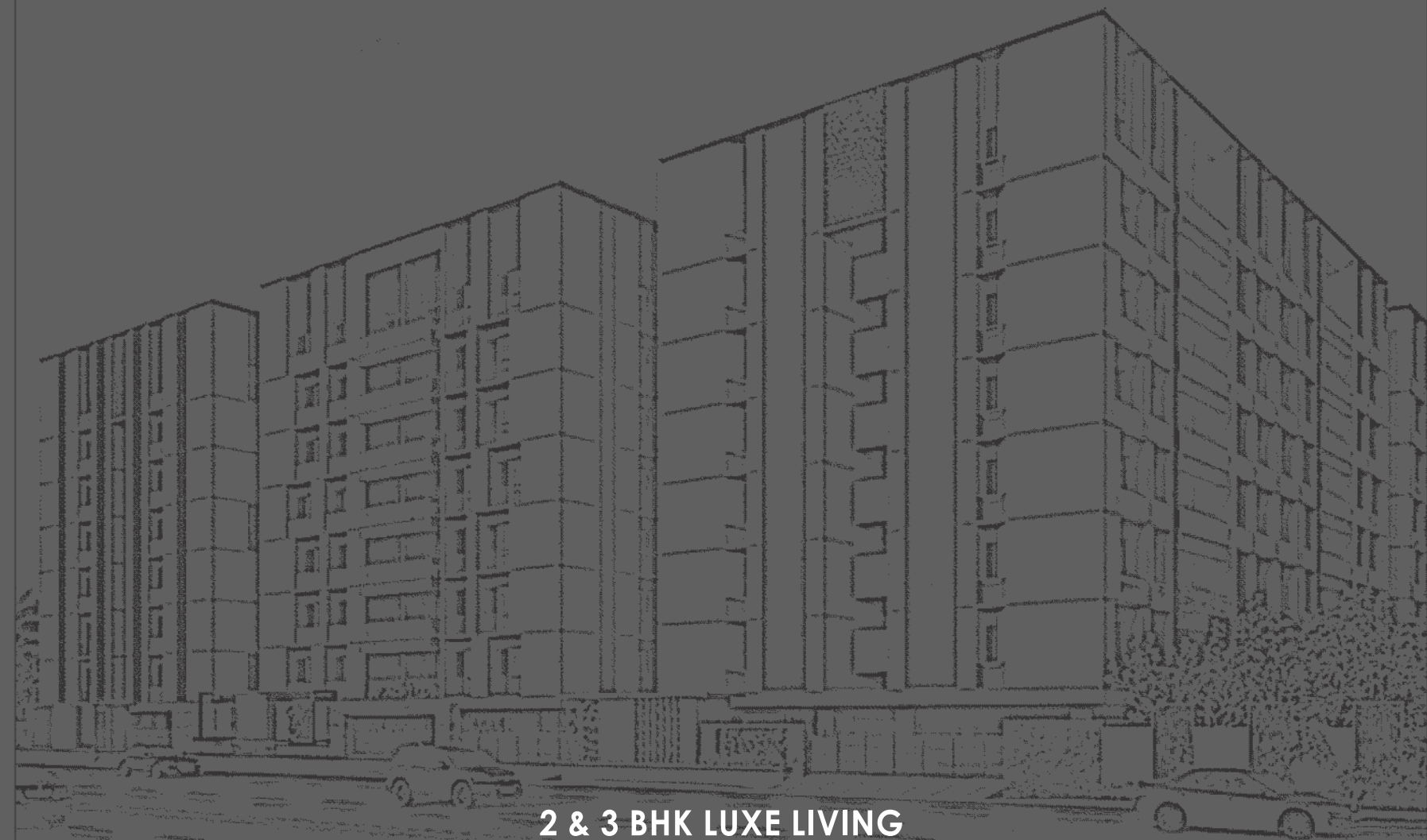




SUN | SARVAM



2 & 3 BHK LUXE LIVING



Salasar Builders was instituted in 1983. The Group was founded with a motive of creating sensible and responsive designs in housing and commercial sectors. Started with Meager resources The organization has grown steadily with inflow of physical resource and expertise. We have delivered to expectations of numerous families of living in a home that's equipped with all the basic facilities having excellent functionality but still budget friendly and a place our members would call their homes for years to come.

Our most notable past projects are **Sunshine Residency, Sunrise Residency, Shyam Residency, Sun Residency & Sun Avenue.**

4400+
HAPPY FAMILIES

33+
PROJECTS COMPLETED

4.4 MILLION
SQ.FT. CONSTRUCTED

39 YEARS
EXPERIENCE

A LIFESTYLE
THAT'S DESIGNED AROUND YOU



SUN SARVAM - As the name signifies it is complete in every sense be it the exterior build quality or the aesthetic and leisurely comfort of the interiors.



A HOME
THAT'S SCULPTED FOR YOU

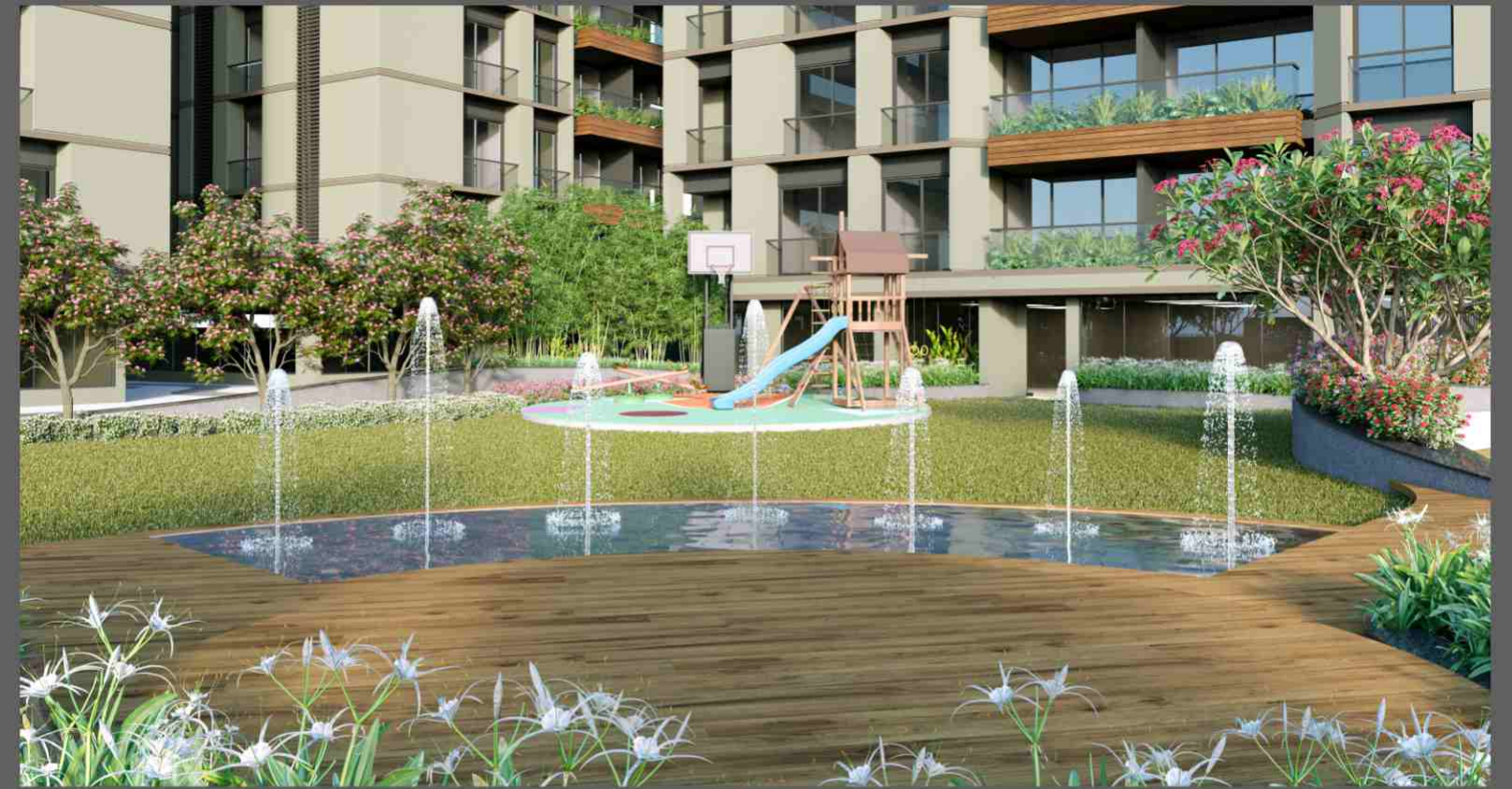
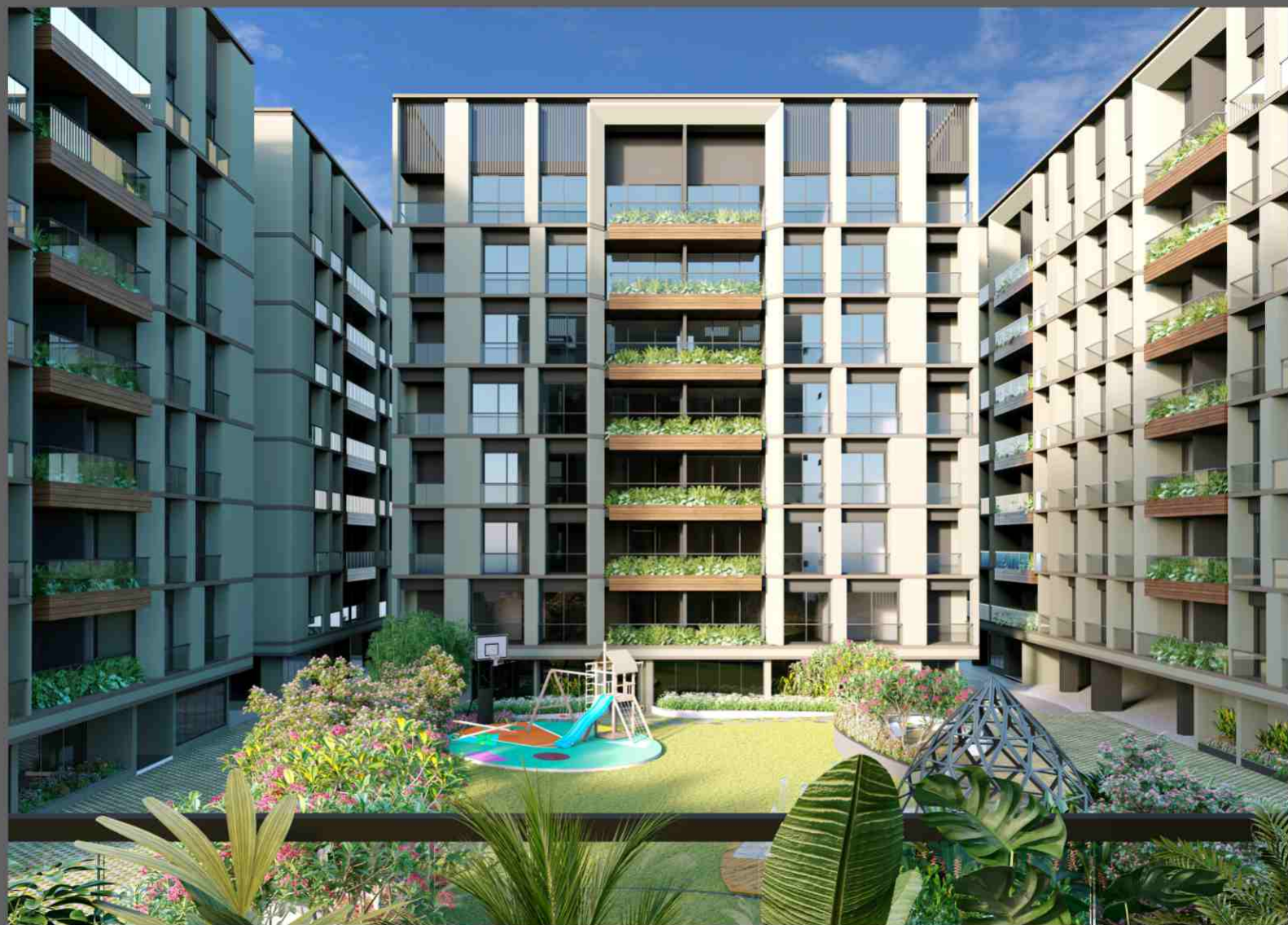


SUN SARVAM ushers in a lifestyle that's about with freshness & vitality. Everyday spent here is a powerful reminder that life is amazing & full of possibilities.



A LOCATION SO UNIQUE
CLOSE PROXIMITY TO SURAT DIAMOND BOURSE,
AIRPORT, REPUTED SCHOOLS & HOSPITALS





AMENITIES



MULTIPURPOSE HALL



OUTSIDE PLAY AREA



GYM WITH CHANGING ROOM
AND LOCKER FACILITY



BEAUTIFULLY LANDSCAPED
GARDEN WITH SEATING



YOGA / AEROBICS ROOM



TODDLER PLAY AREA



INDOOR GAMES



WALKWAY



LIBRARY



WATER FEATURE



CABANA SEATING



DOUBLE HEIGHT BASEMENT



SUN | SARVAM

THE CENTRAL SPACE IS DEVELOPED WITH AMPLE GREENERY, RECREATIONAL ACTIVITIES, SITOUTS & AESTHETIC LIGHTING FOR A BEAUTIFUL EVENING AMBIENCE.



GYM



STEAM BATH



LIBRARY



INDOOR GAMES



KIDS ZONE

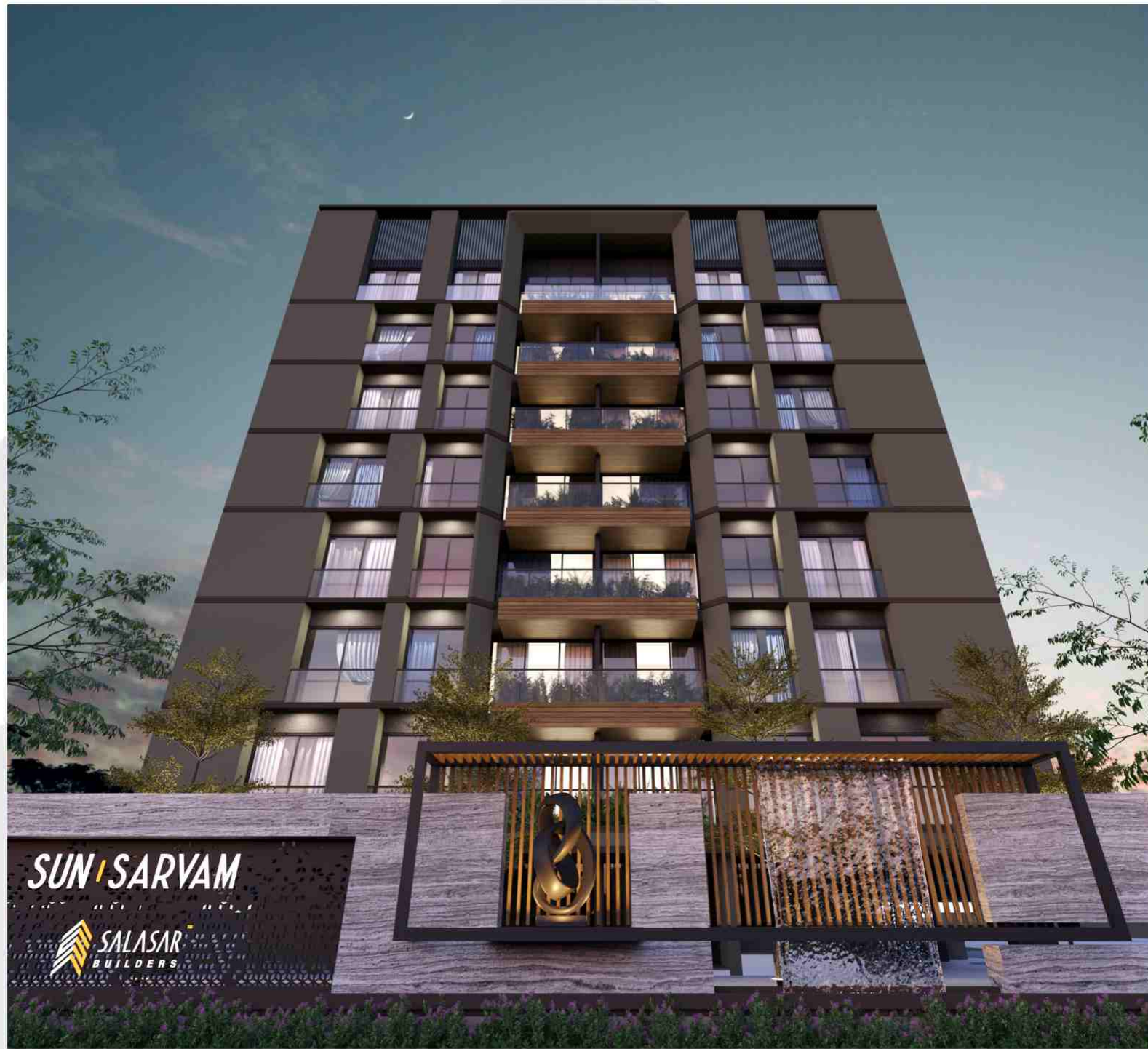


MINI THEATRE



MULTI PURPOSE HALL

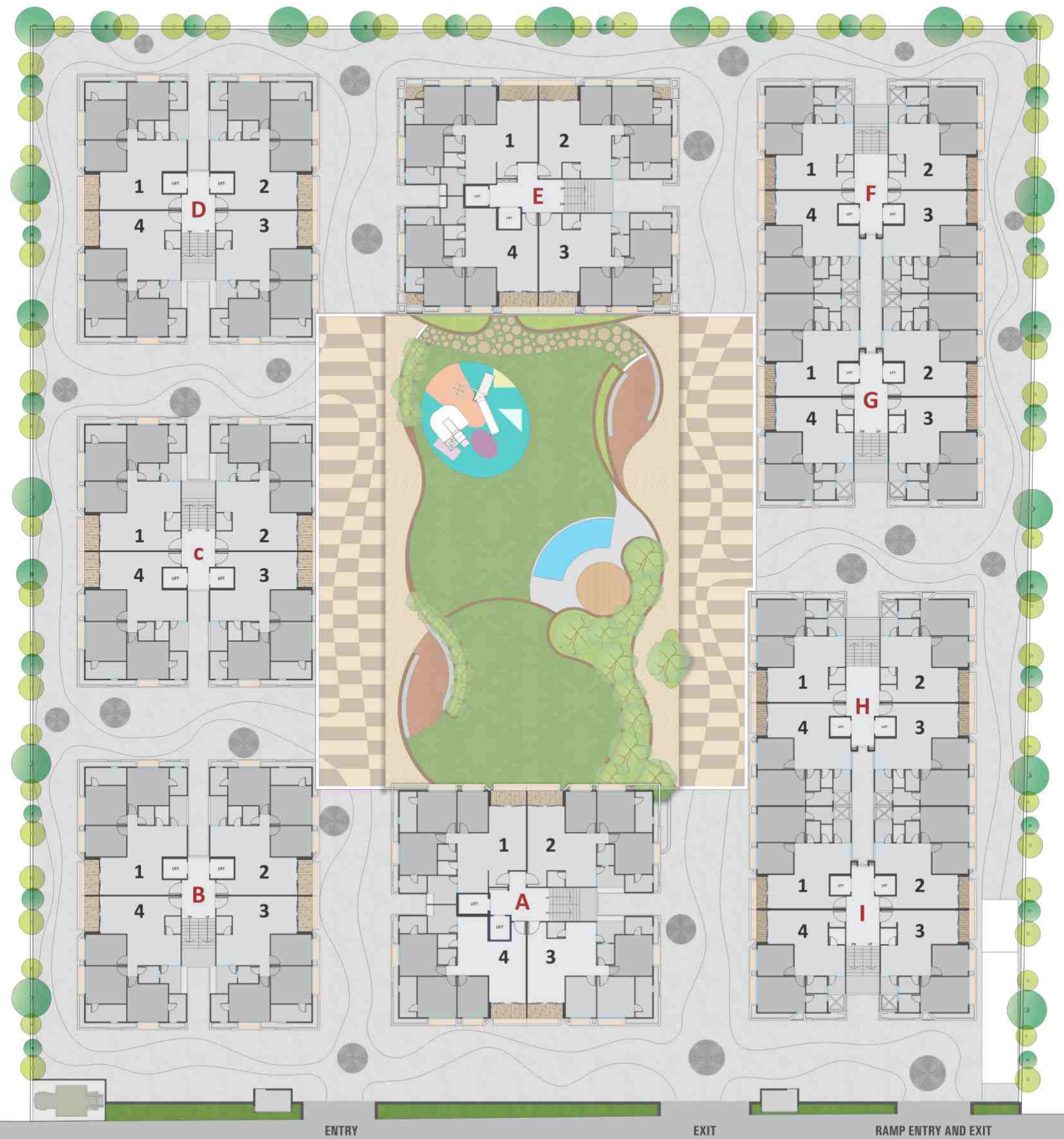
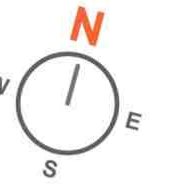
All images shown here are meant for presentation purpose only.



SUN | SARVAM

PRELUDE TO
A LUXURIOUS LIFESTYLE

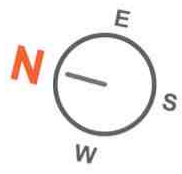
LAYOUT PLAN



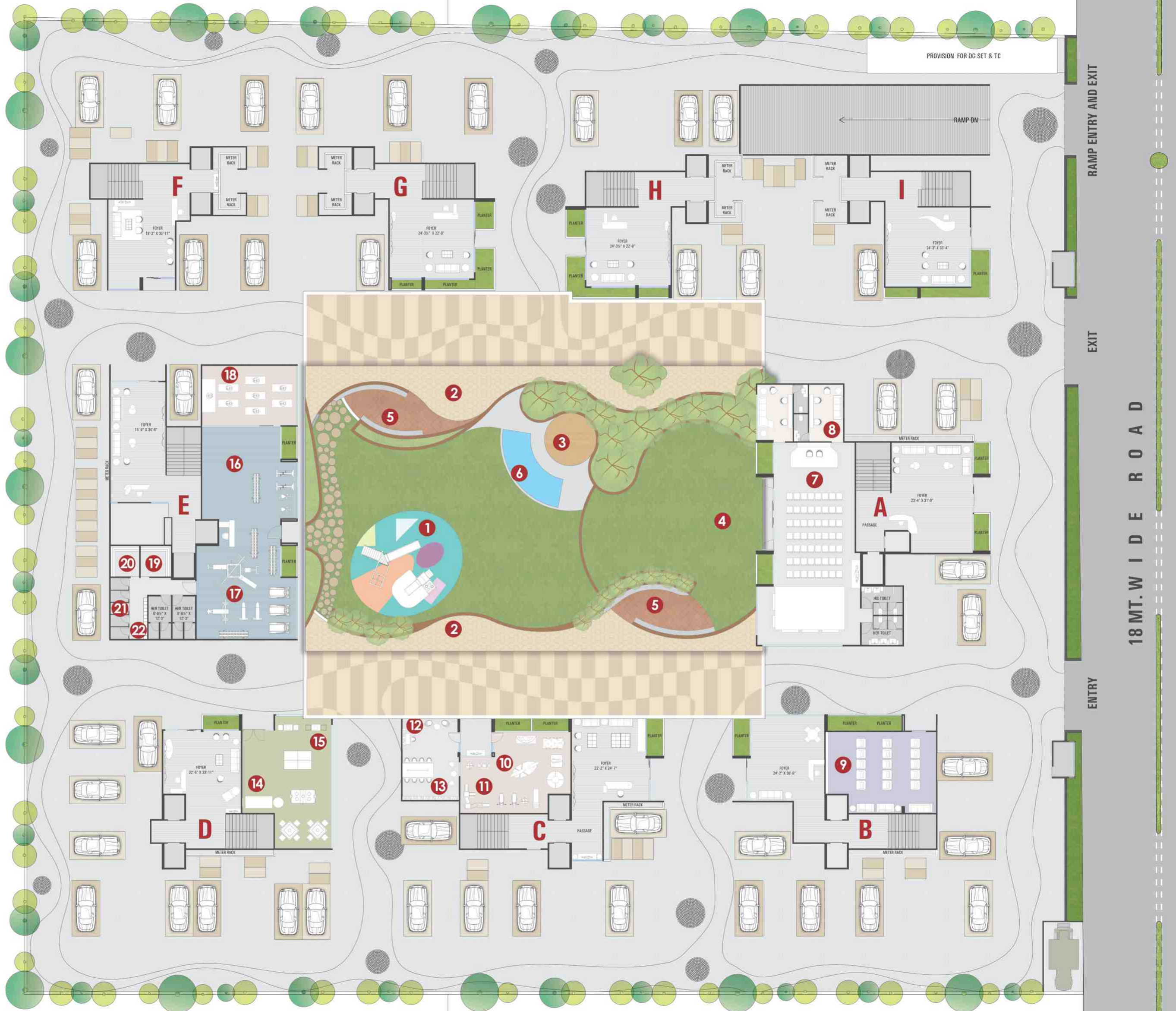
ENTRY EXIT RAMP ENTRY AND EXIT

18MT. W I D E R O A D

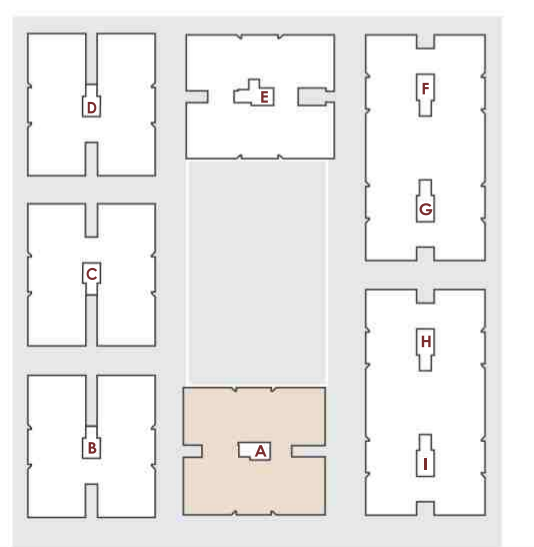
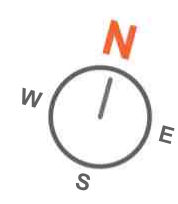
AMENITIES PLAN



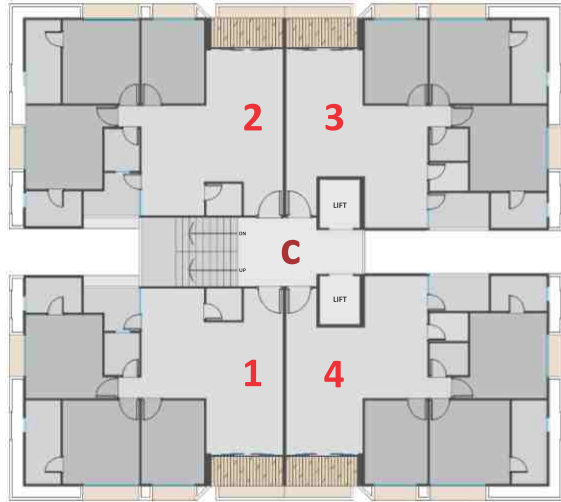
- 1 OUTDOOR KIDS PLAY AREA
- 2 WALKWAY
- 3 CABANA WITH SEATING
- 4 PARTY LAWNS
- 5 CURVED SEATING AREAS
- 6 SURPRISE JET PLAZA
- 7 MULTIPURPOSE HALL
- 8 GREEN ROOM
- 9 MINI THEATRE
- 10 TODDLER PLAY AREA
- 11 SOFT PLAY AREA
- 12 CHILDREN LIBRARY
- 13 LIBRARY
- 14 INDOOR GAME ROOM
- 15 BOARD GAME ROOM
- 16 CARDIO AREA
- 17 FLOOR TRAINING (GYM)
- 18 YOGA / AEROBICS ROOM
- 19 STEAM ROOM
- 20 SAUNA ROOM
- 21 CHANGING ROOM / SHOWER ROOM
- 22 LOCKER ROOM



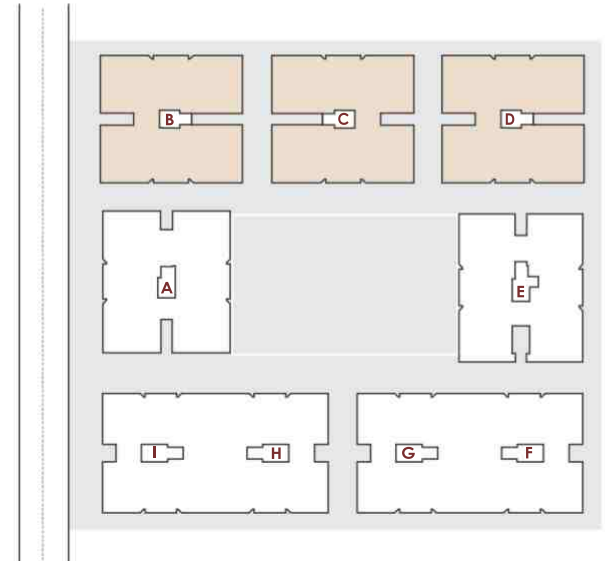
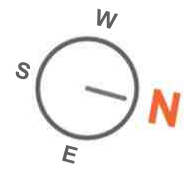
TYPICAL FLOOR PLAN
TOWER A



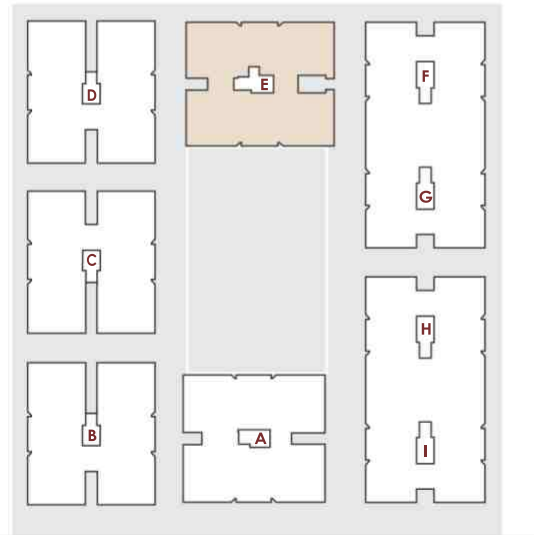
TYPICAL FLOOR PLAN
TOWER B - C - D



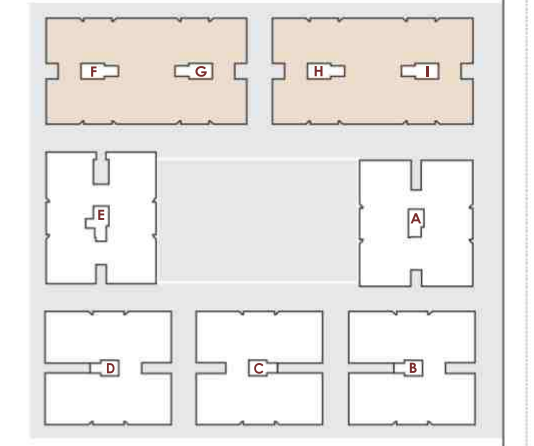
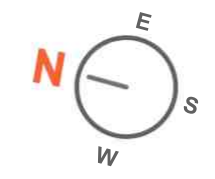
NOTE: C - TOWER ORIENTATION



TYPICAL FLOOR PLAN
TOWER E



TYPICAL FLOOR PLAN
TOWER F G - H I



FLATS SPECIFICATION

- ▼ **FLOOR FINISH**
 - Designer tiles in the living room, kitchen, dining and all bedrooms
- ▼ **DECK**
 - Designer tiles on floor
 - Attractive glass railing
- ▼ **KITCHEN**
 - Granite kitchen platform with branded sink
 - High quality vitrified tile dado upto lintel level
 - Gas connection point
- ▼ **WASH AREA & UTILITY**
 - Kota in flooring and tile dado
 - Sufficient electric and plumbing points
- ▼ **HOT WATER SYSTEM**
 - Centralised plumbing for hot water supply with gas connection in each flat
- ▼ **STORE ROOM**
 - Stone shelves with glazed tile dado
- ▼ **TOILETS**
 - Tile upto lintel level with sanitary ware of Jaquar/Cera or equivalent make
 - C. P. fittings of standard make in all toilets
- ▼ **TELEVISION, INTERNET & TELEPHONE**
 - Provision of television, internet and telephone points in each apartments
- ▼ **WALL SURFACE**
 - Putty on all plastered wall
- ▼ **ELECTRICAL**
 - Sufficient points in concealed copper wiring of RR/Polycab or equivalent make
 - ISI standard modular switches
- ▼ **DOORS / WINDOWS**
 - Designer main door with wooden frame and premium lock and fittings.
 - Wooden frame with flush door in all bedrooms.
 - Granite door frames in bathrooms.
 - All window openings provided with granite stone frame with good quality aluminium section and glass
- ▼ **PLUMBING**
 - Concealed PVC line for dual plumbing system in all flats
- ▼ **GENERATOR BACKUP**
 - Sufficient points in flat on generator backup

BUILDING SPECIFICATION

- ▼ **PARKING**
 - One car parking for each flat
- ▼ **ELEVATORS**
 - 2 Fully automatic elevators of standard make
- ▼ **ENTRANCE FOYER AND LOBBY**
 - Well designed entrance foyer and waiting area
 - Attractive lobby at all floor levels
- ▼ **OUTSIDE WALL FINISH**
 - **PLASTER** : Double coat plaster on exterior
 - **PAINT** : Attractive weather shield paint of standard make
- ▼ **POWER BACKUP**
 - Generator of adequate capacity for lift, water pumps and common facilities
- ▼ **FIRE SAFETY**
 - Fire safety system as per prevalent norms
- ▼ **SECURITY**
 - CCTV camera coverage in campus, reception and basement area

TECHNICAL SPECIFICATION

- ▼ **FLOOR HEIGHT**
 - 10 feet (slab top to slab top)
- ▼ **STRUCTURE DESIGN**
 - Earthquake resistant structural design as per latest IS codes for RCC frame structure
- ▼ **BASEMENT HEIGHT**
 - 16 feet

KEY PLAN



LEGAL DISCLAIMER

This booklet is for information purpose only. Any statement, details and information contained herein does not guarantee any legal validity. No offer or acceptance of offer is intended for properties. All pictures, images, elevation themes, amenities and their locations, parking layouts, property specifications and dimensions including plans are broad outline of the proposed development. Actual development may differ as per site conditions, approvals and such other factors. Movable items and accessories are not the part of final development. User of this booklet acknowledges that independent self-assessment of property shall be done by them based on details and information gathered from valid legal source, without relying on contents of this booklet. User of this booklet is not entitled to claim anything by relying on the information contained herein. User is advised to verify all details and information regarding sale consideration, GST and other taxes, stamp duty, registration charges, legal charges and gas connection charges, maintenance deposit and such other charges and levies, which are to be borne by them.