

A PROJECT BY



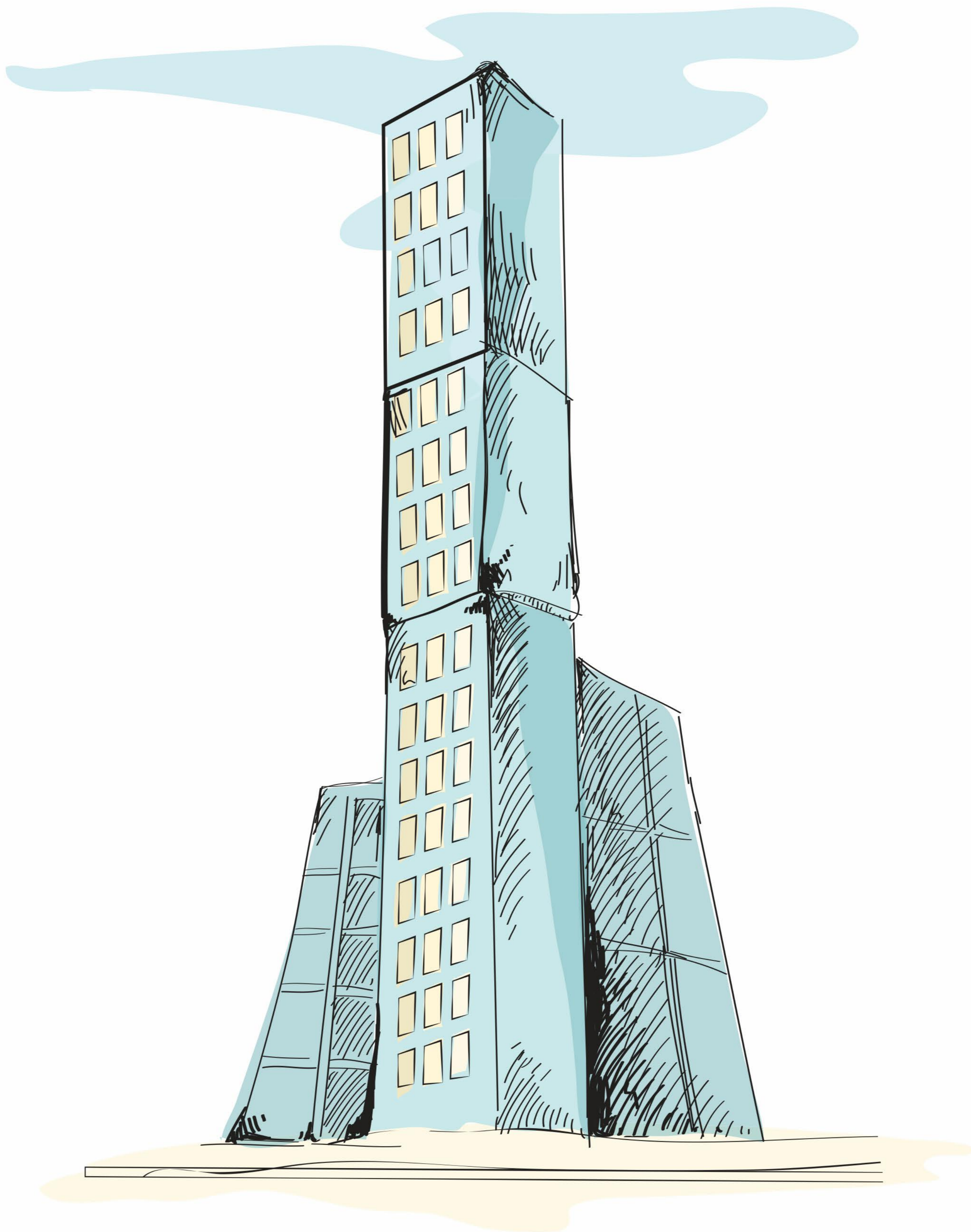
Homes inspired by nature...

The main logo for the project, featuring the word "ECO" in a green, sans-serif font above the word "ONE" in a large, brown, serif font. A green leaf icon is positioned above the "ECO" text.

ECO ONE

Sustainable Spaces, Limitless Possibilities

COMING SOON



ECO
ONE

Sustainable Spaces, Limitless Possibilities

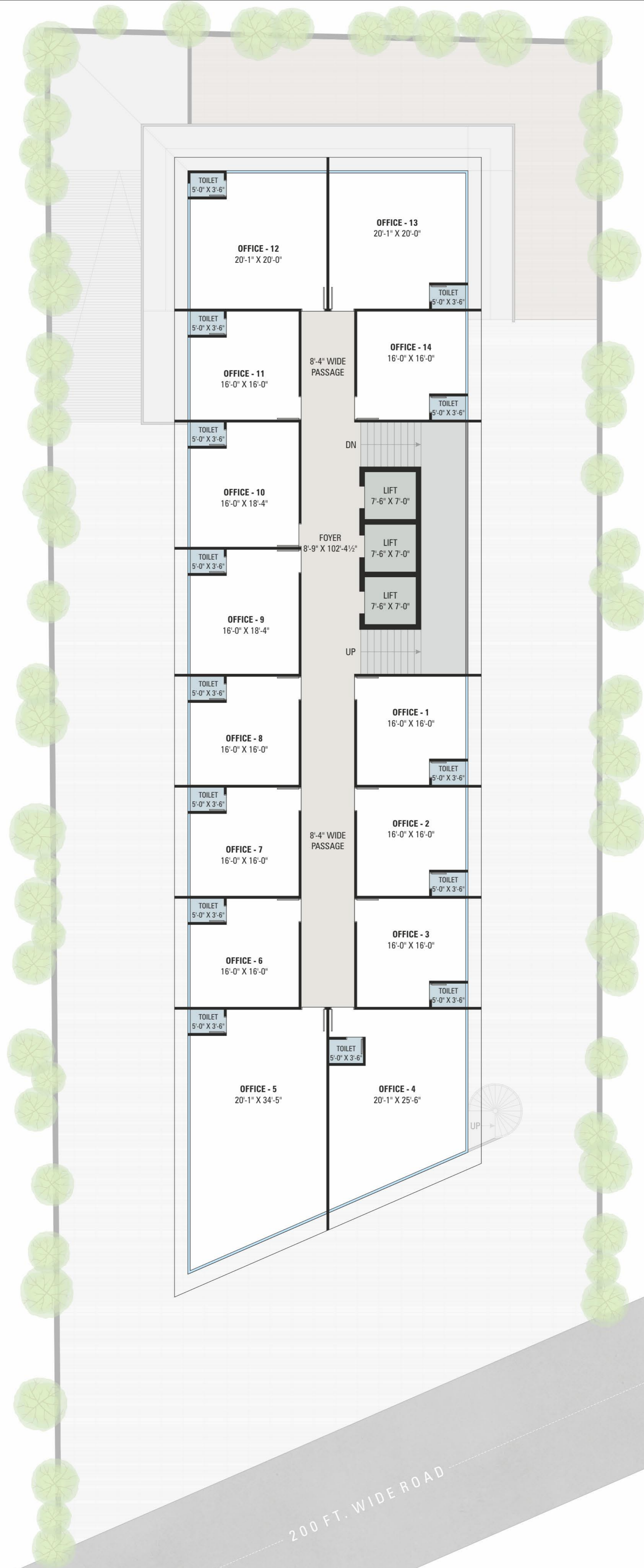




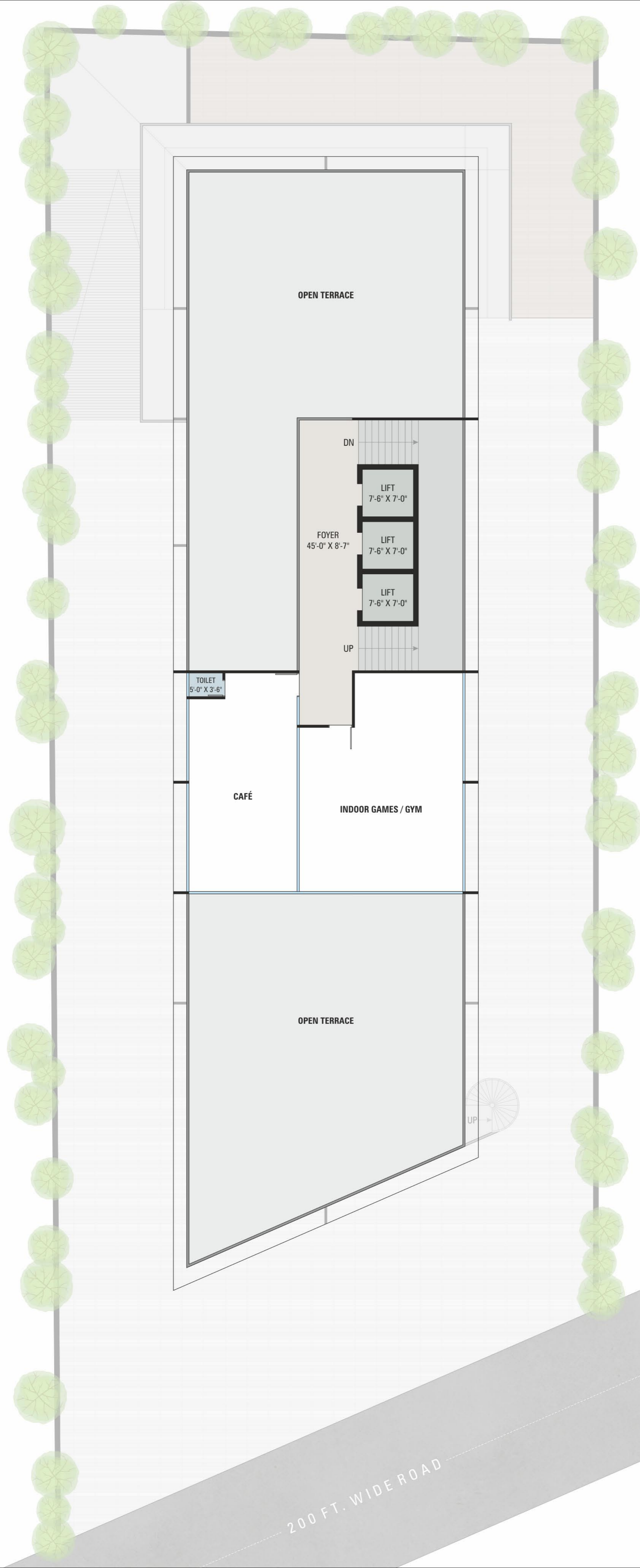
200 FT. WIDE ROAD



200 FT. WIDE ROAD



200 FT. WIDE ROAD



200 FT. WIDER ROAD



ECO ONE

Sustainable Spaces, Limitless Possibilities

SPECIFICATIONS



Floor Finish

- Italian finish in foyer.
- Showrooms and offices with 32" x 32" vitrified tiles.
- Passage with 4' x 6' vitrified tiles.



Façade

- Elegant glass façade.



Plumbing

- Standard quality pipes of Astral / Aashirwad.



Bathroom

- Standard quality sanitary ware of Jaguar / eq. make with Jaguar / Cera ceramics.



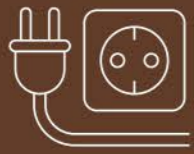
Wall surface

- Putty on all plastered walls.



Air conditioning

- Provision for A.C drain pipe.



Electrical

- Sufficient points in concealed copper wiring of Polycab / RR Kabel / Finolex.
- Modular switches of Honeywell / M.K.
- 3 phase meter.
- Adequate power backup on each apartment of 5 AMP.



T.V., internet, telephone

- Convenient provision of internet, telephone and T.V. points in each showroom / office.



Bathroom

- Decorative high quality vitrified tiles (24" x 24" in floor & dedo) upto lintel level with standard quality sanitary ware of Jaguar / eq. make in all bathroom.

