

# ORBIT 4

OFFICES • SHOWROOMS • RESTAURANT • CAFES

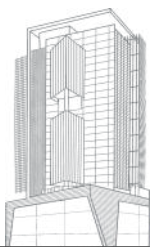
📍 Ishwar Desai Farm, Joggers Park Road, Surat

# ORBIT 4

ACHIEVING  
THE PINNACLE  
OF SUCCESS  
WITHIN SURAT'S  
PREMIER CORPORATE  
COMMUNE

SECURING THE ZENITH OF SUCCESS WITHIN SURAT'S  
FOREMOST CORPORATE COMMUNITY INVOLVES  
NOT JUST REACHING THE PINNACLE OF INDIVIDUAL ACHIEVEMENT  
BUT SIGNIFIES THE RECOGNITION AND ESTEEMED STATUS  
ACHIEVED WITHIN THE CITY'S PREMIER BUSINESS ENVIRONMENT,  
REFLECTING EXCELLENCE, LEADERSHIP, AND PROMINENCE  
IN THE DYNAMIC CORPORATE LANDSCAPE OF SURAT.

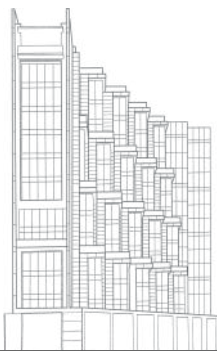
HAVING ALREADY TRANSFORMED  
RESIDENTIAL LIVING BY CRAFTING  
SOME OF THE MOST SOUGHT-AFTER  
ADDRESSES IN SURAT, PRAMUKH  
GROUP IS STRATEGICALLY  
POSITIONING ITSELF AS A SIGNIFICANT  
FORCE IN THE COMMERCIAL REAL  
ESTATE SECTOR. DEMONSTRATING  
A PROVEN TRACK RECORD WITH  
THE DELIVERY OF 4 LAKH SQ.FT.  
OF DISTINCTIVE OFFICE AND RETAIL  
SPACES, PRAMUKH GROUP IS  
ACTIVELY ENGAGED IN AN  
ADDITIONAL 1.0 MILLION SQ.FT.  
OF ONGOING DEVELOPMENT.  
THESE AMBITIOUS PLANS ENCOMPASS  
A RANGE OF VERTICALS, INCLUDING  
OFFICES, RETAIL ESTABLISHMENTS,  
AND FAMILY ENTERTAINMENT  
VENUES, UNDERSCORING A  
STEADFAST COMMITMENT TO  
SHAPING INNOVATIVE AND DYNAMIC  
SPACES ACROSS DIVERSE SECTORS.



ORBIT 1



ORBIT 2



ORBIT 3

ORBIT 4 IS A REFLECTION  
OF FINESSE CRAFTED AND  
DECORATED BY THE BRILLIANT  
TEAM OF MQA ARCHITECTS.  
FROM IMAGINATION TO BUILDING  
TECHNIQUES MQA HAS BROUGHT  
THE VISION OF MODERNISM INTO  
REALITY. DESIGNS AND STRUCTURES  
LIKE THIS WILL ALWAYS AMPLIFY  
THE BEAUTY OF THE TOWN AND  
MEET ALL THE CHALLENGES OF THE  
EVOLVING TIMES. PRAMUKH GROUP  
HAVE ALWAYS BEEN URBAN  
PLANNERS; WITH MQA, WE HAVE  
BROUGHT THE MOST INFLUENTIAL  
PROJECT TO LIFE.



NEAREST  
CORPORATE BUILDING  
FROM GHOD DOD ROAD



---

## UNIQUE FEATURES OF ORBIT 4



**G + 12**  
FLOORS



**3 LEVEL**  
BASEMENT PARKING



**3.85 MTR**  
FOYER HEIGHT



**EXCLUSIVE TERRACE**  
ACCESS TO SELECTED OFFICES



**11 FT**  
FLOOR HEIGHT



**OPEN AIR**  
CAFETERIA



**HIGHSPEED**  
**4 ELEVATORS**



**USE OF GSC**  
SUN BREAKERS



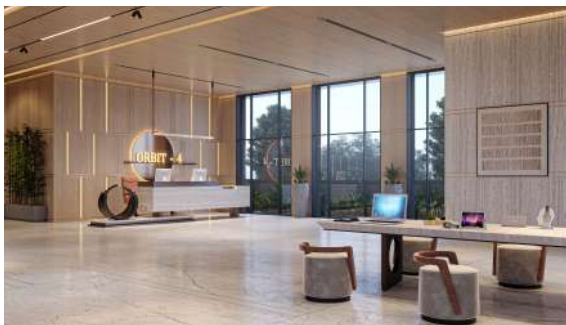






---

GRANDEURNESS  
THAT MAKES YOU GAZE







## HIGHLIGHTS OF UNIQUE FEATURES

---

EXCLUSIVE TERRACE ACCESS TO SELECTED OFFICES  
AN ICONIC BUILDING WITH FUTURISTIC ELEVATION  
UNIQUELY DESIGNED RETAIL SPACE WITH MAXIMUM ROAD FRONTAGE  
EXQUISITE 3.85 MTR HEIGHT FOYER  
3-LEVEL BASEMENT PARKING WITH DEDICATED PARKING SPACE  
12' AND 14' HEIGHT FOR SHOWROOMS WITH VIRTUALLY COLUMN-FREE SPACE

## SUSTAINABLE DESIGN

---

EARTHQUAKE RES. STRUCTURE  
WATER HARVESTING  
USE OF LED  
USE OF POWER-SAVING EQUIPMENT LIKE PUMP, LIFT ETC  
USE OF ECO-FRIENDLY MATERIAL LIKE AAC BLOCK  
TOXIN FREE COLORS  
HYDRO-PNEUMATIC WATER SYSTEM

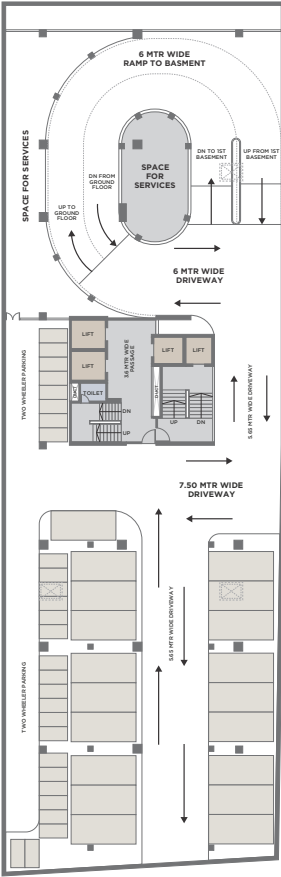
## PROFESSIONALLY MANAGED FACILITIES

---

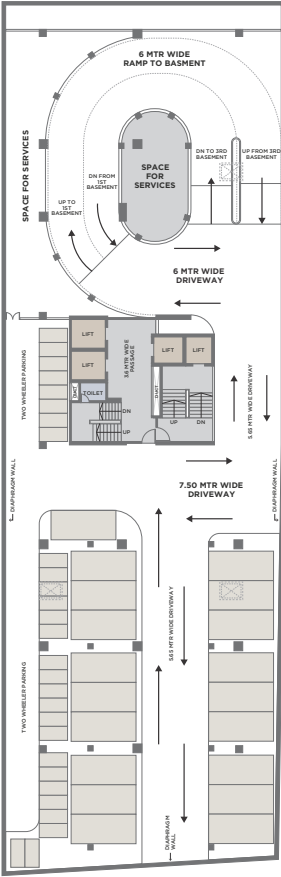
HOUSE-KEEPING  
ELECTRICIAN  
PLUMBER  
24X7 SECURITY  
PEST CONTROL  
FIRST AID  
AMC MANAGEMENT



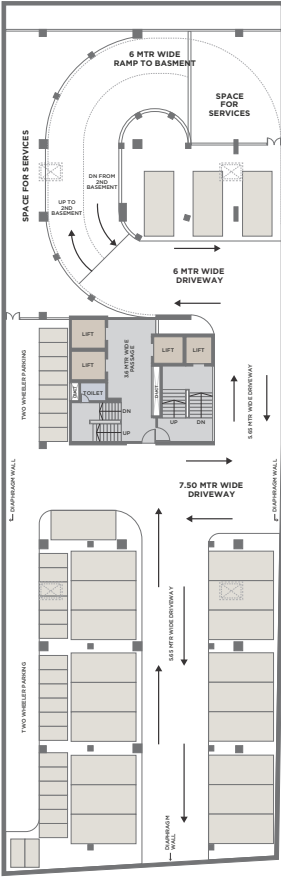
BASEMENT 1  
FLOOR



BASEMENT 2  
FLOOR

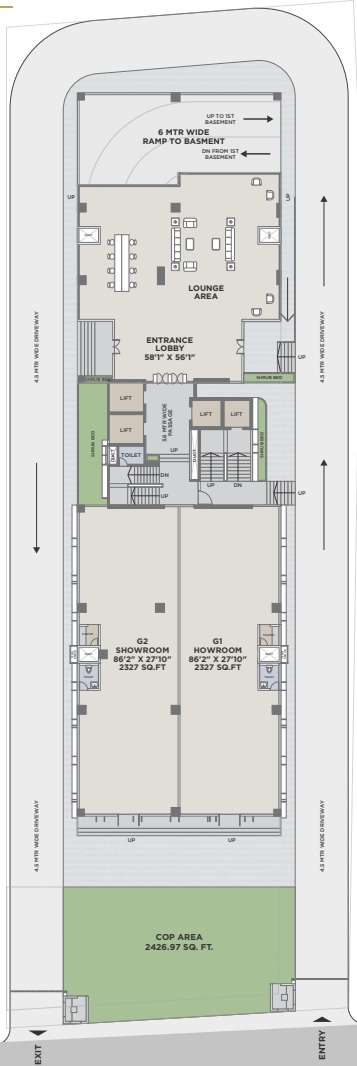


BASEMENT 3  
FLOOR

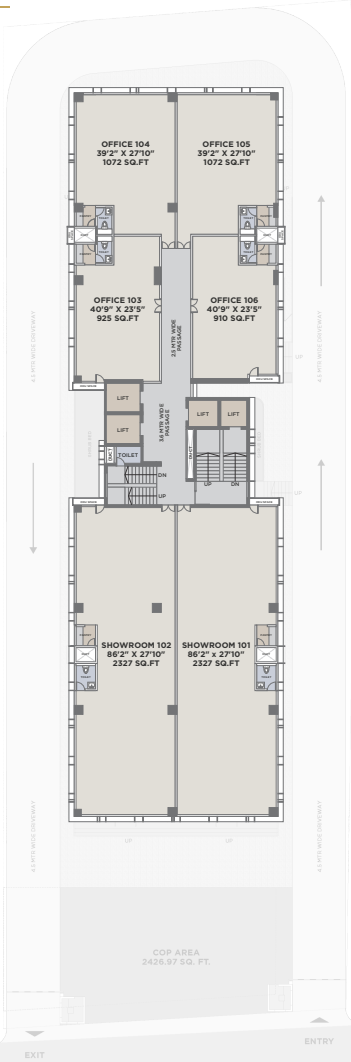




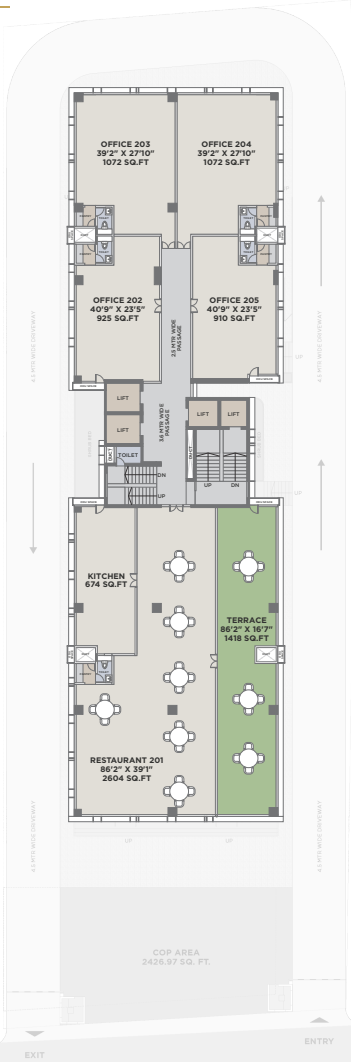
GROUND FLOOR



FIRST FLOOR

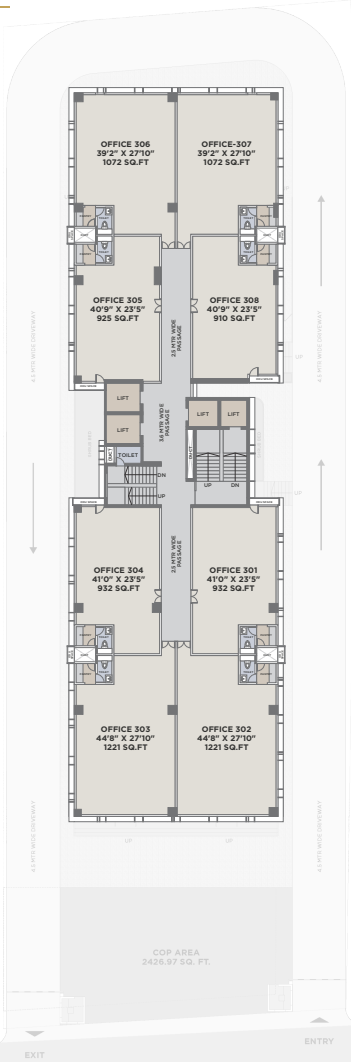


SECOND FLOOR



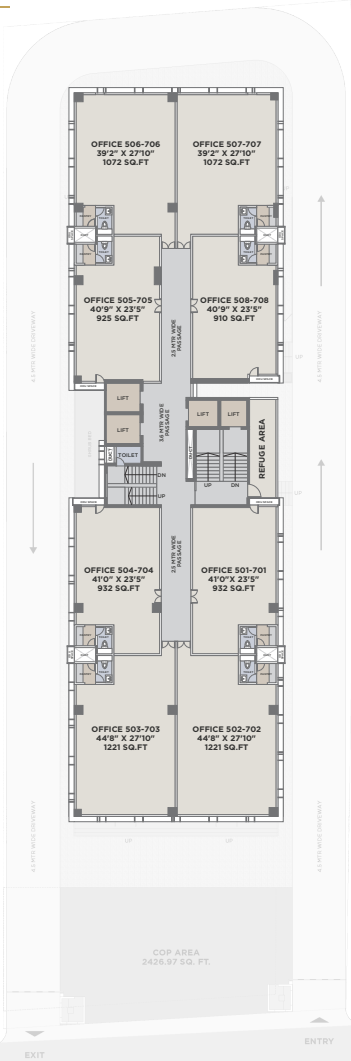
TYPICAL FLOOR

3RD-4TH-6TH  
8TH-9TH-10TH

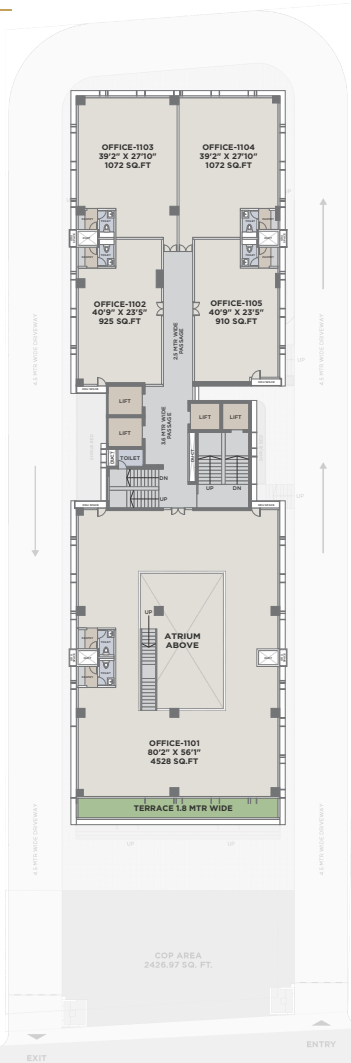


REFUGE  
FLOOR

5TH-7TH



11TH  
FLOOR



$\text{N}^{\ominus}$

# SPECIFICATION

---

## STRUCTURE

RCC Frame Structure with AAC Blocks Partitions

## PLUMBING

All Water Supply shall be CPVC and Drainage Line in PVC.

Premium quality plumbing fixtures (Hindware, Grohe, Jacquar, Kohler or equivalent) shall be provided for Toilets.

Sanitaryware will be Cera, Simpolo, Hindware or equivalent

## FAÇADE

Premium quality, noise free Glass Glazing on exterior surface

## ELEVATORS

Premium quality Elevators (Johnson, Kone, TKE or equivalent) shall be provided with automatic doors and SS Finish inside the cabins, with multi-beam sensors for door operations.

## FLOORING AND WALL CLADDING

Showroom Flooring - 600mm X 600mm VT Tiles

Office Flooring - 600mm X 600mm VT Tiles

Toilet Flooring - 600mm X 600mm Tiles (Matt Finish)

Toilet Dado - 600mm X 600mm Tiles - Upto 4feet (Matt Finish)

Pantry - Water Point and Drainage Point

Restaurant Terrace Flooring - 600mm X 600mm Tiles (Matt Finish)

Door Framing - Granite Frame

Common Passage Flooring - 600mm X 600mm VT Tiles (Matt Finish)

## INTERNAL SURFACE FINISHES

Showroom Walls - Smooth Gypsum with Primer Finish

Office Walls - Smooth Gypsum with Primer Finish

Office Ceiling - Exposed RCC Finish

## DOORS

Main Door - Decorative Shutters with Laminate Finish and Branded Locks and Handle

Internal Doors - Laminated Flush Doors with Motorised Locks





ORBIT 2  
By Pramukh



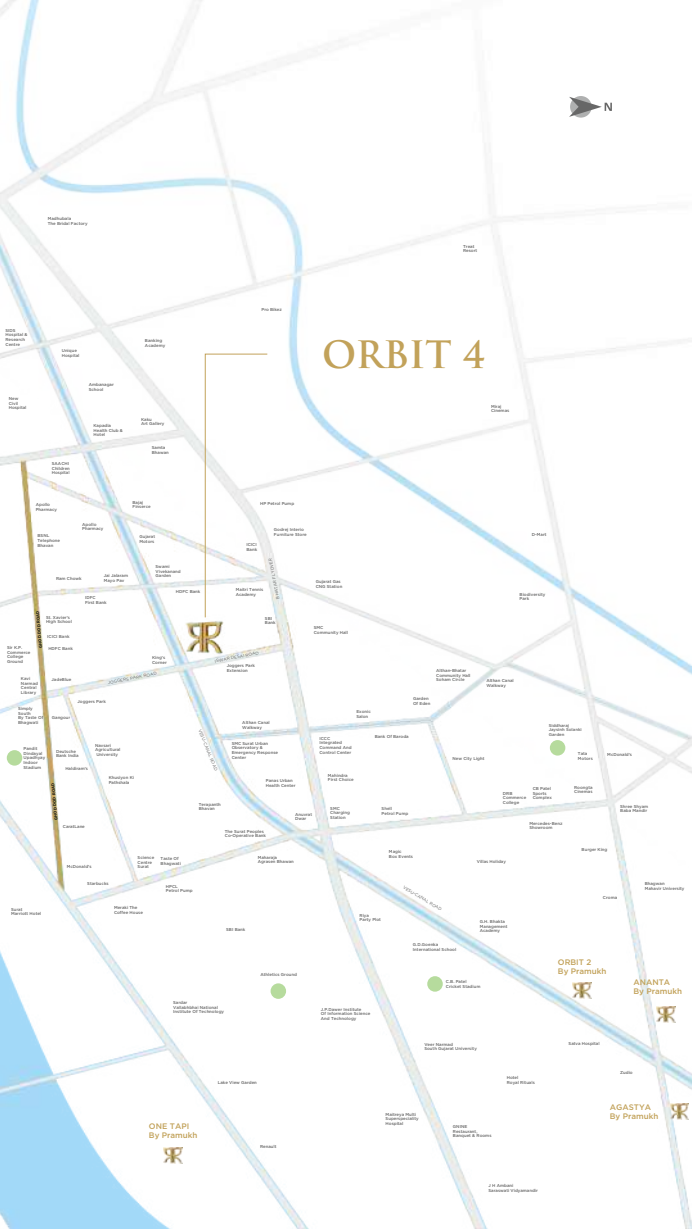
ANANTA  
By Pramukh



AGASTYA  
By Pramukh



ONE TAPI  
By Pramukh



## COMPLETED PROJECTS

---

ARANYA

VIVANTA

ORBIT 1

ORBIT 2

## ONGOING PROJECTS

---

AGASTYA

4 BHK LUXURIOUS LIVING

ANANTA

4 BHK SPACIOUS LIVING

REVANTA

3 BHK FINE LIVING

SATVA

EXCLUSIVE 3 BHK APARTMENTS

CENTRAL PARK

3-3.5-4-4.5 BHK APARTMENTS

AMAYA

2-3 BHK LUXURIOUS LIVING

ARANYA II

2-3 BHK LUXURY HOMES

ORBIT PLAZA

SHOPS & SHOWROOMS

ARANYA III

EXCLUSIVE 3 BHK APARTMENTS

ORBIT 3

SHOWROOMS, OFFICES, CAFES & RESTAURANTS

ONE TAPI

BESPOKE RESIDENCE

5 BHK APARTMENTS & 6 BHK PENTHOUSE

## UPCOMING PROJECTS

---

ORBIT 5

SHOWROOMS, OFFICES, CAFES & RESTAURANTS

ZENITH

SHOWROOMS, OFFICES & CAFES



# AWARD WINNING PAST PROJECTS - SURAT

---

## ARANYA

2017 - Mid Segment  
Project Residential

2018 - Excellence In  
Delivery Award



## ORBIT 1

2019 - Excellence In  
Delivery Award

2019 - Architect Of  
The Year Award



## ORBIT 2

2020 - Excellence In  
Delivery Award



## Vivanta

2023 - Silver IGBC  
Green Home Certificate

2024 - Most Environment-  
Friendly Residential Space



## ARANYA II

2024 - Silver  
IGBC Green  
Affordable Housing  
Certificate



## ONE TAPI

2024 - Innovative  
Marketing Concept  
Of The Year





## SOUTH GUJARAT'S LEADING REAL ESTATE DEVELOPER

Derived from the word 'Prime', Pramukh was established in the year 1993, and is on the path of delivering iconic and class apart projects since then.

Pramukh group has been providing aesthetically appealing and comfortable properties in Surat, Vapi, Silvassa and Umbergaon.

Over the last 30 years, we have enjoyed the patronage of over 13,000+ families, with more than 17 million sq. Ft. constructed floor space.

Welcome To 'A Class Of Its Own'

17 MILLION+ SQ. FT. DELIVERED

26 ONGOING PROJECTS IN 3 CITIES - SURAT, VAPI & SILVASSA

8.4 MILLION+ SQ. FT. UNDER DEVELOPMENT

13,000+ HOMES DELIVERED

6700+ HOMES IN PROGRESS

# ORBIT 4

OFFICES • SHOWROOMS • RESTAURANT • CAFES

**Developers**  
**Canal Point Realty LLP**

**Site Address**  
FP-90/91, TP-27, Ishwar Desai Farm, Ishwar Desai Brts Junction,  
Joggars Park Road, Bhatar, Surat-395007

**Corporate Address**  
**Pramukh Group**  
1001-1002, Orbit 2, Vesu-Canal Road,  
Beside Celestial Dreams, Vesu, Surat-395007

**FOR BOOKING**  
+91 757 4870 757  
inquiry@mypramukh.com | www.pramukh.co.in

**ARCHITECTS**  
MQA, Mumbai

**STRUCTURAL CONSULTANTS**  
Technocrat Consultant, Surat

**PMC**  
Studio 13, Surat



DISCLAIMER: Premium quality materials or equivalent branded products shall be used for all construction work • DGVCL charges, gas charges, legal charges and other Govt.charges shall be paid separately. • Maintenance deposit shall be paid separately. • Right of any changes in dimensions, design & specifications will be reserved with the developer, which shall be binding for all members. • External changes strictly not allowed. • Stamp duty, registration fees, and service tax charges on allotment and possession of the property shall be borne by the purchaser, applicable as per prevailing law. • Any additional liabilities due to change in the by-laws, stamp duty govt. laws shall be borne by the members. • New rate will be applicable in case of delay in payment terms. Terms & conditions will be as per separate agreement. • This brochure is meant only for information, presentation & guidance purposes, It is not an authorized document or an agreement. This does not form the basis of any contract. • Variations may occur as per local regulations and developer's policy of improvement.