



Bhawans Ultima

Coming Soon



Unfolding a green
Luxury World

12 feet floor-floor height



PERFECT CONFLUENCE OF NATURE AND ULTRA LUXURY LIFESTYLE

**IN ONE OF THE MOST PREMIUM
LOCATION OF SURAT**



Bhawans - Ultima, a gated community redefined the fast-evolving locale of Vesu, Surat. World-class amenities, connectivity, and vast open spaces have made it a sought-after residential project.

Launching, the Ultima, as a part of the next phase which is an upcoming project, offers 4 BHK & 5 BHK Ultra Luxurious Living. Each residence is thoughtfully designed to have maximum utilization of space through careful planning, while amenities give the residents plenty of options to stay healthy and fit in a thriving community.

Gaze at the evening sun from the spacious deck of your home. Feel the calming breeze on your morning walks, and raise your spirits at the expansive pool, indoor games, and a plethora of outdoor sports and amenities. Come home every day to a spacious life. And gift your family a whole new lifestyle. Everything is larger than life at Bhawans - Ultima.

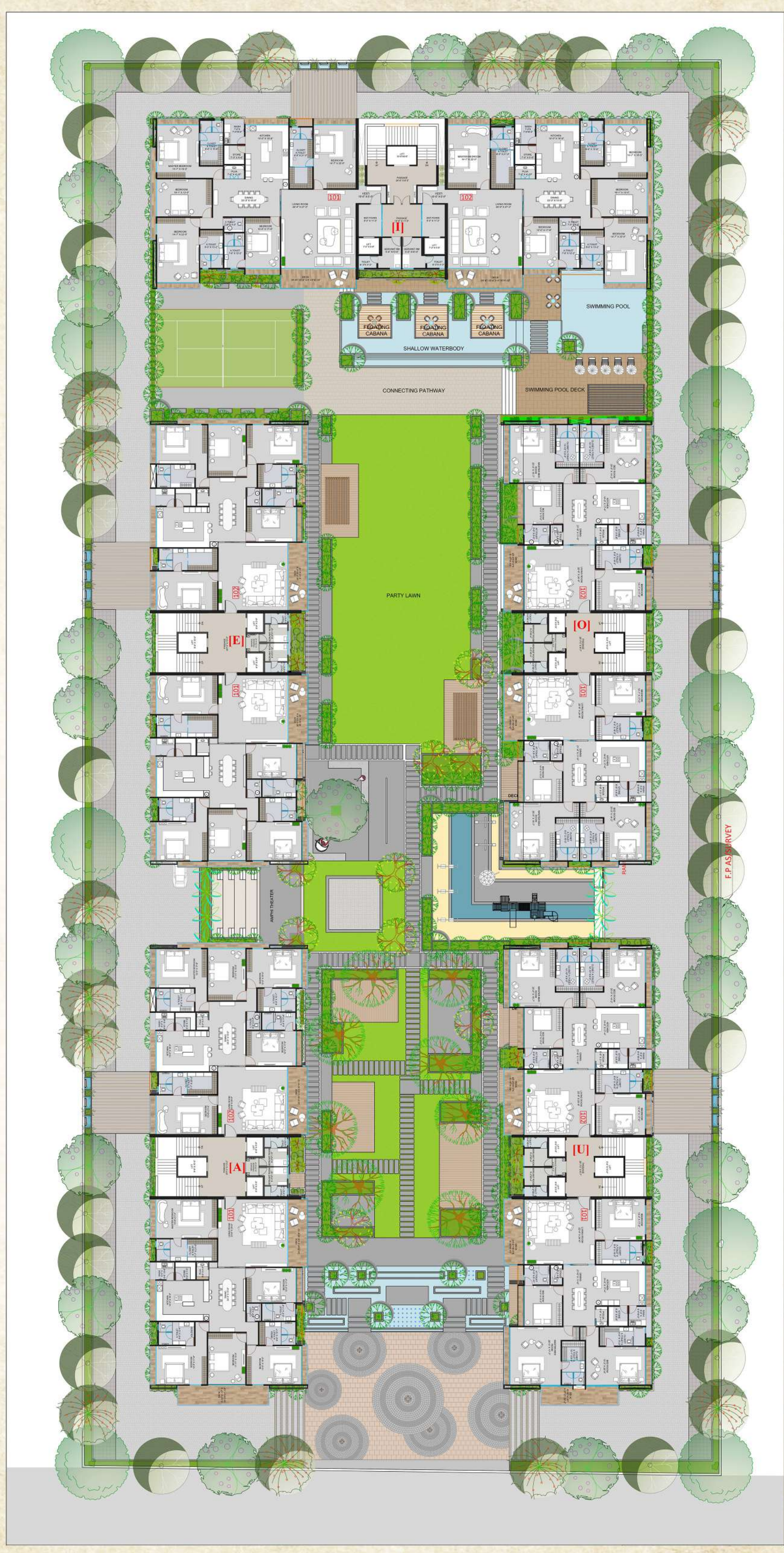


4-5 BHK
Ultra Luxurious Living
Coming Soon



North

Typical Layout





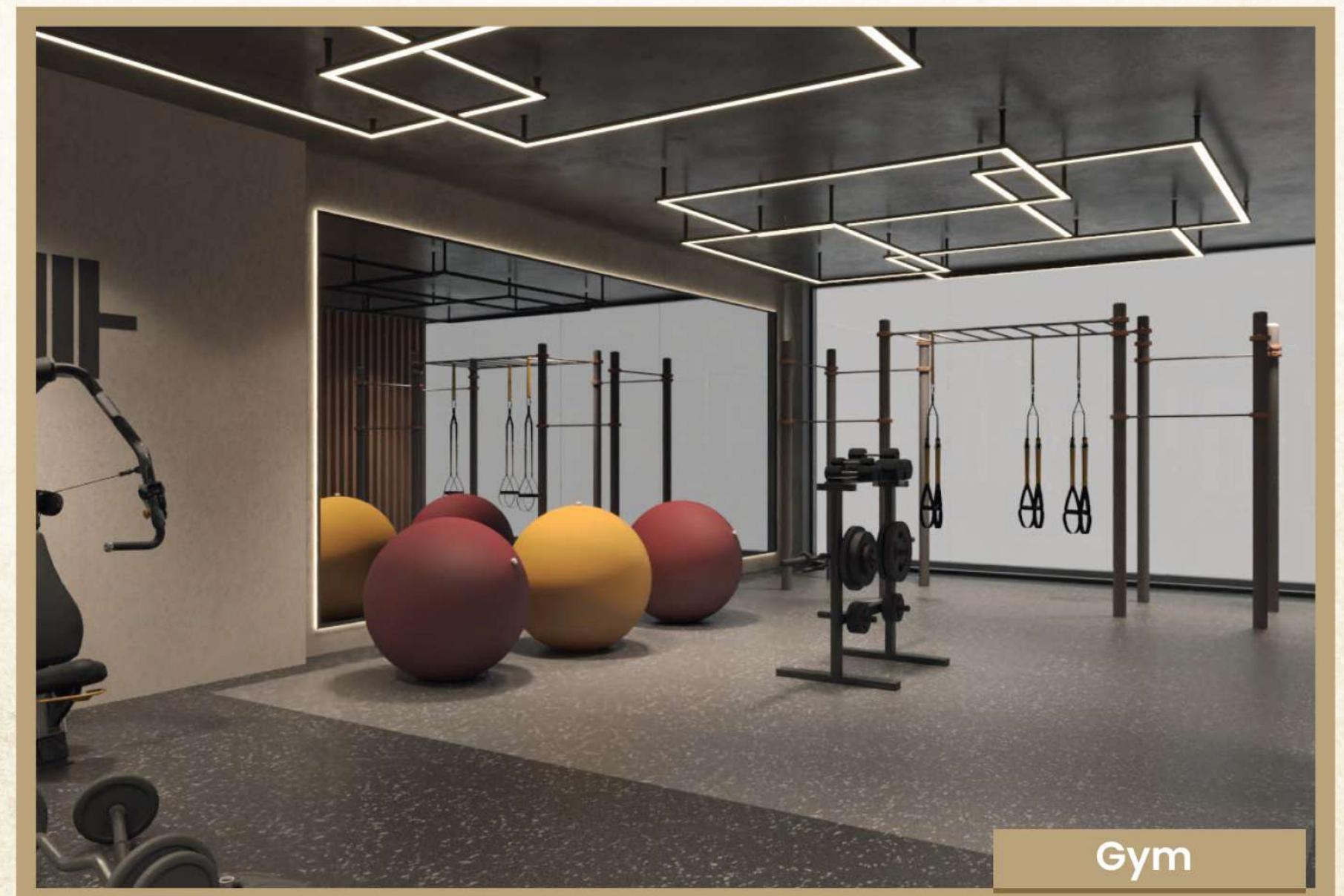
Ground Layout



Vastu Viabilities

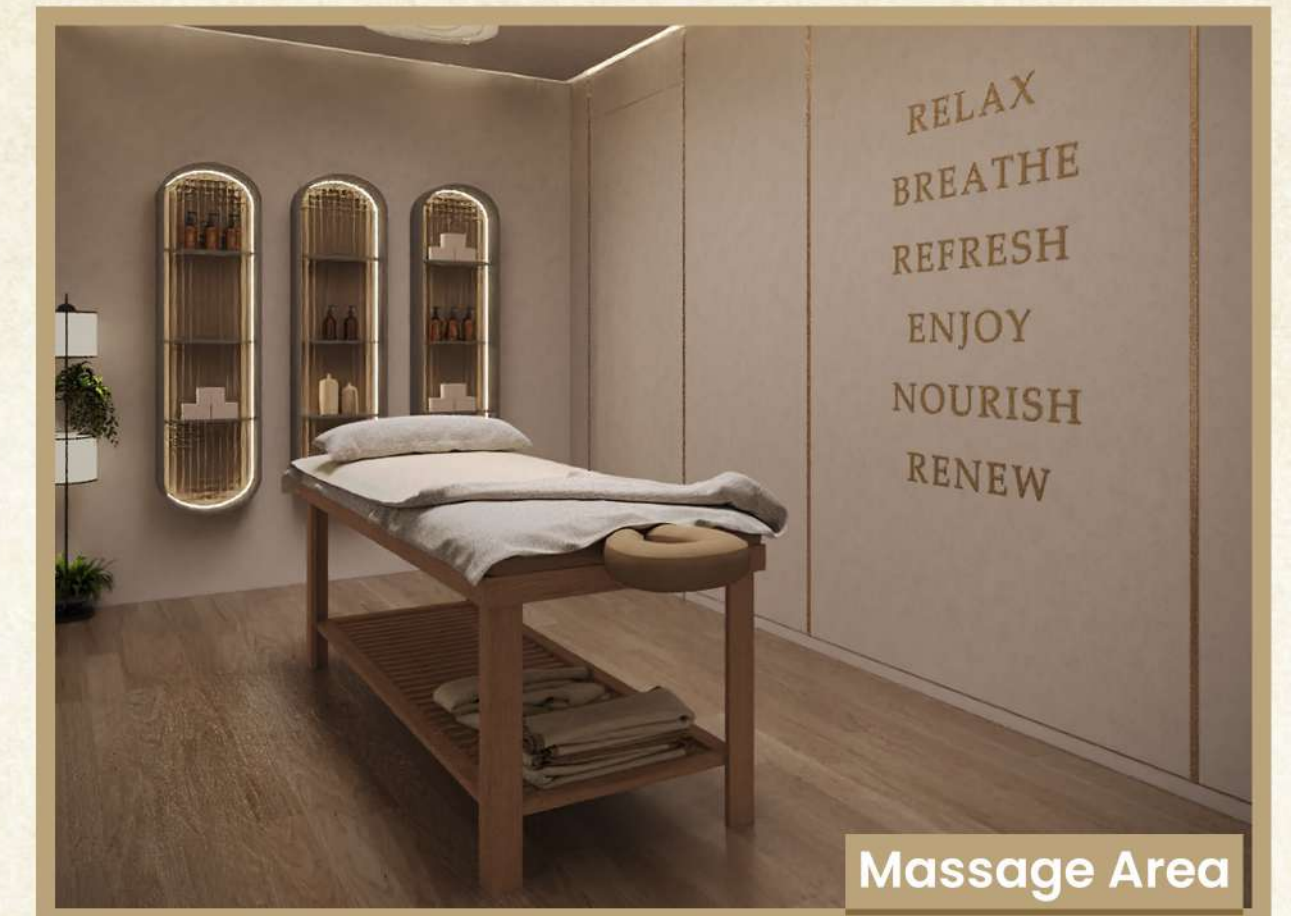
Indoor Amenities

- 1) 5 Star Lounge
- 2) 5 Star Banquet Hall
- 3) Squash
- 4) Fully Equipped Gym
- 5) Aerobics & Yoga Lounge
- 6) Indoor Heated Pool



Note: All the images of amenities are for reference purpose only.

Indoor Amenities



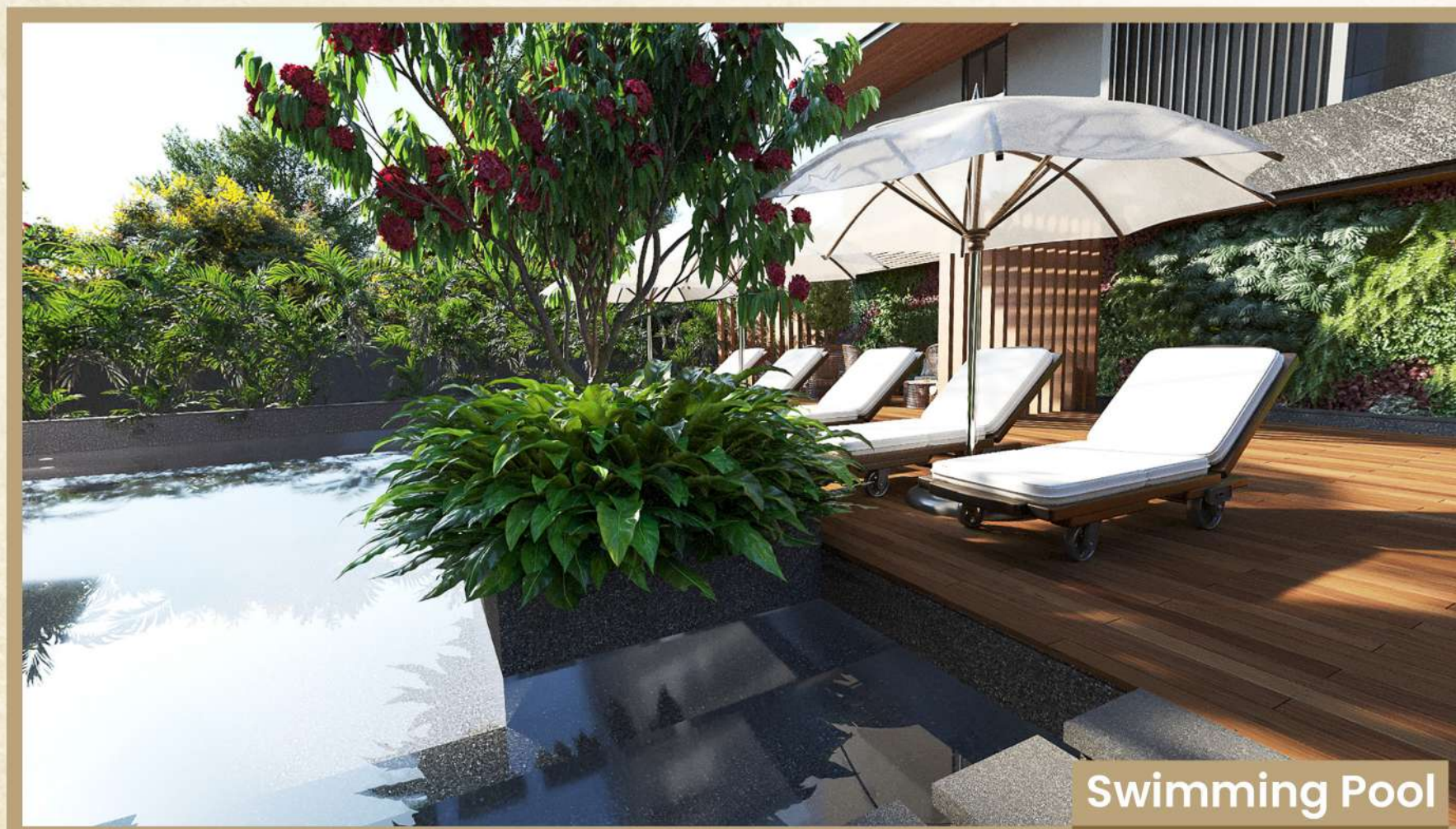
Outdoor Amenities

Lifestyle:

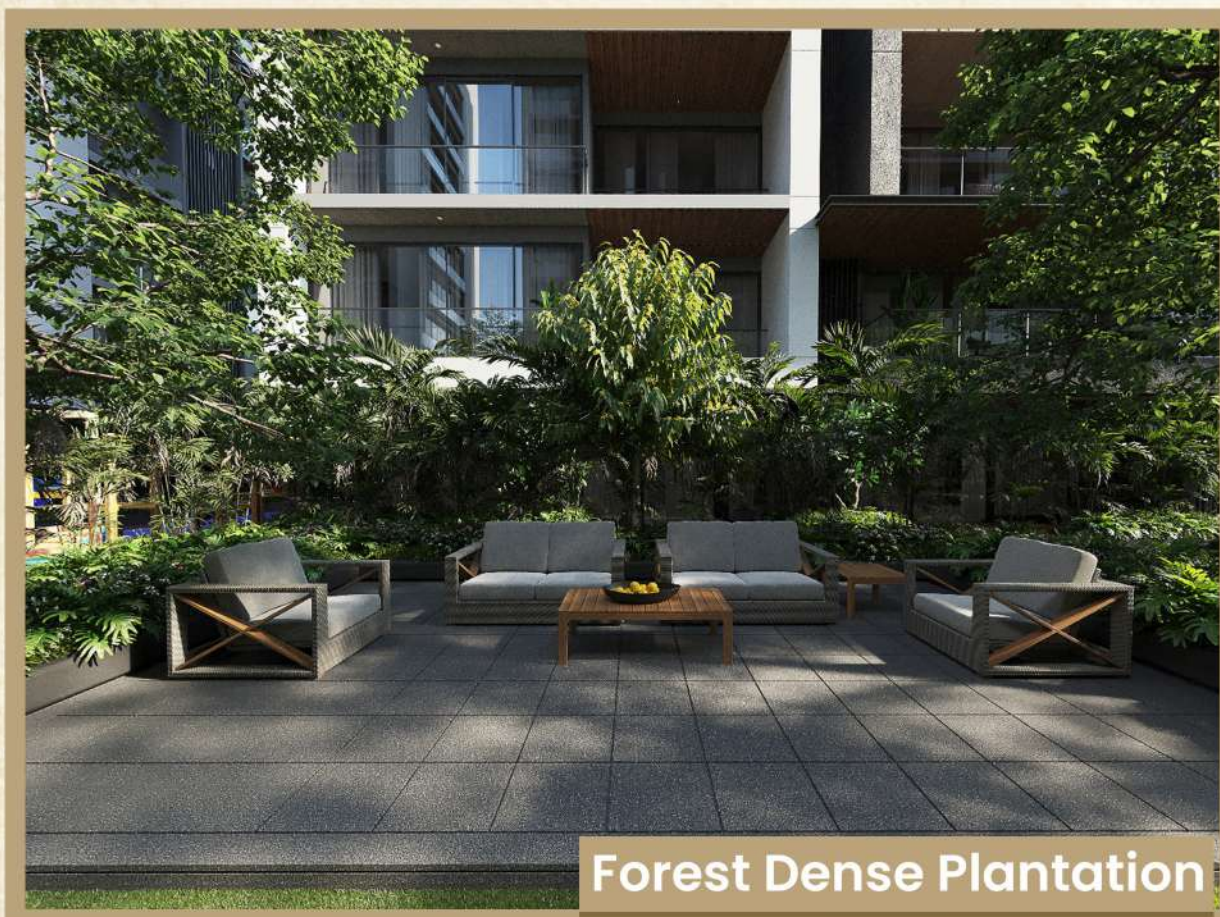
- 1) Gazebo Sitting
- 2) Indoor Waterfall
- 3) Forest Dense Plantation
- 4) Senior Citizen Area
- 5) Central Garden
- 6) Guest Rooms
- 7) Double Basements

Sports:

- 1) Swimming Pool
- 2) Badminton Court
- 3) Jogging Track



Outdoor Amenities





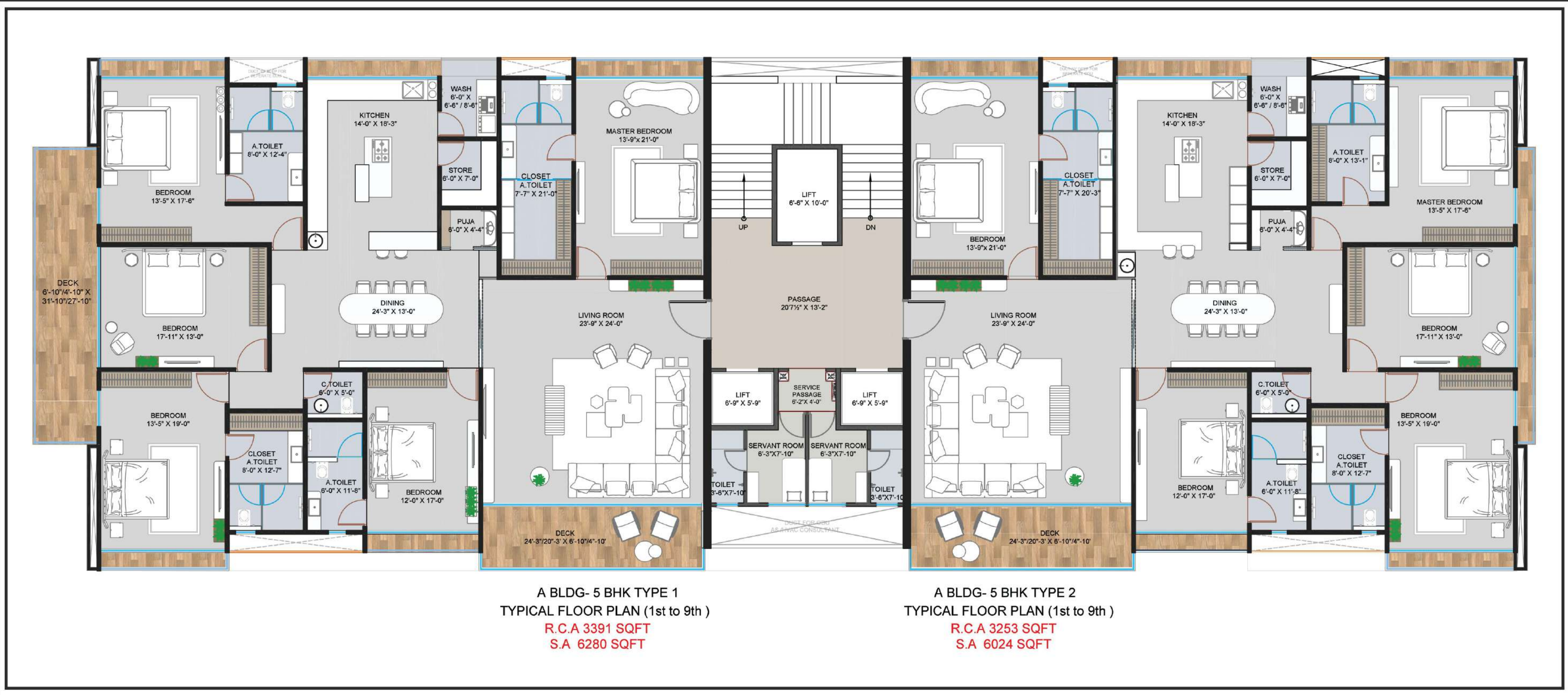
State of the Art Wellness

- 1) Steam
- 2) Sauna
- 3) Jacuzzi
- 4) Infrared Therapy
- 5) Turkish Hammam
- 6) Thermal Pool



Note: All the images of amenities are for reference purpose only.

Typical Floor Plan (1st to 9th)



BUILDING - A (5 BHK)

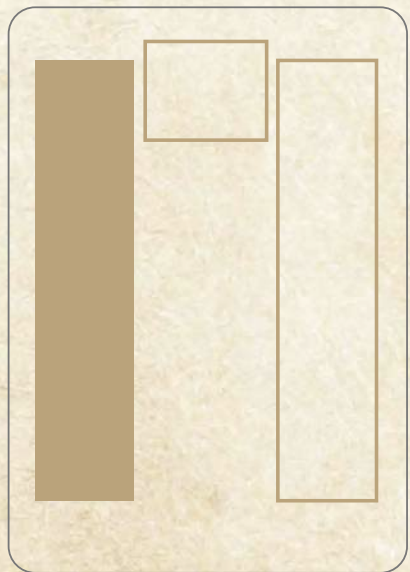
Type-1

R.C.A 3391 Sq.Ft
S.A 6280 Sq.Ft

Type-2

R.C.A 3253 Sq.Ft
S.A 6024 Sq.Ft

12 feet floor-floor height



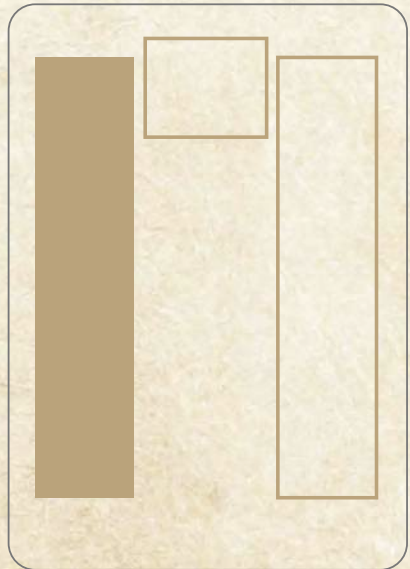
Typical Floor Plan (1st to 9th)



BUILDING - E
Unit Plan

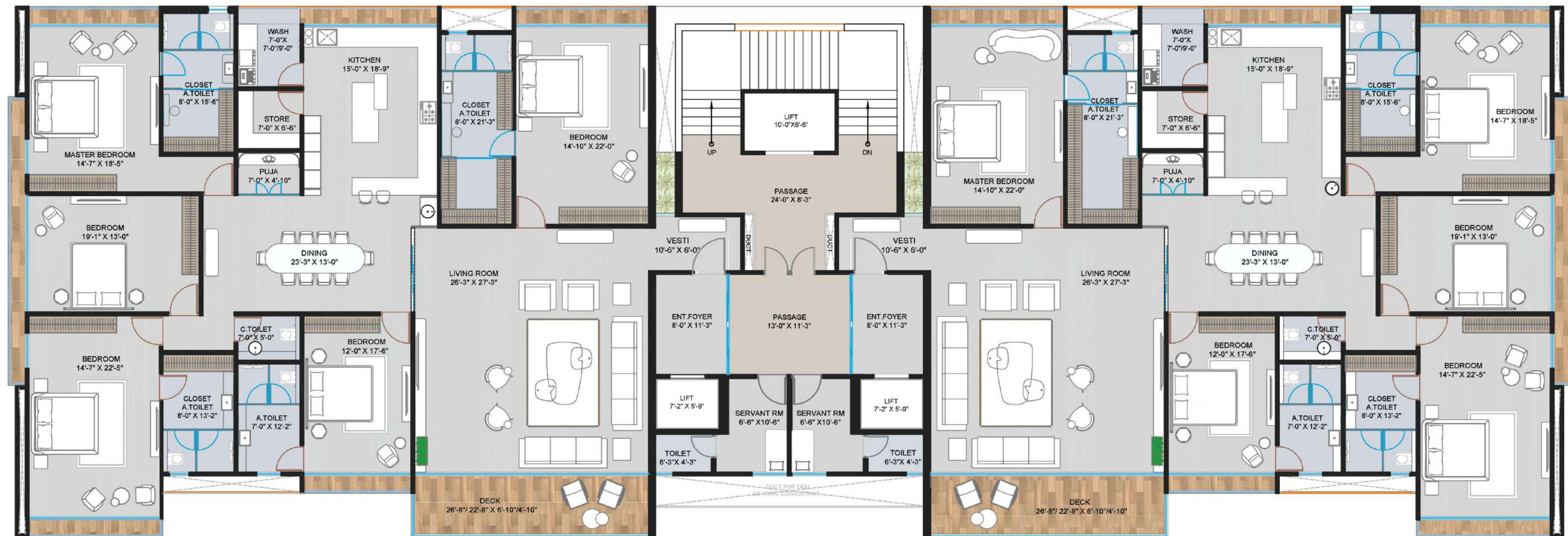
5 BHK
R.C.A 3253 Sq.Ft
S.A 6024 Sq.Ft

12 feet floor-floor height





Typical Floor Plan (1st to 9th)

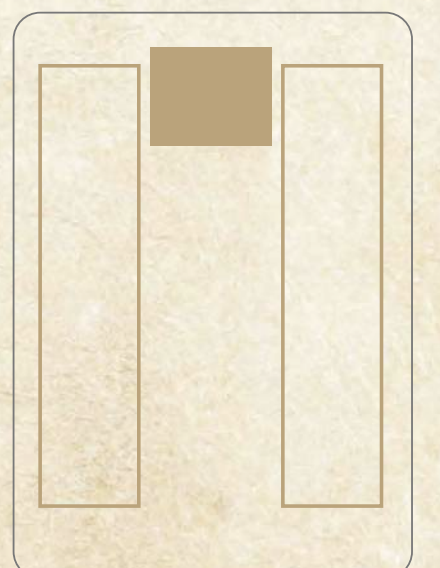


I BLDG - 5 BHK
TYPICAL FLOOR (1st to 9th)
R.C.A 3800 SQFT
S.A 7037 SQFT

BUILDING - I
Unit Plan

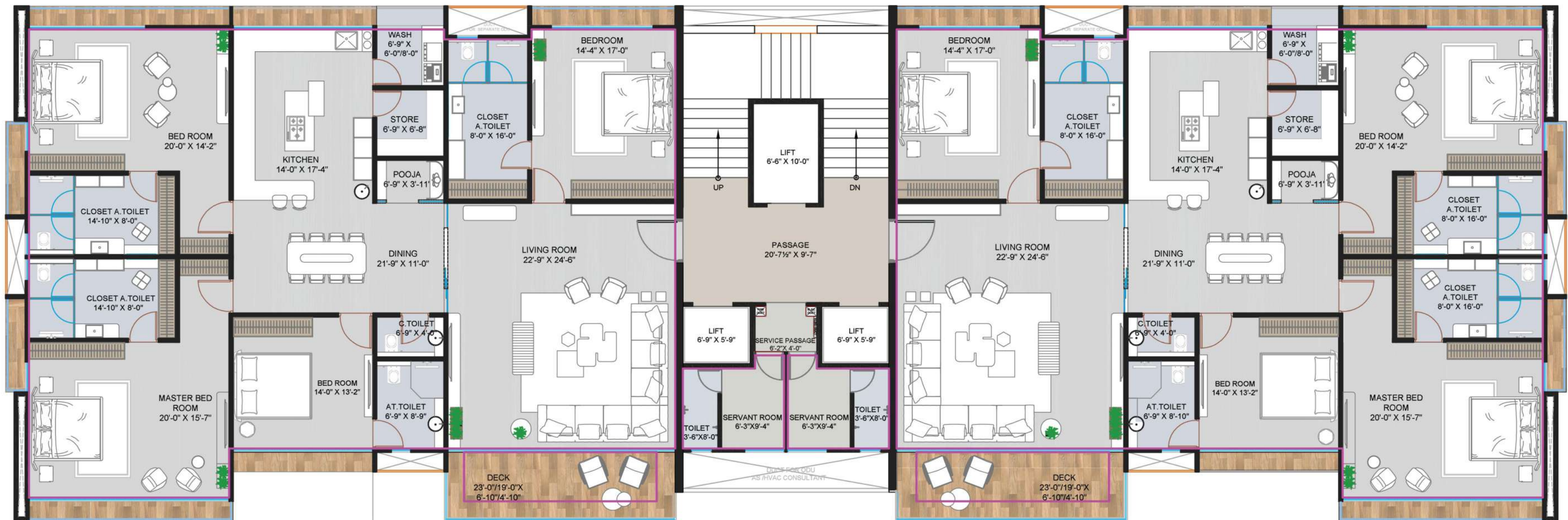
5 BHK
R.C.A 3800 Sq.Ft
S.A 7037 Sq.Ft

12 feet floor-floor height



Typical Floor Plan (1st to 9th)

North

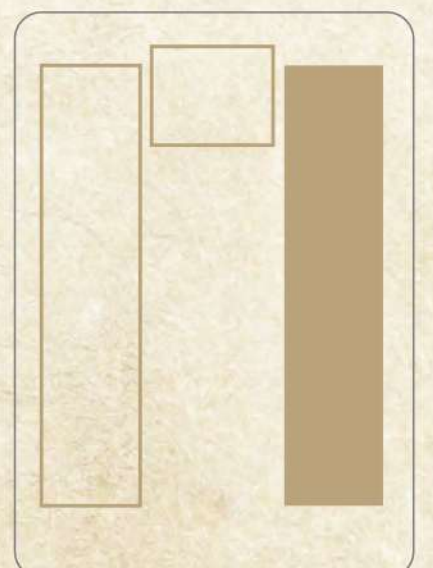


O BLDG- 4 BHK
TYPICAL FLOOR PLAN (1st to 9th)
R.C.A 2978 SQFT
S.A 5515 SQFT

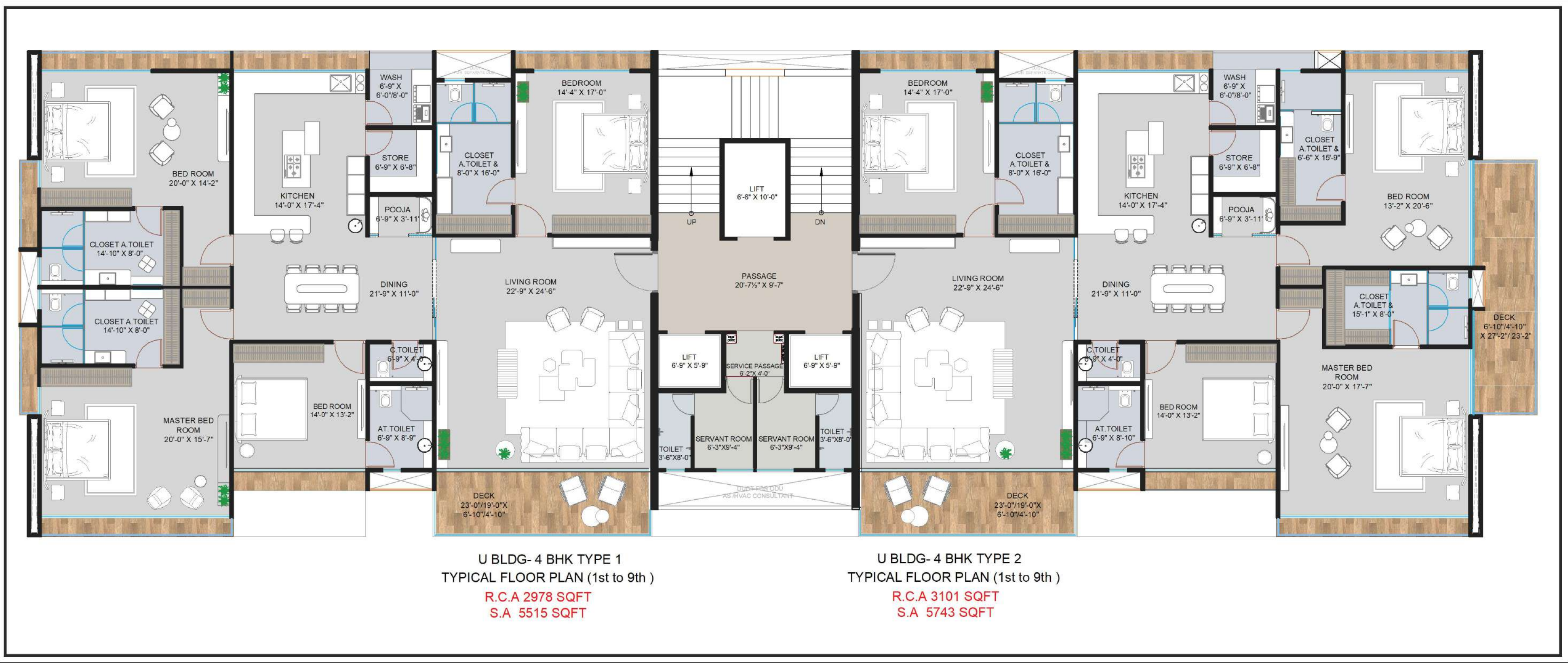
BUILDING - 0
Unit Plan

4 BHK
R.C.A 2978 Sq.Ft
S.A 5515 Sq.Ft

12 feet floor-floor height



Typical Floor Plan (1st to 9th)



BUILDING - U (4 BHK)

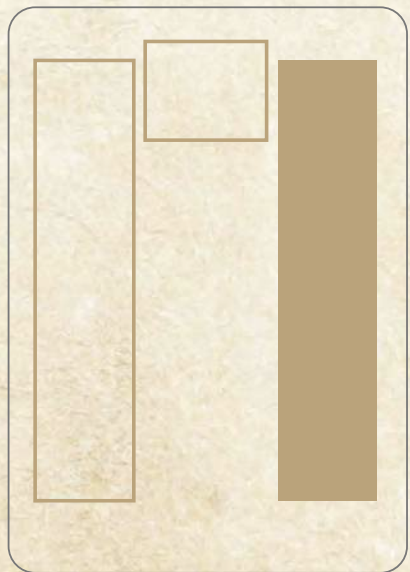
Type-1

R.C.A 2978 Sq.Ft
S.A 5515 Sq.Ft

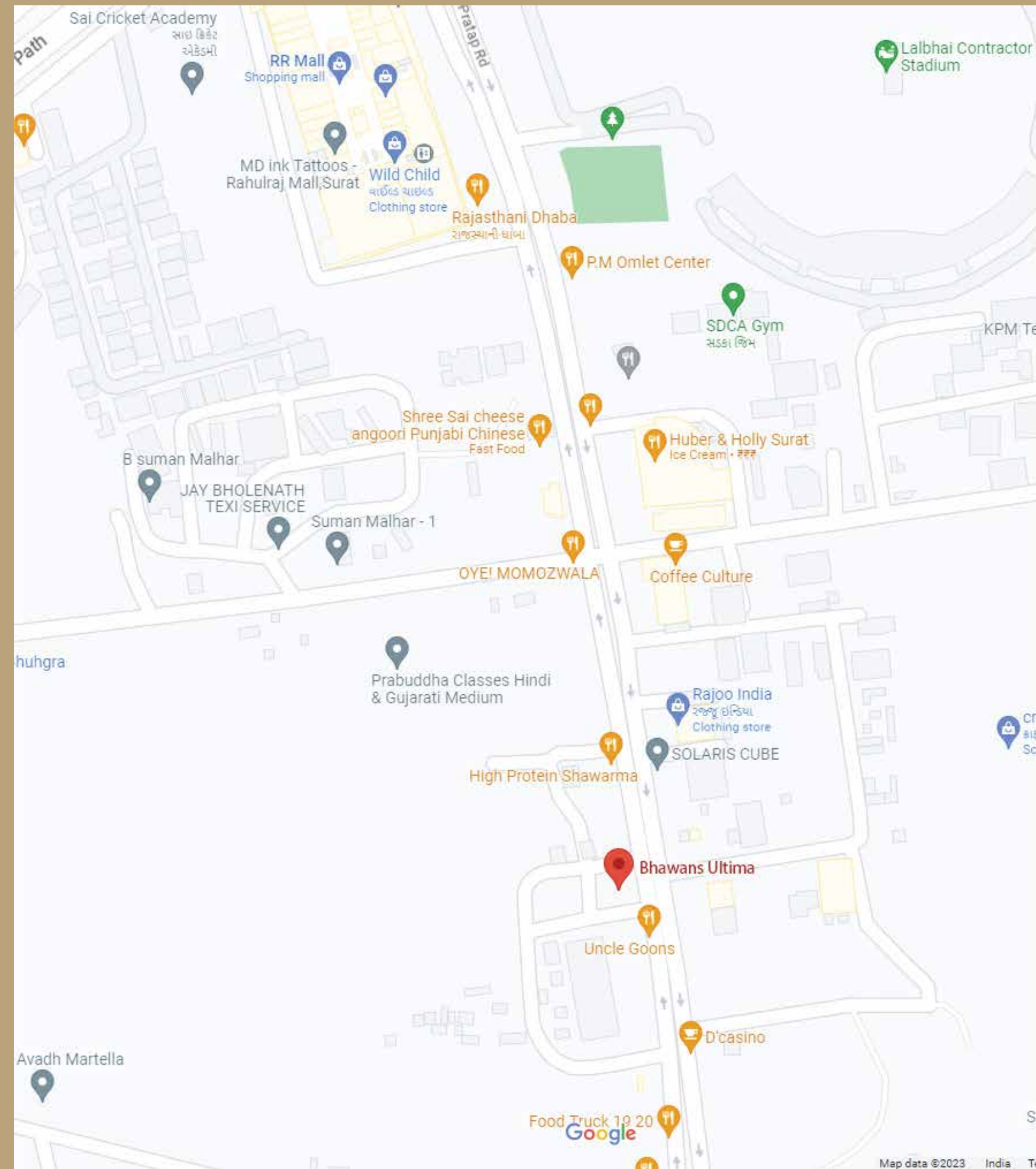
Type-2

R.C.A 3101 Sq.Ft
S.A 5743 Sq.Ft

12 feet floor-floor height



[Click here for directions](#)



Address: TP 28, in Front of Rajoo India,
Landmark Rahul Raj Mall

Commute with ease
Wherever you please

- 📍 **The Airport is 5 mins away.**
- 📍 **Railway Stations are in close proximity.**
- 📍 **Doorstep availability of every local transport facility.**

📍 **Walking Distance:**

Rahul Raj Mall, Central (Shopping Mall)

Various Convenience Stores, Pharmacies, Banks, ATMs, and Home Appliances stores

Super Markets, Car & Bike Showroom etc.

Restaurants & Cafe like Hubber & Holly Surat, Rajasthani Dhaba, Coffee Culture, Theka Coffee, etc.

📍 **At 5-20 min distance :**

Medical Emergencies and Hospitals, School, Diamond Bourse, College





Coming Soon

Visit Site office for Inquiries

Site office:- TP 28, in Front of Rajoo India,
Landmark Rahul Raj Mall, Vesu, Surat.