

THE
RISE
OF A
TEXTILE
ERA


RAGHUVIR
SCARLETT
FOR TEXTILE TYCOONS

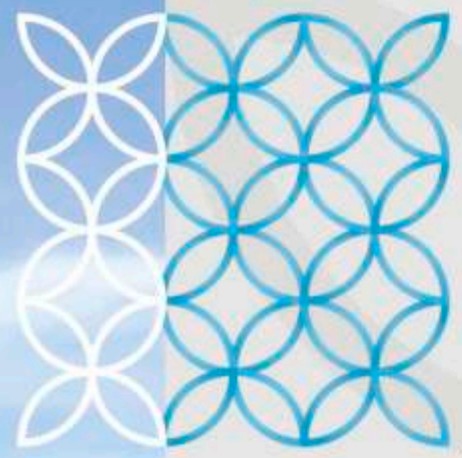


THE PROJECT

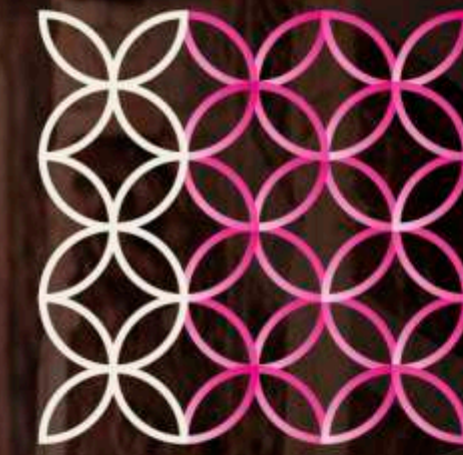
"RAGHUVIR SCARLETT" is a uniquely designed project blending with a perfect mix of elegance, contemporary architecture and fulfill the special textile needs. Just overview the project and definitely you realise the distinctive features especially for textile industry. The Project is reflection of "Silk city" Surat and in very near future it will surely become the benchmark of Textile world. A perfect place for your growing business, which give you the extra boost of innovative business ideas. In real sense Surat will get its utmost modernity with RAGHUVIR SCARLETT.



RAGHUVIR
SCARLETT
FOR TEXTILE TYCOONS



REACHING THE
NEW HEIGHTS OF
AMBITIONS.



LEAP TOWARDS
NEW EDGE
OF TEXTILE



RAGHUVIR SCARLETT

Zoya Zoya

Bridal Bridal

Sajni Sajni

RAGHUVIR SCARLETT

Riya Fashion Riya Fashion

Divya

Zoya Zoya

SCARLETT



GOODS ELEVATORS

- 44 Goods Elevators of 1.5 tonnes capacity, carrying goods directly to each house.
- One lift serving two houses and 4 extra goods lifts for emergency requirements in plaza.



PASSENGER ELEVATOR

- 13 Automatic Elevators with S.S. cabin of 15 passengers capacity.



LUXURIOUS PLAZA

- Luxurious central plaza with sitting space and artificial garden.



AMPLE PARKING

- Double level basement parking facilities.



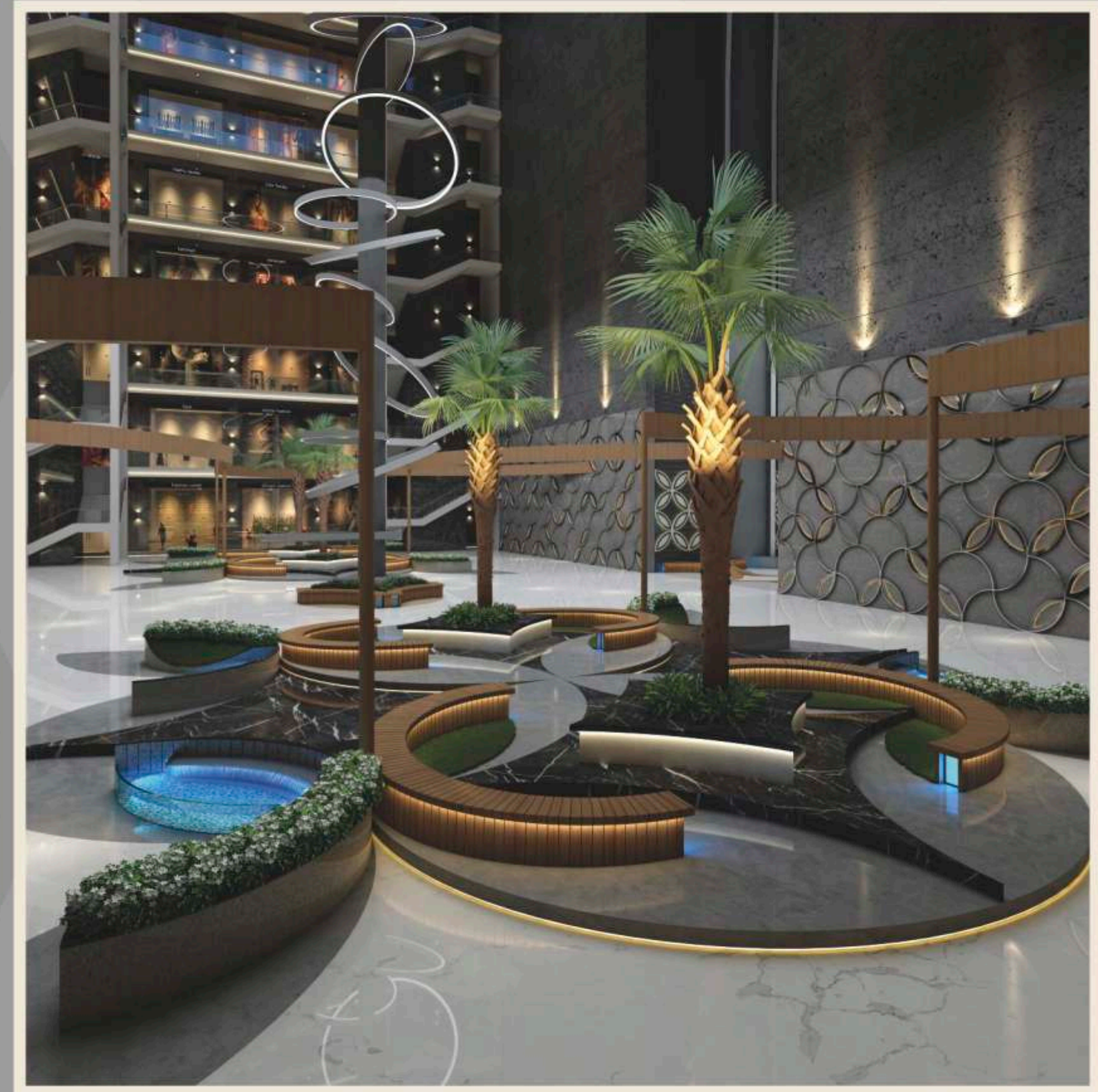
ENTRANCE GATE, ROAD & COMPOUND

- Separate entrance and exit gate on =100 ft & = 80 ft. wide T.P. road with security cabin.
- Paver Block/Trimix RCC road with street lights.
- A well structured, Compound wall would be raised with decorative lighting.
- Campus being located on a two road corner for better connectivity.



GENERATOR FACILITIES

- Emergency power backup for goods lift, Passengers lift, Passage lights and 8 normal points in each house.





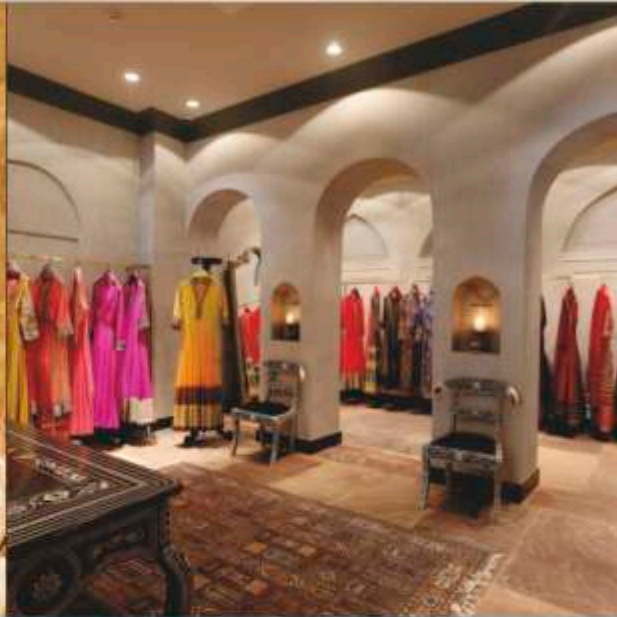
MOST EFFECTIVE
WAY TO ANNOUNCE
YOUR BRAND.



KEEP YOUR
BUSINESS
CLOSE TO
THE WORLD



EMERGING
OPPORTUNITY
ENCOURAGING
ENVIRONMENT



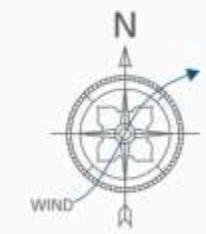


 FROM
OPPORTUNITY
TO ADVANTAGE



A GOOD
OPPORTUNITY
DOESN'T COME AROUND VERY OFTEN,
SO WHEN IT DOES, MAKE SURE
YOU GRAB IT WITH BOTH HANDS!

GROUND FLOOR LAYOUT PLAN

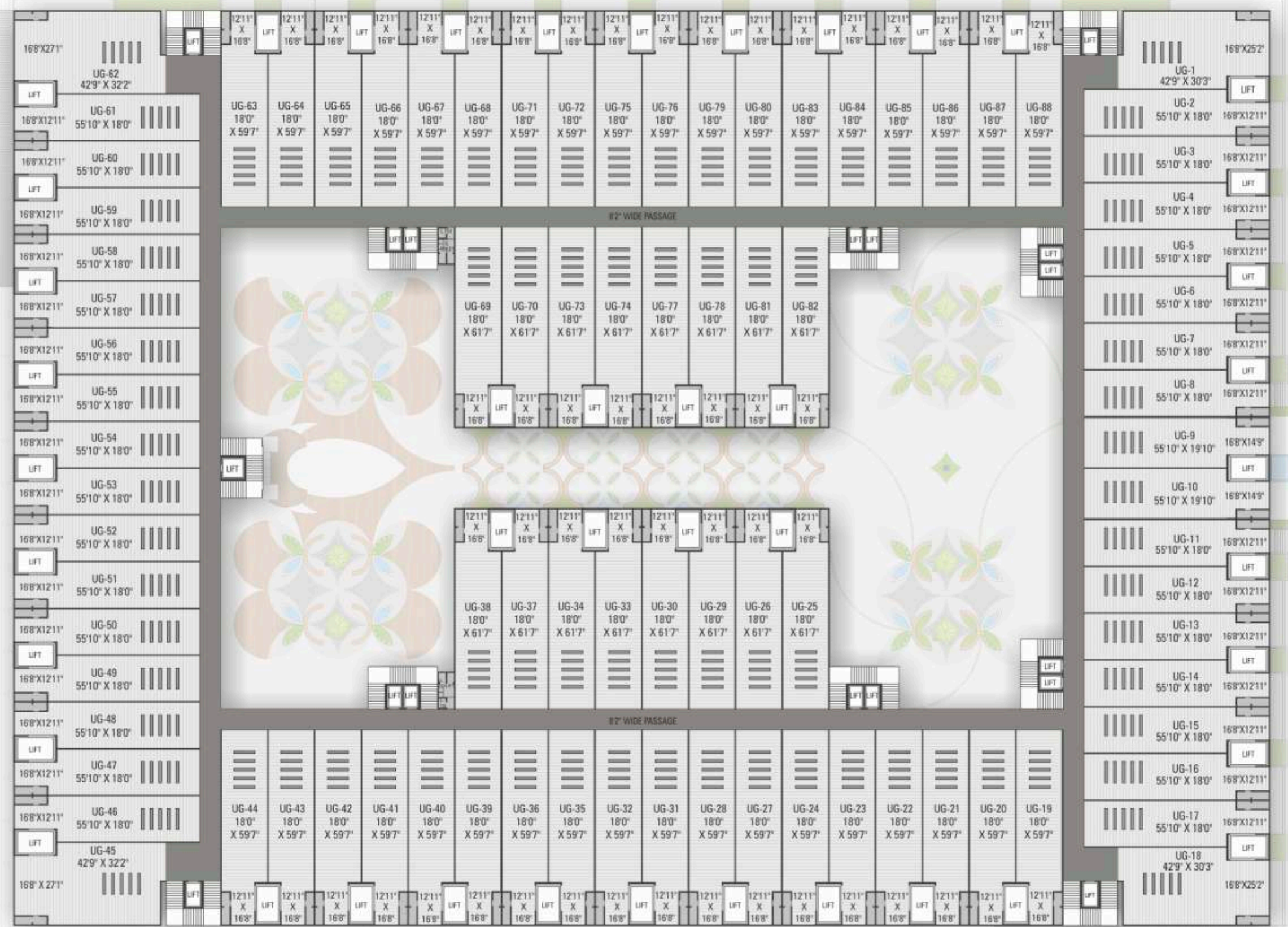


GROUND FLOOR AREA

Textile House	Carpet area (Sq.ft)
G-1 & G-18	1678
G-2 to G-8, G-11 to G-17,	1222
G-19 to G-24, G-27, G-28, G-31, G-32, G-35, G-36, G-39 to G-44,	1287.5
G-25, G-26, G-29, G-30, G-33, G-34, G-37, G-38, G-69, G-70, G-73, G-74, G-77, G-78, G-81, G-82	1322.5
G-45	1785.5
G-46 to G-61	1220
G-63, G-64, G-66 to G-68, G-71, G-72, G-75, G-76, G-79, G-80, G-83 to G-88	1289
G-62	1789.5

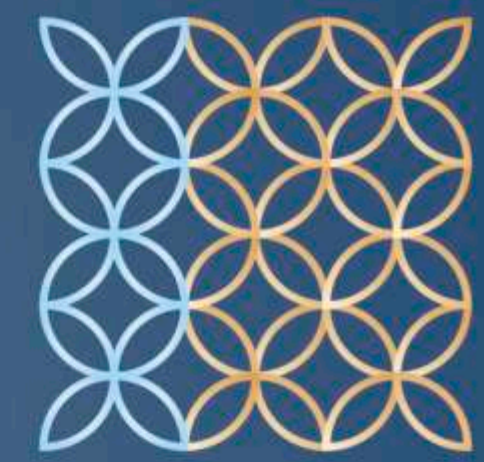


UG, 1ST TO 7TH FLOOR PLAN



UPPER GROUND & 1ST TO 7TH FLOOR AREA

Textile House	Carpet area (Sq.ft)
UG-1 & UG-18	1675
UG-2 to UG-8, UG-11 to UG-17, UG-46 to UG-61	1220
UG-9 & UG-10	1355
UG-19 to UG-24, UG-27, UG-28, UG-31, UG-32, UG-35, UG-36, UG-39 to UG-44, UG-63 to UG-68, UG-71, UG-72, UG-75, UG-76, UG-79, UG-80, UG-83 to UG-88	1287.5
UG-25, UG-26, UG-29, UG-30, UG-33, UG-34, UG-37, UG-38, UG-69, UG-70, UG-73, UG-74, UG-77, UG-78, UG-81, UG-82	1322.5
UG-45 & UG-62	1785.5



PROFESSIONALISM
PERSONIFIED





RAGHUVIR
SCARLETT
FOR TEXTILE TYCOONS



A BOUQUET OF
SUCCESS
AND PROSPERITY.



SALIENT FEATURE

FLOORING

- Each house will have durable vitrified / twincharge or equivalent tiles flooring.

HOUSE SHUTTER

- Automatic remote operated rolling shutters.

WINDOWS

- Powder coated/Anodized aluminium section window.
- Well polished granite window sills.
- Prerequisite of glass in all windows.

PLUMBING

- Branded I.S.I. CPVC & UPVC plumbing & drainage piping.

PANTRY AND WASHROOM FACILITIES

- Attached Toilets with Pantry for each textile house.

ELECTRIFICATION

- Modular switches.
- Concealed circuit wiring.
- Sufficient electric points in all house.
- M.C.B in individual house for safety.

WATER SUPPLY

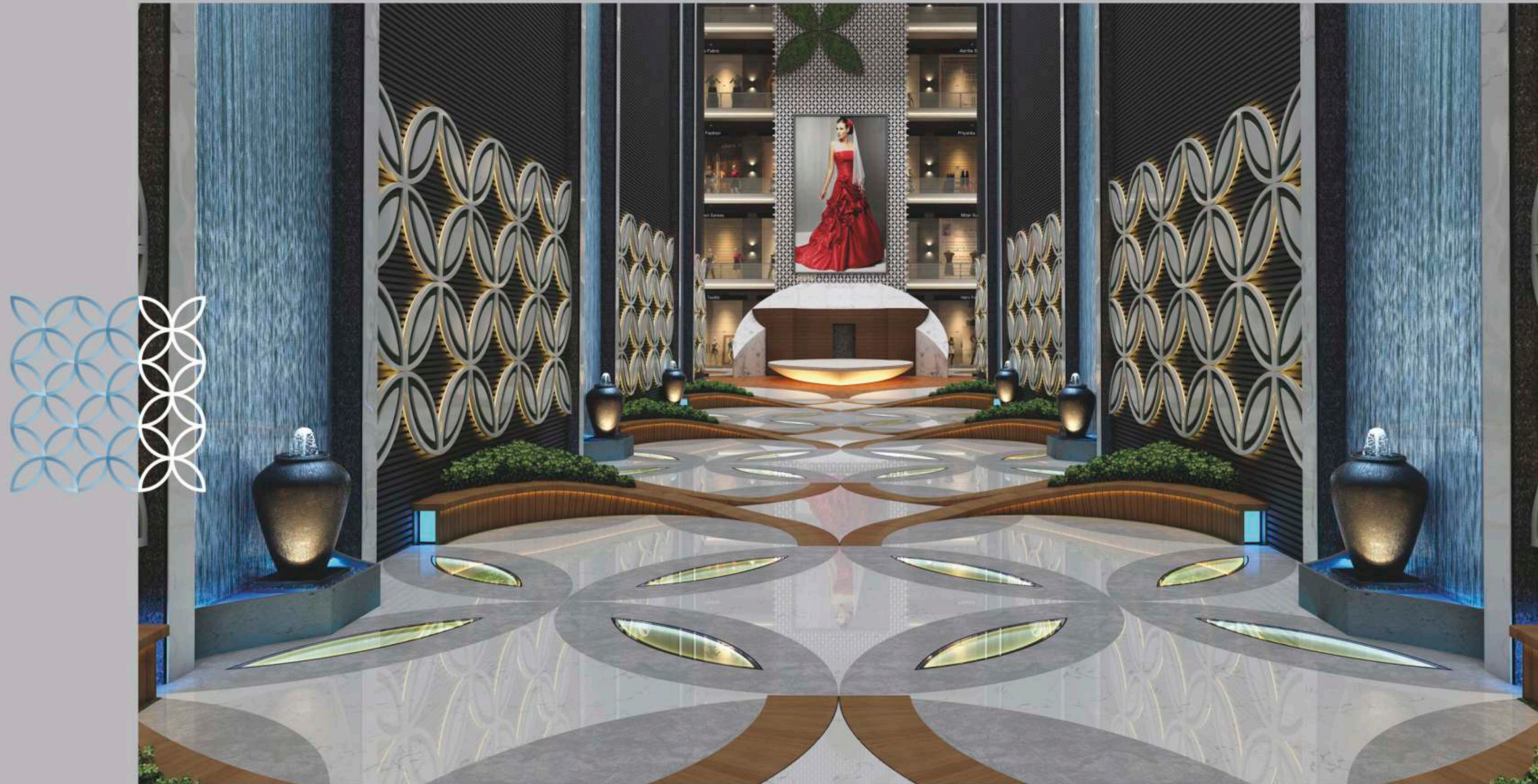
- Underground and overhead tanks provided for constant water supply.

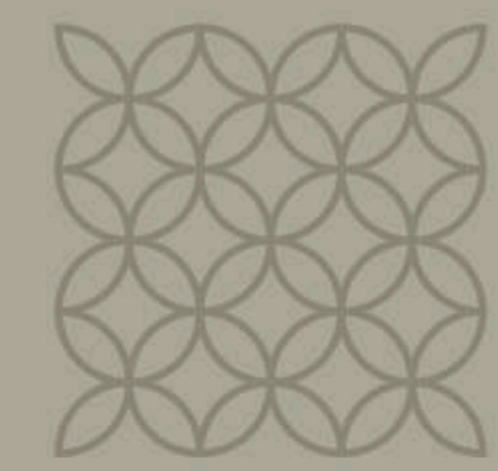
PEST CONTROL

- The campus would be treated with an anti-termite treatment as an added measure.

COMMON WASHROOM FACILITIES

- Each floors to have a common Washroom facility.





MOVE TOWARDS
FAVORABLE
DESTINATION



SECURE STRUCTURE

TITLE

- Loanable clear title.
- Registered sale deed for individual members.
- Building Use Certificate.
- Airport N.O.C.
- Lift Licence.
- Fire N.O.C.
- Environmental Clearance Certificate.

STRUCTURAL DESIGN

- Considering last earth quake.

SECURITY

- Entire campus and passage will be covered by C.C.T.V. Camera.

FIRE SAFETY

- Fire safety provision as per authority norms.

MAXIMIZING
POTENTIAL,
CREATING GREAT
WORK PLACES
FOR ALL





SHYAM SANGINI
TEXTILE MARKET

TO KADODARA



100 FT. WIDE ROAD



LANDMARK
EMPIRE

200 FT. WIDE ROAD

RAGHUVIR
BUSINESS
EMPIRE

ROAD TO VESU

80 FT. WIDE ROAD



NEW BOMBAY MARKET

NSTM MARKET



PRIME LOCATION

Scarlett is conveniently located at Textile market area of Saroli. It is very well connected by Surat Kadodara Road & easily approachable from 100 ft. road.

SAHARA DARWAJA

Site Address

Raghuvir Scarlett, Nr. DMD Logistic Park, Saroli, Surat.

Project by



An ISO 9001 : 2008 Certified Company

Corporate Office

Raghuvir House, Nariman Shopping,
City Light, Surat.
Cell : 9638629131 | 8866790441
9925029912

www.raghuvirdevelopers.com

Follow us on



@ Raghuvir Builders

YouTube Raghuvir Developers

Download Now

Disclaimer:

• Any amendments in rules & regulations by any authority will be bound to all members. • All expenses of legal document, extra stamp duty (if any), service tax, VAT,GST, Society maintenance, Safety Grill, incidental charges (drainage, water supply, IC, etc.), SMC tax, Gas connection and Electric connection (GEB charges, cabling & it's labour charge and other related expense) will be borne by members. • External & internal changes shall not be allowed. • Before possession, execution of sale deed is compulsory. • Members are bound to pay installments regularly & irregularity in payment may cause cancellation of booking. • Developers reserves right of making any changes in the scheme & it shall be bound to all members. • This booklet is only for private circulation and for general information to the members & shall not form a part of any agreement. • It can be changed without prior notice. • There may be difference in previous and recent brochure in manner of matter and content part in that cases recent brochure should be considered. • The interior design/ furniture work etc. shown in the brochure is just for the purpose of presentation/explanation to the members. It is not part of the standard specification, as unit is sold without internal furniture. • The interior design/ furniture work / Lighting / Plantation / Architectural Presentation etc. shown in the brochure is just for the purpose of presentation/explanation to the members. It is not part of the standard specification of the project.



An ISO 9001 : 2008 Certified Company