

Developer

Shah & Sanghavi Developers LLP.  
101, SNS Square,  
Above State Bank of India,  
Vesu Main Road, Surat.

✉ sales@snsproperties.in  
Sales Inquiry : +91 99790 20206



BEST WAY TO **SUCCESS**

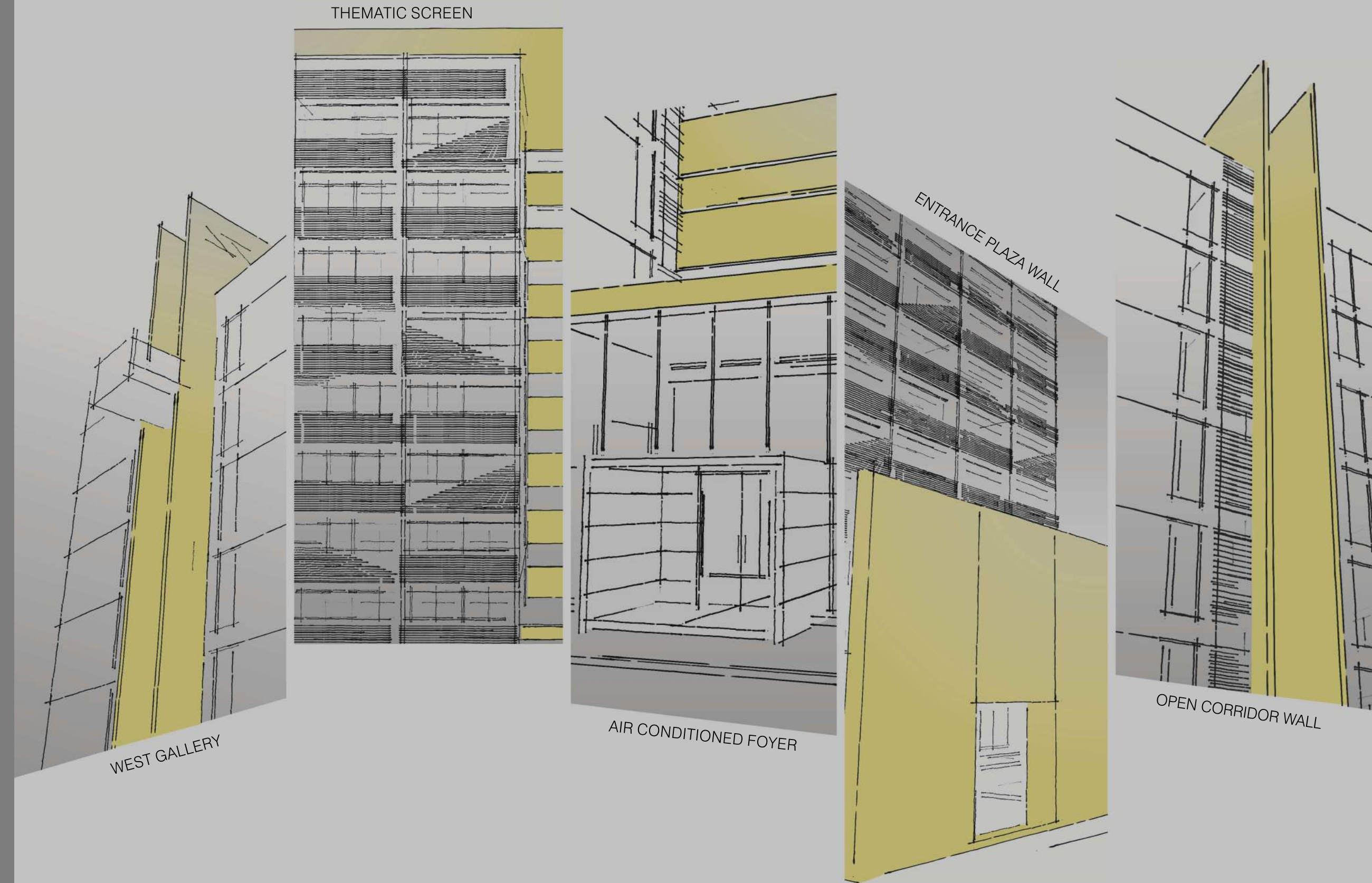
**SNS**  
**ARISTA**

SHOWROOMS  
& OFFICES

# A NEW AGE BUSINESS PLACE

Success demands sincere hard work. It demands right strategies. A vision to grow. And a place that's best for business. Here's that place, called SNS Arista. SNS Arista is not just a commercial space, rather it is a new age business place set in modern environs to provide right kind of atmosphere to today's thriving small and medium enterprises.

SNS  
ARISTA



# WHERE MEETINGS CAN GET INTERESTING

When things get serious within the four walls, the best remedy is to get out in the open. Sometimes taking a break from formal routine can charge up your and your associates' energy. The West Gallery at SNS Arista shall do that wonder of re-energizing people at those boring Monday meetings.



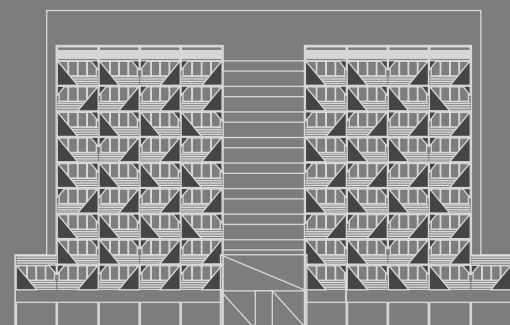
Corporate Office



Showrooms



Stock Exchange



# WHERE DESIGN HAS A **THEME**

SNS Arista looks appealing with its thematic screen which demonstrates the edifice as a fine blend of architectural and structural excellence. The showrooms and offices are designed and placed thoughtfully so as to make optimum use of the space while fulfilling the needs of the businesses parked here.



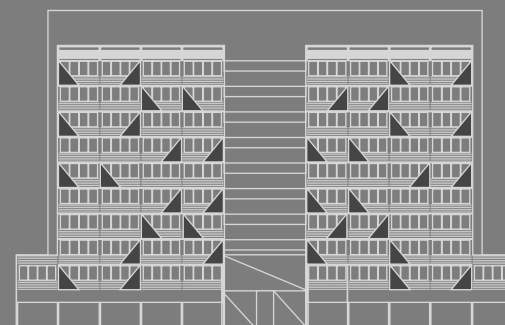
Banking



Advocate



Insurance



# WHERE FIRST **IMPRESSION** LEAVES IMPACT

First impression definitely matters when you are expecting someone important at your work place. The address of your business speaks volumes about you as an entrepreneur. SNS Arista welcomes your clients/customers through a well designed, air-conditioned foyer so that visitors feel comfortable and at ease.



Telecom



Information  
Technology



Travels



# WHERE **AESTHETICS** ARE SOPHISTICATED

SNS Arista stands elegantly tall with its grand entrance plaza wall in the front that gives the entire premises a distinguished look and persona meeting the aesthetics standards of a corporate building.



Cafe



Institute



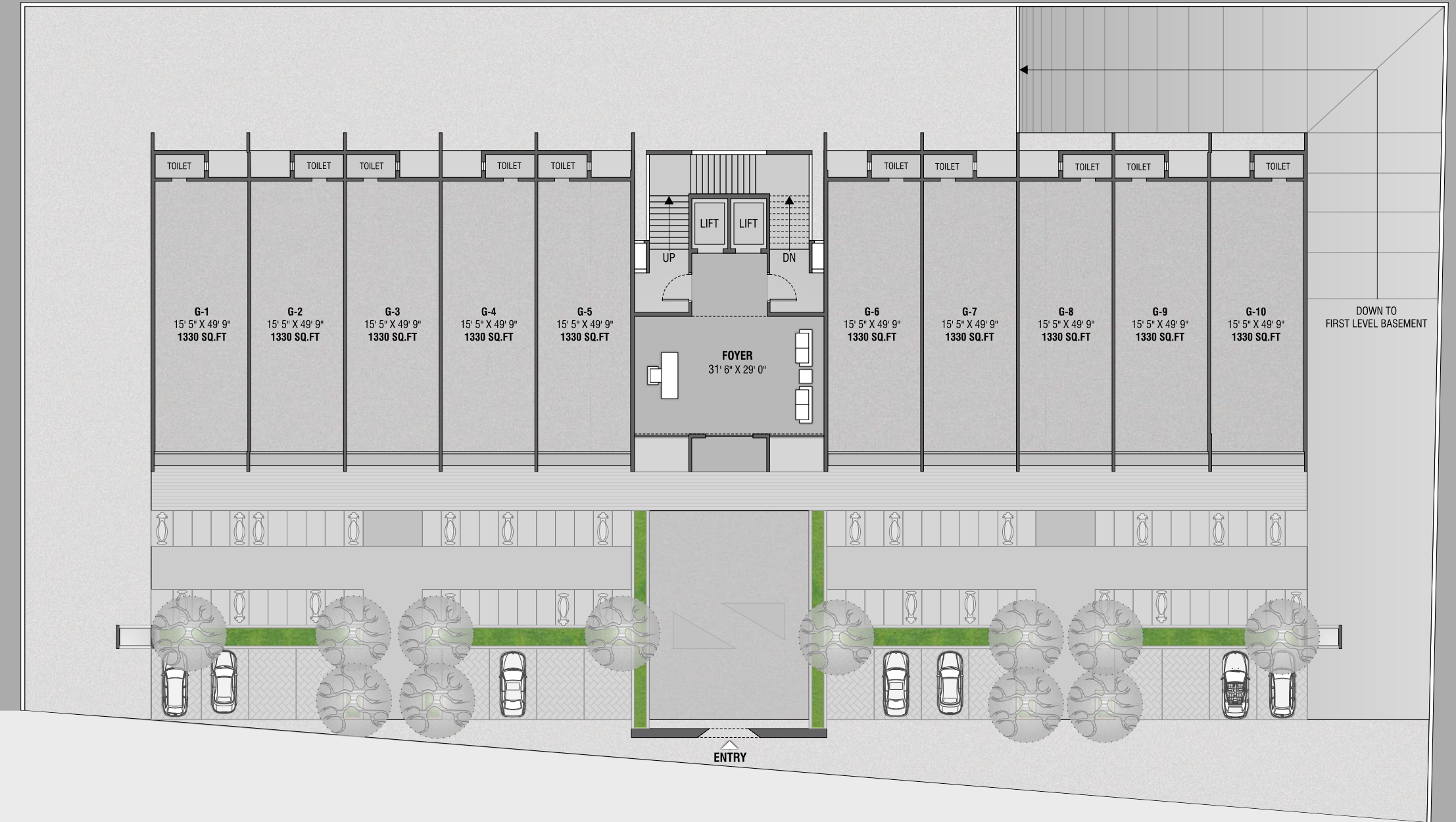
Call Center



# 1<sup>st</sup> & 2<sup>nd</sup> BASEMENT PLAN



# GROUND FLOOR PLAN



60' WIDE ROAD

# 1<sup>st</sup> FLOOR PLAN



# 2<sup>nd</sup> to 9<sup>th</sup> FLOOR PLAN







VIBRANT. INSPIRING. FUTURISTIC.





## SPECIFICATIONS

### EXTERNAL FACADE

- Combination of Aluminum / Glass windows, Aluminum louvers for Sun Protection.
- Premium quality crushed stone plaster on all external surfaces.
- All Shops with double height glass-aluminum frame

### INTERNAL AREAS

- Foyer, Lift lobby, Sky cafeteria, sky lounge flooring and wall cladding with marble / vitrified tiles / granite. Ceilings in gypsum finished with premium quality acrylic paint.
- Corridor floor and walls clad with premium quality vitrified tiles, ceilings in gypsum finished with premium quality acrylic paint.
- Offices/shops flooring in mirror finished vitrified tiles, walls finished with emulsion paint. Window jambs in granite, aluminum anodized sliding windows. All doors laminated both sides.
- Two level basement exclusively for parking purpose with sign age system for smooth vehicular movement.

### ELECTRICAL AND MECHANICAL PROVISIONS

- Individual distribution board, concealed copper wiring, ceiling mounted fluorescent lighting in all shops and offices.
- Wall mounted florescent tubes, high speed internet, cable television, radio antenna in all offices and shops
- Full capacity stand-by generator to supply power to entire complex in event of power failure.
- Dedicated meter room.
- Split air-conditioning system in each office with adequate provision for outdoor unit
- Foyer, sky lounge air-conditioned.
- High speed automatic lift.
- Fire fighting sprinkler system in all common areas of the building including corridors on all floors.

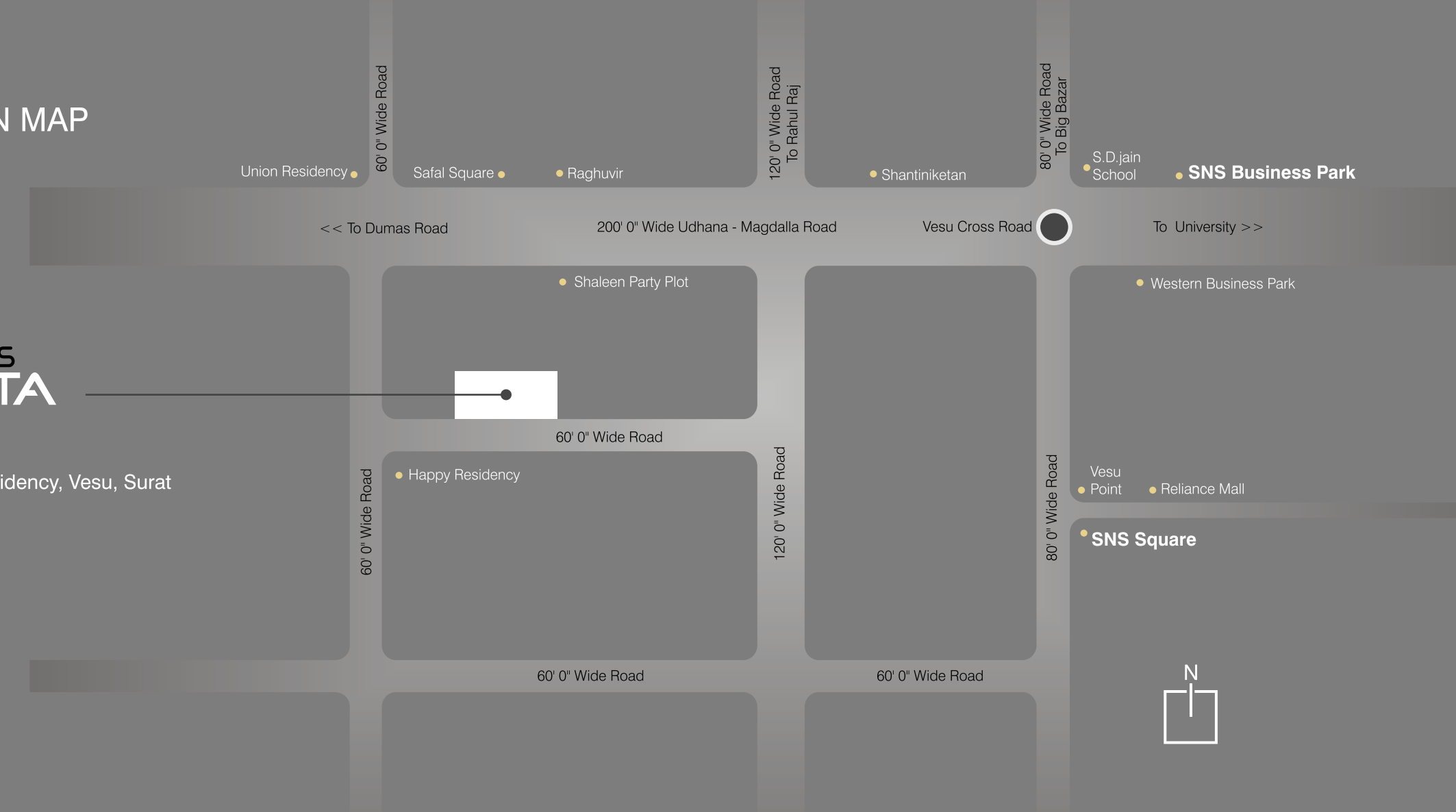
### TERRACE GARDEN

- common terrace equipped with sky cafeteria for in house refreshments, sky lounge (3 Nos.) for informal meetings suitable for about 10 persons, not to mention breathtaking city view and the ambience

## LOCATION MAP

### SNS ARISTA

Site Address :  
Opp. Happy Residency, Vesu, Surat



Architect  
Design Module  
Ahmedabad

Landscape Architect  
Dhaval Makhmalwala  
Ahmedabad

Structure Consultant  
Sarjan Consultant  
Ahmadabad.

Utility Consultant  
Vraj Sanitation  
Baroda

Electrical Consultant  
Excellent energy Consultant  
Surat

### DISCLAIMER

• Dimensions are shown for indication, subject to change • all right reserved by developer to amend in plan, elevations or any details as may be required • Anything shown in this brochure are indicative and cannot be a part of agreement • Internal changes shall not be permitted on elevation wall, grill, external color and in common spaces • Furniture and fixtures shown in layout plan area for indication purpose only • Legal charges, stamp duties, registration fees torrent, water, drainage and society maintenance etc. will be charge separately • If any changes in rules & regulation at SMC or government will be bound to all the members.

Member  
**CREDAI**  
SURAT