



**COSMOS**  
THE CIVILIZED UNIVERSE



## POSSIBILITIES GALORE



At DMD, possibilities galore and our philosophy revolves around this. Each opportunity is a new possibility here.

**Practical approach**, meticulous planning, **new age designing**, innovative standards and **technical brilliance** remain key features that reflects in any of our projects.

It's unsurpassed quality and enduring strength makes DMD **outstanding in the construction industry**.

In addition to this, a **perfect blend of quality and ethics** make DMD a **wise choice** for the discerning.

DMD is **one among the few** privileged real estate companies **in Gujarat** that owe an **in-house construction team led by experts**.

With **more than 50%** of the workforce being **engineers** and with an **average age of 33 years**, the group boasts of a **young and technically strong team**.

With commendable different categories of construction to its credit over a decade DMD has emerged as a **group to reckon with in realty**.





## AMENITIES



OUT SIDE PLAY AREA



INDOOR GAMES



CHILDREN PLAY AREA



GYM



BOX CRICKET



GAZEBO



VOLLEYBALL COURT



GARDEN

## SPECIFICATIONS

### Flooring

4x4 Tiles of Italian Series

### Bathroom

4x2 Glazed Tiles

### Paint

Acrylic colour on exterior surfaces and wall putty on internal walls

### CP Fitting

Hindware, Cera, Jaquar or equivalent fittings in all bathrooms and toilets

### Door

Decorative Main Door and other Flush Doors

### Windows

Anodized aluminum section windows

### Staircase

Granite stone flooring on staircase and landing

### Railing

SS and glass railing

### Electricity

Sufficient point in concealed wiring with ISI standard switches

### Power

GEB power supply & generator backup

### Elevator

Two lifts with 10 passengers capacity in each building

### Water supply

SMC water supply and Under ground & Over head water tank

### Parking

One allotted car parking for each flat

### Fire

Fire safety systems with sprinkler





 EVENING GARDEN VIEW



 LANDSCAPE GARDEN & GAZEBO AREA

 LANDSCAPE GARDEN & FOUNTAINS

 BIRD EYE VIEW





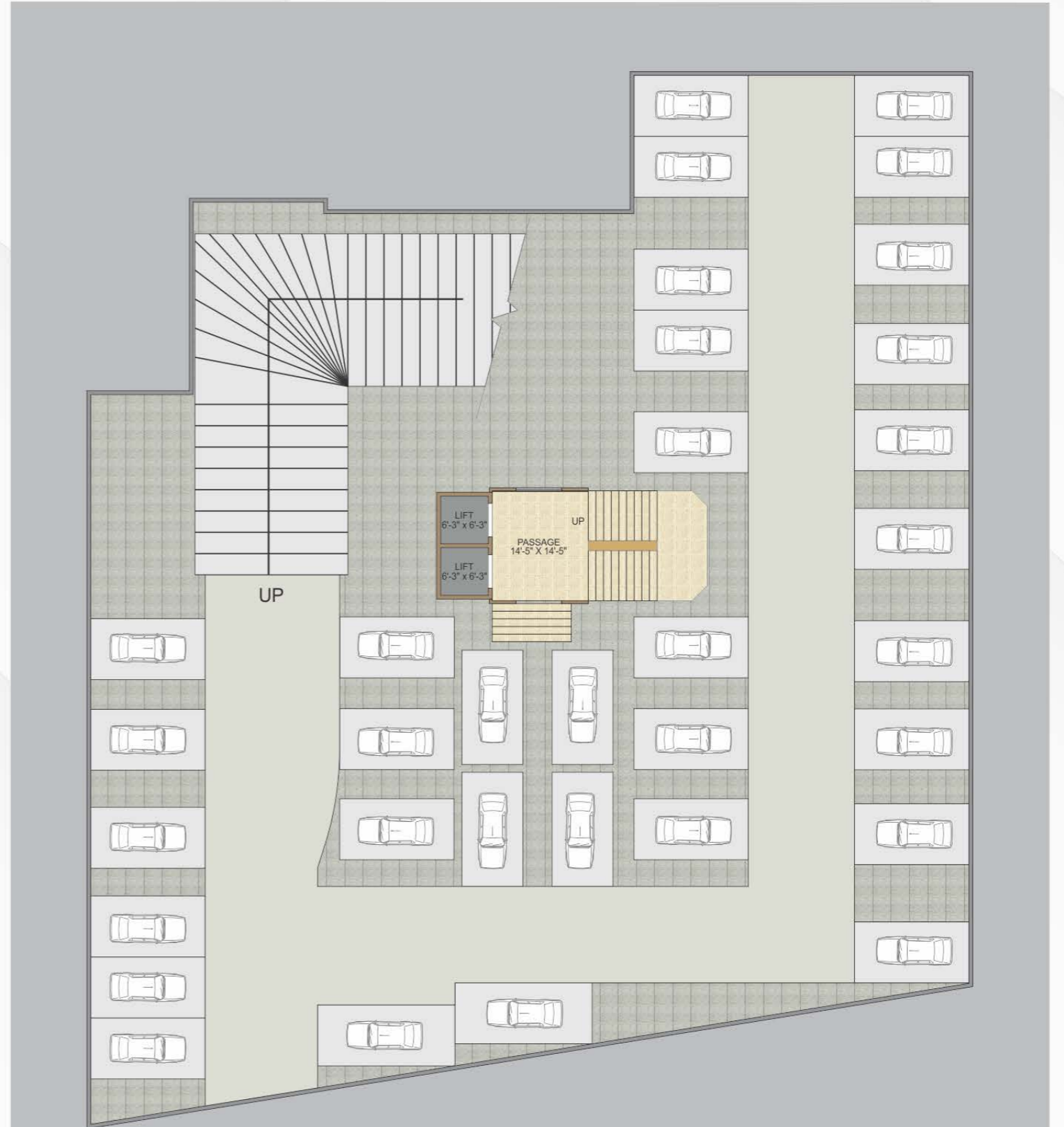
 VOLLEYBALL COURT



 BOX CRICKET



BASEMENT PLAN



WAY TO SHAHID SMARAK GARDEN

36.00 MT. WIDE T.P.S. ROAD



# GROUND FLOOR PLAN



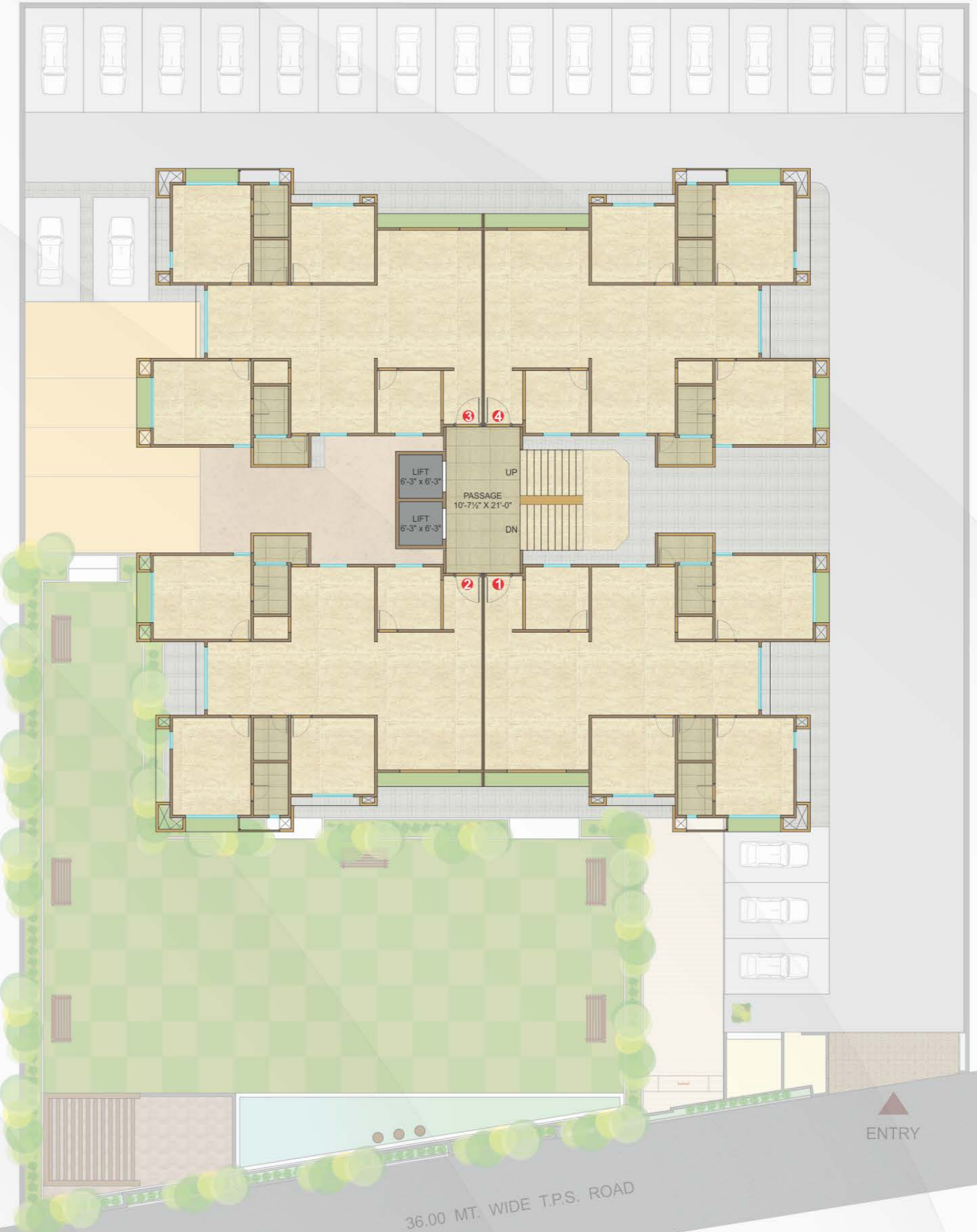
SHAHID SMARAK GARDEN



# TYPICAL FLOOR PLAN



SHAHID SMARAK GARDEN





# UNIT PLAN



# ISOMETRIC VIEW



## FLOOR PLAN

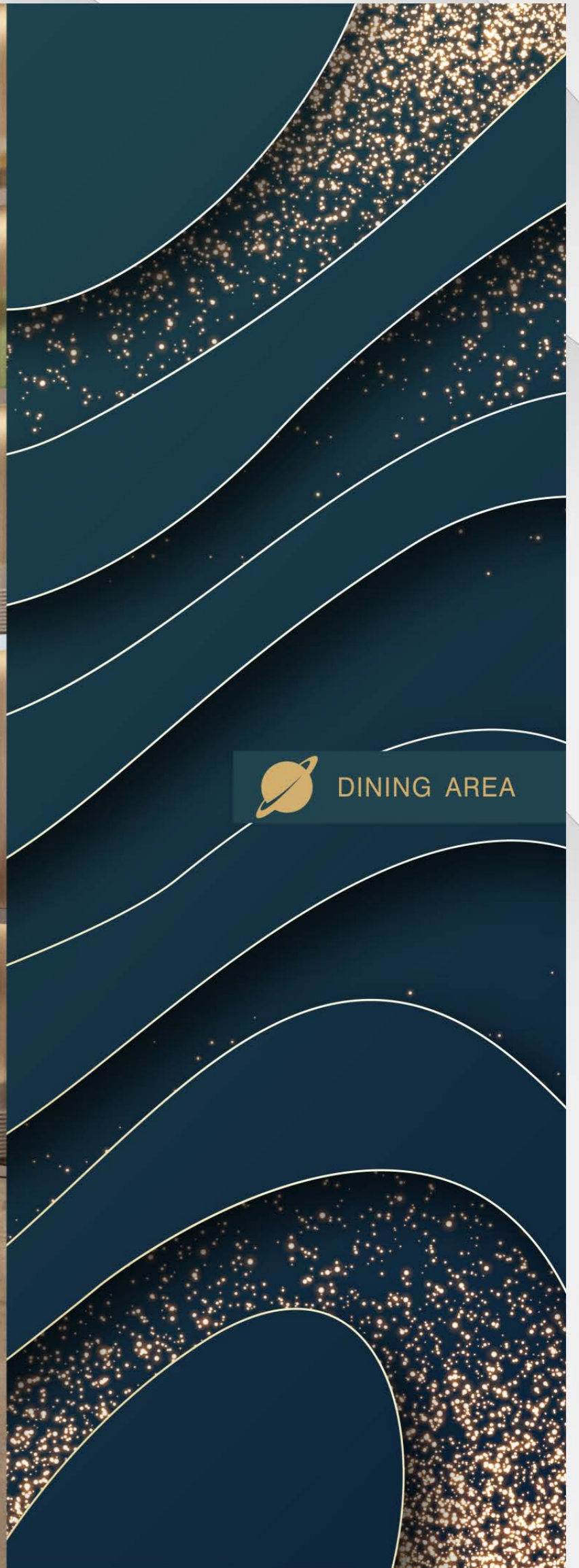
1	ENTRANCE FOYER	5'-6" X 7'-9"	10	STORE	5'-0" X 3'-3"
2	CHILDREN BEDROOM	9'-1½" X 9'-0"	11	FAMILY SITTING	12'-0" X 10'-6"
3	LIVING ROOM	15'-0" X 19'-9"	12	C. TOILET	5'-0" X 6'-1½"
4	ST. BALCONY	14'-9½" X 2'-0"	13	A. TOILET	5'-0" X 7'-6"
5	BEDROOM	12'-0" X 11'-0"	14	ST. BALCONY	7'-3" X 2'-0"
6	DINING	12'-4½" X 10'-6"	15	BEDROOM	11'-3" X 14'-0"
7	KITCHEN	12'-0" X 10'-9"	16	BEDROOM	14'-0" X 12'-0"
8	WASH	7'-10½" X 3'-10½"	17	ST. BALCONY	7'-3" X 2'-0"
9	A. TOILET	5'-0" X 7'-0"			



GRAND LIVING ROOM







DINING AREA



MASTER BEDROOM



4TH BEDROOM  
OPTION-1

GUEST ROOM/  
SENIOR CITIZEN  
ROOM



4TH BEDROOM  
OPTION-3

KIDS ROOM/  
CHILDREN PLAY AREA



4TH BEDROOM  
OPTION-2

STUDY ROOM/  
OFFICE/LIBRARY



4TH BEDROOM  
OPTION-4

POOJA ROOM /  
YOGA ROOM





# ALL LIFE ESSENTIALS

*Just few minutes away*



## LANDMARKS

- Airport - 10 minutes
- SGCCI Exhibition Ground - 11 minutes
- TGB - 6 minutes
- Marriott Hotel - 11 minutes
- Dumas Beach - 16 minutes



## SCHOOL & EDUCATION

- S D Jain School - 2 minutes
- J H Ambani School - 4 minutes
- VNSG University - 8 minutes
- G D Goenka School - 8 minutes
- Agarwal Vidya Vihar School - 8 minutes
- Bhagwan Mahavir College - 10 minutes



## SPIRITUAL

- Jain Upashray - 0 minute
- Shyambaba Temple - 6 minutes
- Ambika Niketan - 12 minutes



## HEALTH CARE

- Green Leaf Hospital - 5 minutes
- Florence Hospital - 5 minutes
- Sanjeevani Multi Speciality Hospital - 5 minutes
- Anand Children Hospital - 6 minutes
- Sunshine Global Hospital - 6 minutes
- Noble Hospital - 6 minutes
- C B Patel Health Club - 6 minutes
- Bankers Heart Institute & Hospital - 8 minutes



## SHOPPING

- VR Mall - 4 minutes
- Big Bazar - 5 minutes
- Central Mall - 5 minutes
- ISCON Mall - 6 minutes
- Rahul Raj Mall - 6 minutes
- Big Bazaar - 6 minutes
- Metro Wholesale - 8 minutes



## ENTERTAINMENT

- Game Zone - 3 minutes
- City Pulse Multiplex - 6 minutes



**DMD**  
DEVELOPERS  
Quest For Excellence

PROJECTS



**3 & 4 BHK Coming Soon**



LOCATION PLAN



PR/GJ/SURAT/SURAT CITY/SUDA/RAA07681/121120  
Website: gujrera.gujarat.gov.in

DISCLAIMER: (01) All rights are reserved by the developers. (02) Legal charges, stamp duties, registration charges, G.E.B., S.M.C., SUDA & gas connection charges etc. to be borne by the member. (03) Rights reserved by the developers to make any changes in plan, elevation and other details which will be binding to all the members. (04) Internal and external changes shall not be allowed. (05) Subject to Surat jurisdiction. (06) Any new taxes announced by the government / S.M.C. / Authority will be borne by the member / buyer during the project. (07) This information book is the property of developers. It cannot be used as a legal document or reproduce without their permission. (08) Changes in services of individual units will not be permissible. (09) Any external signages for offices shall not be permitted for all the time to come. (10) This brochure is only for private circulation for general information to the members and shall not form a part of any agreement. It can be changed without prior notice.

Project By



Corporate Office

**DMD Developers Pvt. Ltd.**  
A16-21 RRTM,  
Behind Bharat Cancer Hospital,  
Saroli, Surat, Gujarat

Site Address

**'DMD COSMOS'**  
Maharana Pratap Road,  
Nr. Jolly Party Plot,  
Vesu, Surat, Gujarat

Architect / Design Consultant



Adajan, Surat.