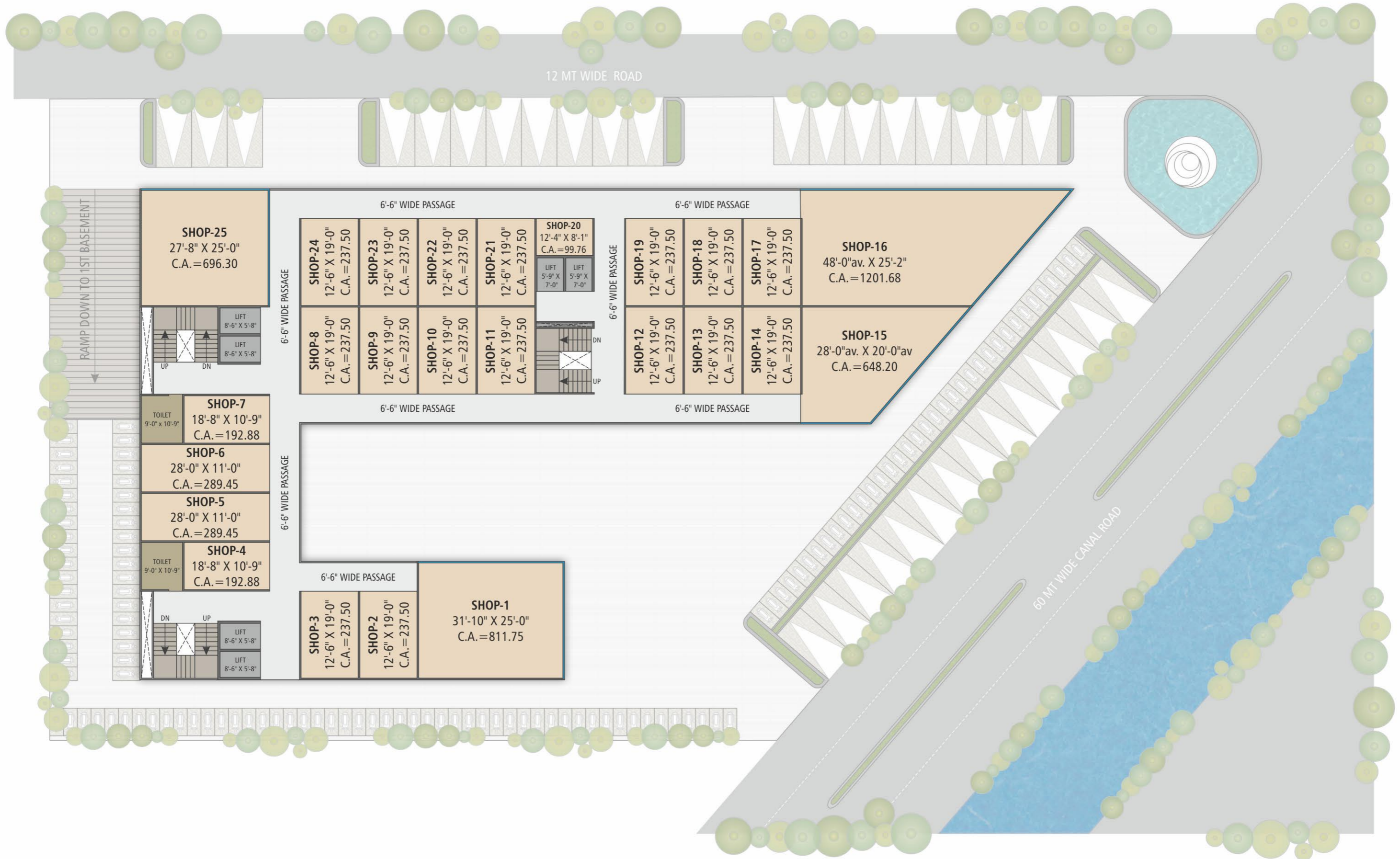


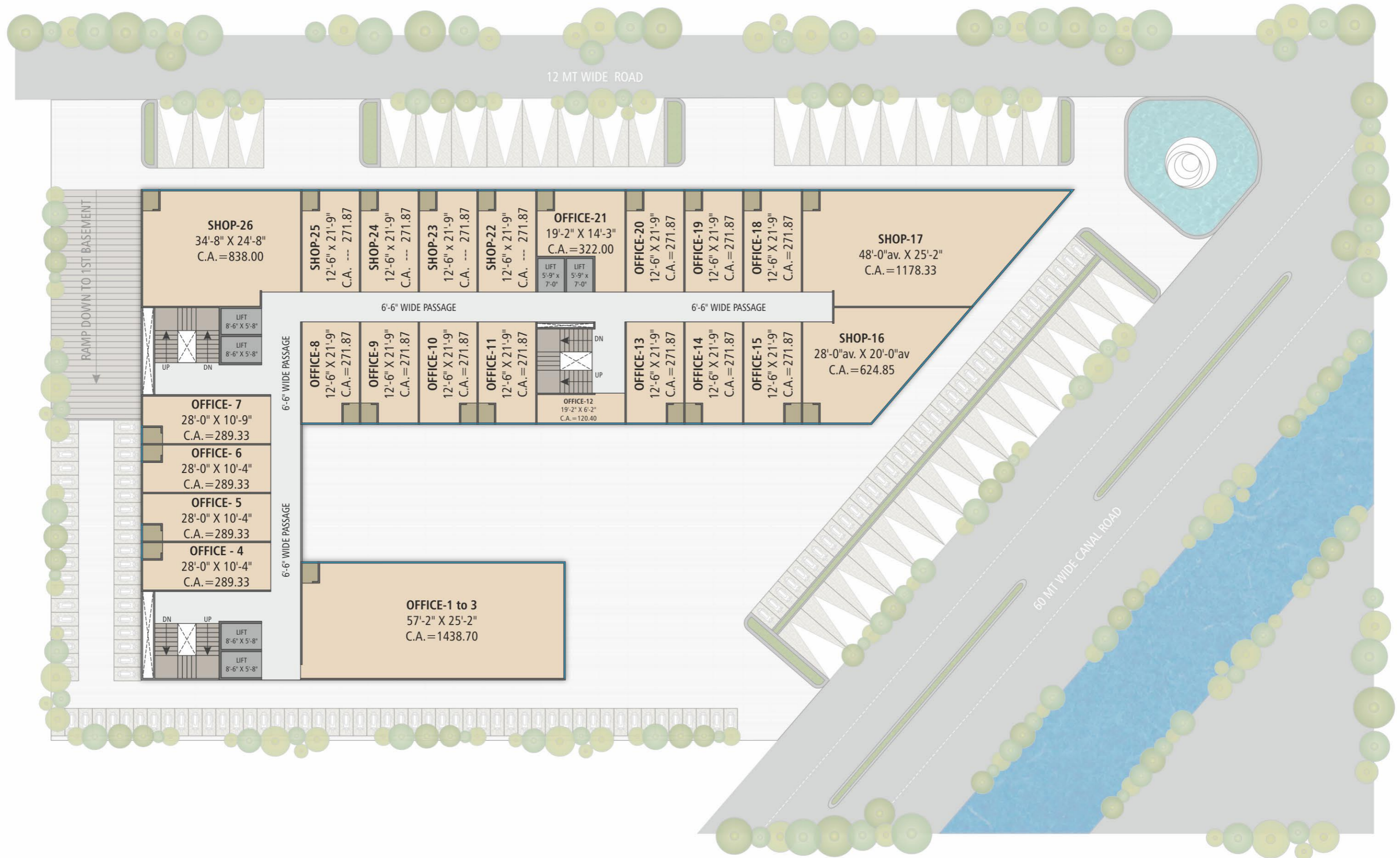
# GROUND FLOOR PLAN



# 1ST & 2ND FLOOR PLAN



# TYPICAL FLOOR PLAN (3RD TO 7TH)





## AMENITIES

### Parking

- 3 Level Parking .
- Ground Level: 2 Wheelers
- Basement 1 : Dedicated for 2 Wheelers
- Basement 2 : Dedicated for 4 Wheelers
- Basement 3 : Dedicated for 4 Wheelers

### Exclusive Amenities

- Modern Elevation
- Round the clock Security
- Intercom Systems
- Landscape and Fountain on ground
- Ample tree Plantation covering the Project
- CCTV Cameras on each floor as well as cover entire project
- Smoke Detectors on every floor

### Lift

- 6 high speed Elevators

### Ideal for

- Restaurants
- Cafeteria
- Banks
- Furnishing Showrooms
- Departmental Stores
- Retail Shops
- Gems
- Gift Shop
- Cake shop
- Corporate offices
- Financial institutions
- Optical Showrooms
- Dental Clinics
- Unisex salons
- Registered Spa's
- Boutiques
- Electronic Showrooms
- Furniture Showrooms
- Games zones for kids
- Mobiles shops
- Sweet shop
- Bakers
- Hardware Stores
- Stationary Store
- Grocery Stores
- Chemist
- Ice cream shops
- Safety Vaults
- Musical instrument store
- Toy shops
- Yoga and Zumba class

### Not permissible in this complex

- Banquet Hall
- Gym
- Hospitals
- Car Accessories
- Pan shops
- Tuition classes
- Unregistered spa



coming soon

**ECO**  
**COMMERZ**  
DESIGNER WORK SPACES  
LOCATION MAP

**CONNECTIVITY**

Railway Station	:	12	km
Airport	:	9	km
Surat Diamond bourse	:	4	km
VIP Road	:	500	mtr
Shyam Mandir	:	500	mtr
Bhagwan Mahavir College	:	1	km
DRB College	:	1.5	km
L.P. Savani Shool	:	2	km
Anuvrat Dwar	:	2.5	km

**notes**

- All rights fro Alternation / Modification and Development in Design or Specification by Architects and / or Developer shall be binding to all the members.
- B.U.C. ( Building Use Certificate ) As per SMC Rules, Clear Titles for Loan Purpose
- This Brochure is for Private Circulation only, By no means, it will form part of any legal contract.

**we request**

- Purchaser shall bear all charges of Stamp Duty. Registration charges and Advocate fees of Legal document, Service Tax, Local authority taxes and Connection charges for Electricity, Water supply and Drainage.
- Any Additional Charges or Duties by the government / Local authorities during or after the completion of the scheme like SMC tax be borne by the Purchaser.
- In the interest of continual Developments in design & Quality of Construction, the developer reserves all rights to make any changes in the scheme including technical specifications, designs, planning, layout & all purchasers shall abide by such changes.
- Changes / Alteration of any nature including elevation, exterior color scheme, balcony grill or any other changes affecting the overall design concept & outlook of the scheme are Strictly NOT PERMITTED During or After the Completion of the Scheme.
- Any RCC member ( Beam, Column & Slab ) must not be damaged your interior work.
- All External Laying And Drawing of Law-voltage Cables such as Telephone, TV and Internet Cables Shall be Strictly laid as per Consultant's service Drawings With Prior Conset of Developer / Builder Office. No Wire / Cables / Conduits Shall be Laid or Installed Such That They From Hanging Formation On The Building Exterior Faces.
- This Brochure is intended only for easy display & information of the scheme and does not form of the legal documents.
- This Pamphlet is for survey purpose only. Not intent for marketing.

