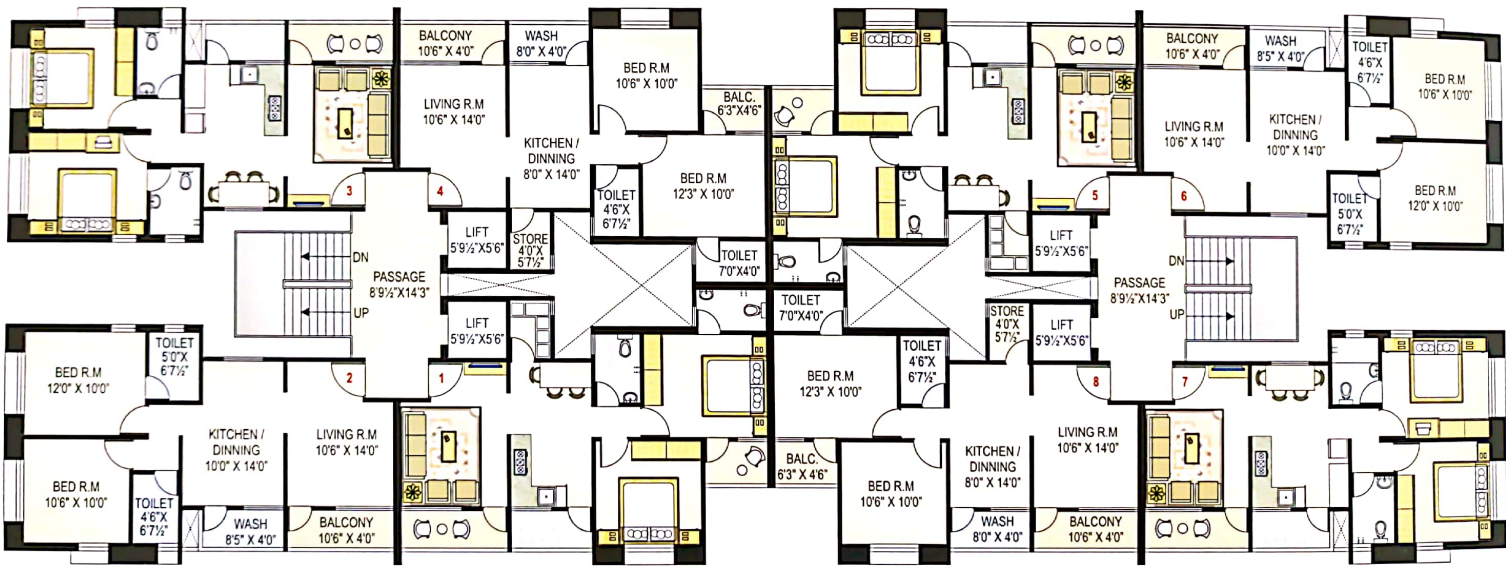




2 BHK (G+13)(TYPICAL FLOOR PLAN) SUNFLOWER 1,2

SAMPLE FLAT READY



3 BHK (G+5) (TYPICAL FLOOR PLAN) JASMINE 1,2,3,4

SAMPLE FLAT READY



MARIGOLD (TYPICAL FLOOR PLAN) 2 BHK (G+13)

SAMPLE FLAT READY



3 BHK (G+11) (TYPICAL FLOOR PLAN) ROSE 1,2,3

SAMPLE FLAT READY





LILY-2.3 TYPICAL FLOOR PLAN (1st TO 5th)

SAMPLE FLAT READY





Amenities

- Club house with Yoga space
- Swimming Pool
- Gymnasium
- Steam Room
- Indoor Games
- Children Play Area
- Garden
- Party Lawn
- Generator Backup in common areas and specific points in flats.
- 24 X 7 Security
- Intercom Service
- R/O Plant in all flats
- Automatic Lifts

Visualization of future....

Flourish Heights

Specifications

- Earthquake resistant structural design.
- Vitrified flooring in all rooms.
- Black granite kitchen platform with good quality kitchen sink and tiles up to lintel level.
- Kota stone racks.
- Salwood frames flush door with attractive hardware and locks.
- Powder coated aluminum windows with granite sill.
- Attractive grill on all windows.
- All toilets with designer glazed tiles up to lintel level.
- Concealed wiring with superior quality accessories.
- Good quality C. P. fittings and sanitary wave.
- All walls with white putty finish.
- Ample car parking.



Visualization of future....

Aagam Heights

Aagam Group

Pooja Abhishek Complex, Athwalines, Surat
Ph: (0261)2226007.



PR/GJ/SURAT/SURAT CITY/SUDA/RAA01666/170218

<p>Developers</p> <p>Aagam Infrastructure</p> <p>Akshar Corporation</p> <p>Surat</p>	<p>Civil Project Consultant (Architect)</p> <p>B. M. Patel</p> <p>Surat.</p>	<p>Project By</p> 
----------------------------------------------------------------------------------------------------	-----------------------------------------------------------------------------------------	------------------------------------------------------------------------------------------------------

PR/GJ/SURAT/SURAT CITY/SUDA/RAA01667/170218

Note

- All rights reserved by organiser to make any changes in specification, plan, elevation and other details therein, which shall be binding to all the members.
- Legal charges, stamp duties, registration charges G.S.T, G.E.B., S.M.C., SUDA charges et born by the members.
- Maintenance deposit shall be taken in advance.
- Gas connection charges and generator charges shall be taken in advance.
- Changes in external elevation shall not be allowed.
- Furniture and fixtures shown are only for indication of arrangement and not to be provided.

