



**RAJHANS™**  
DESAI-JAIN GROUP  
WINGS OF HAPPINESS

IVRS No. : +91 93745 33440 or Email: [realty@rajhans.co.in](mailto:realty@rajhans.co.in)  
Website: [www.rajhansrealty.co.in](http://www.rajhansrealty.co.in)

Corporate Office Address:  
Rajhans House, 3rd Floor, Opp. Gitanjali Petrol Pump, Near Station, Surat-395006, Gujarat, India.  
Phone: 0261 2551129, 255 3307

Mumbai Office Address:  
A-204, Everest Grande, Mahakali Caves Road, Andheri - East, Mumbai-400093  
Phone: 022 32259605 / 6

Principal Architect  
Architect Rushikesh H. (Andheri (E), Mumbai)

Architect  
Aayojan (Hareshbhai Mahadevwala)

Structural Designer  
Er. Jalil Shaikh

Landscape Architect  
Nirav Shah (Surat)

Vastu Consultant  
Dinanath Sharma, (Greater Kailash - New Delhi)

Legal Consultant  
Manish Gandhi



**RAJHANS™**  
**COSMIC**







H O M E F O R

T H E S T A R S .





DAY VIEW



NIGHT VIEW





ome  
for the stars.

If there's one thing that sets apart distinguished individuals like you, it's the way you live and love life. You don't live by the clock. The world waits for you as you set the deadlines and timelines. What you set for yourself is an exclusive lifestyle that simply celebrates life. A round of golf, a lap in the swimming pool, a 5D movie experience, all these without ever stepping out of your home. For stars like you, who have risen above the ordinary, here's an exclusive 5-star home with an aura to match. Introducing Cosmic.







DOUBLE HEIGHT LOBBY VIEW



ARTISTIC VIEW





menities

- Yoga and Meditation Area
- World Class Gym with Spa
- 5D Home Theatre with 20 Recliner Seat
- Best Security System will be Provided
- Smoke Detectors and Fire System
- Granite Staircase Steps
- Terrace Garden with Gazebo for Common Use
- IP Video Door Phone
- CCTV Camera in Building and Common Amenities
- Children's Pick-up Point
- Fully Furnished Business Center like Five Star Conference Room
- Fully Furnished Guest Room in Common Area
- Well Decorated Party Hall with Proper Kitchen and Washroom Facility.
- Common Laundry Facility
- Cafeteria
- Kids Play Area
- Indoor Game Zone
- Outdoor Game
- Squash Court
- 5 Star Standard Aesthetic Entrance Foyer with Double Height
- Well Developed Landscape Garden with Fountain and Sculpture
- Floor Height - Slab to Slab 11 Feet
- Two Level Basement Parking
- Residential Unit will Start from 2nd Floor Level
- Five Cars Parking Allotted, including One Cover Parking
- Separate Servant cum Goods Lift / Stretcher Lift
- Internal Lift for Personal Use
- Indoor Double Height Swimming Pool & Kids Pool with Jacuzzi





## Internal Features

- Italian Flooring in Hall, Dining, Kitchen and all Bed Room
- Main Door with Teak Wood Frame, Internal Door with Composite Marble Sill and Laminated / Veneer Finish
- Home Automation in Hall
- Italian Modular Kitchen Platform
- Finger Touch Lock
- VRV Type HVAC
- Gas Connection
- Central Gas Geyser for Individual Unit
- Anodized Coated French Window with Composite Marble Sill with Reflective Glass
- SS Glass Railing in Balcony
- Toilet with Italian Marble and Designer Tiles as per Architectural Concept
- German Brand Sanitary Wares and C.P. Fittings
- Standard Quality Wiring and Electrical Switches
- IP Video Door Phone



## Tower Features

- Earthquake Resistant RCC Frame Structure
- Fully Power Back-Up Facility
- Ultra-Modern State-of-the-art Building with International Appeal
- Pressurized Water Supply
- External Texture Finish
- Design according to Latest International Codes
- Anti-Termite Treatment
- Fire Safety Features in Every Tower





GATE ENTRY VIEW



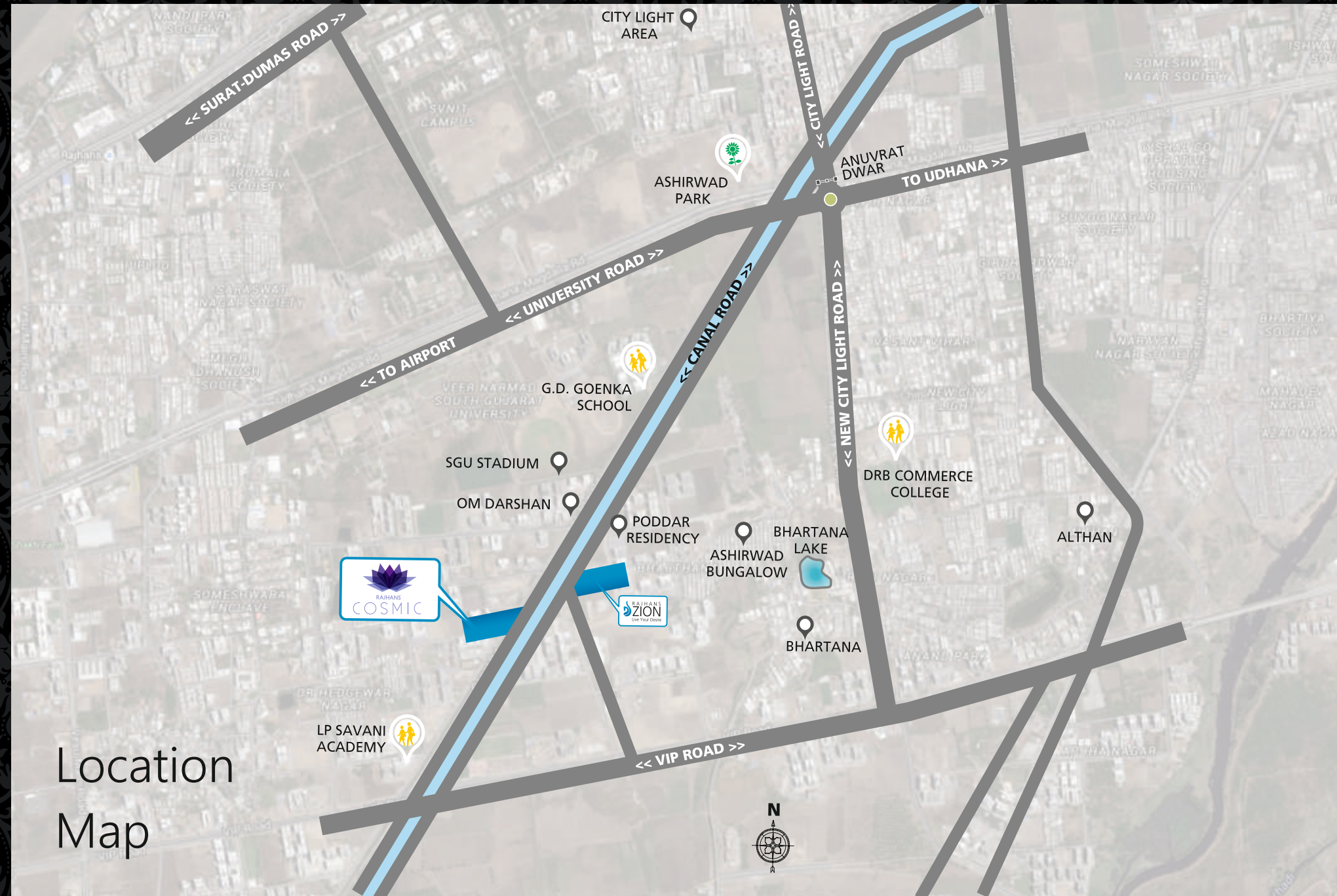


# Legend

1. Circular Entry Feature
2. Feature Wall at Entrance
3. Temple
4. Bamboo Tree Garden
5. Drop Off Point
6. Tree Seating Features around Peripheries
7. Water Feature in Front of Children Play Area
8. Children Play Area
9. Joggers Track
10. Landscape Feature
11. Outdoor Seating Area
12. Gazebo
13. Basketball Court
14. Featuristic Wall with Seating
15. Skating Area
16. Party Hall
17. Security Cabin
18. Sandpit
19. Water Body







**RAJHANS™**  
**COSMIC**



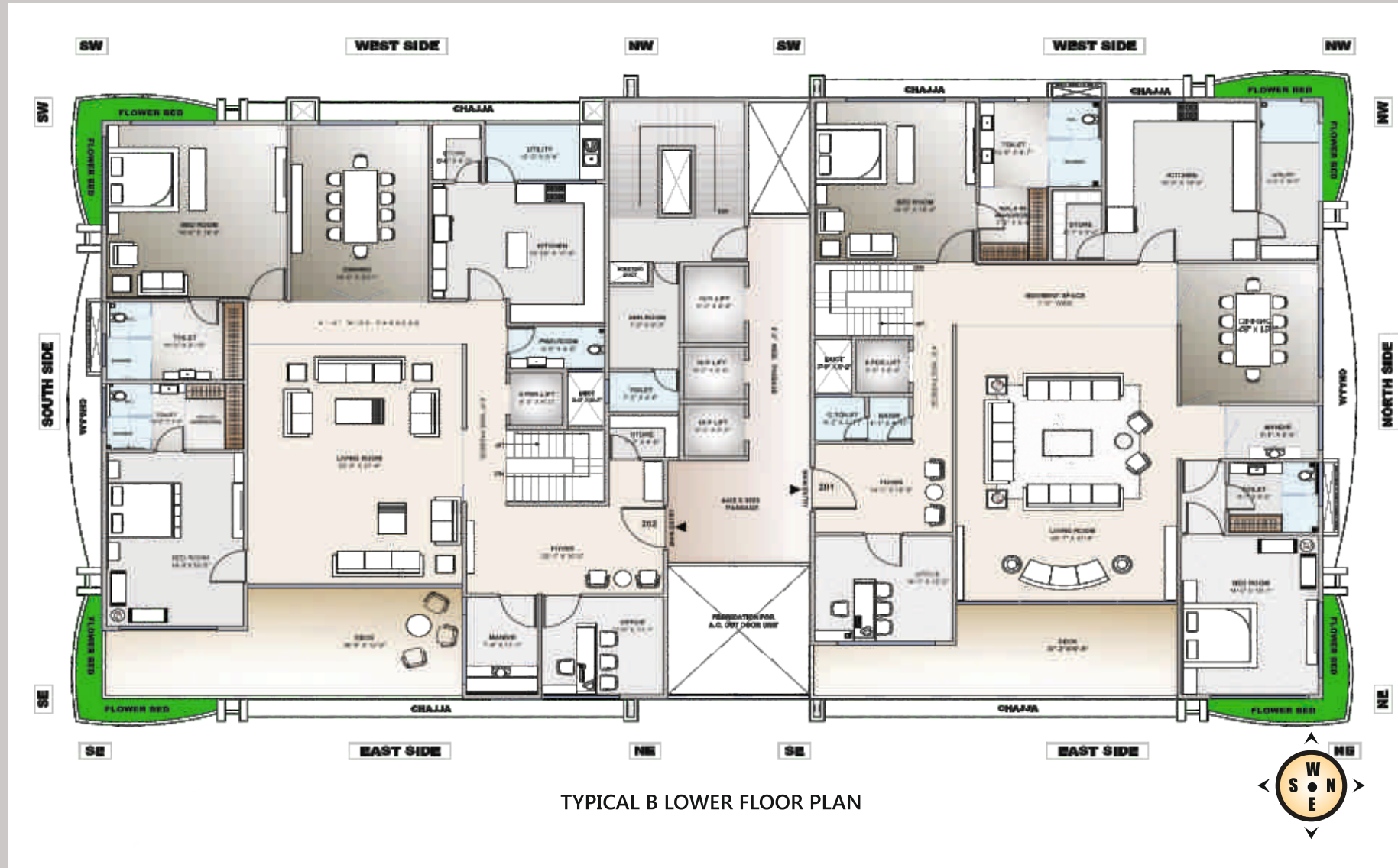
# Floor Plans

flap





flap





flap

