



*Live the Green Life!*

**RAMESHWARAM**  
*Greens*





*Presenting the sheer delight of nature...*



RAMESHWARAM  
*Greens*







*The gateway to heaven is carved with innocence and bliss!*







RAMESHWARAM  
*Greens*

*High-rises never forget where they are rooted in;  
their strength of character!*





RAMESHWARAM  
*Greens*

*Go green to maintain nature's sheen and shine*













RAMESHWARAM  
*Greens*



- 🌟 *Gazebo*
- 🌟 *Water Bodies*
- 🌟 *Garden*
- 🌟 *Skating Rink*
- 🌟 *Drop Off Plaza*
- 🌟 *Children Play Area*
- 🌟 *Ample Car Parking*
- 🌟 *Security*



LEGEND

- A COMMON PLOT - 1
- B COMMON PLOT - 2
- C COMMON PLOT - 3
- D COMMON PLOT - 4
- 01 ENTRANCE
- 02 PAVING
- 03 SEATING
- 04 LAWN
- 05 PLANTER
- 06 WATER FALL
- 07 SEATING AREA
- 08 PATHWAY
- 09 SKATING RINK
- 10 CHILDREN PLAY AREA
- 11 JOGGING PATH
- 12 POT FOUNTAIN
- 13 FOUNTAIN
- 14 CAR PARKING



80' WIDE ROAD

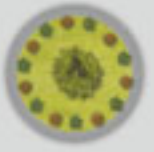
100' WIDE ROAD

25' WIDE APPROACH

25' WIDE APPROACH

Exit  
Entry

Exit  
Entry





RAMESHWARAM  
*Greens*

Ground Floor Plan



25' WIDE APPROACH

25' WIDE APPROACH

CAR PARKING

100' WIDE ROAD

80' WIDE ROAD



Entry Exit

Exit Entry

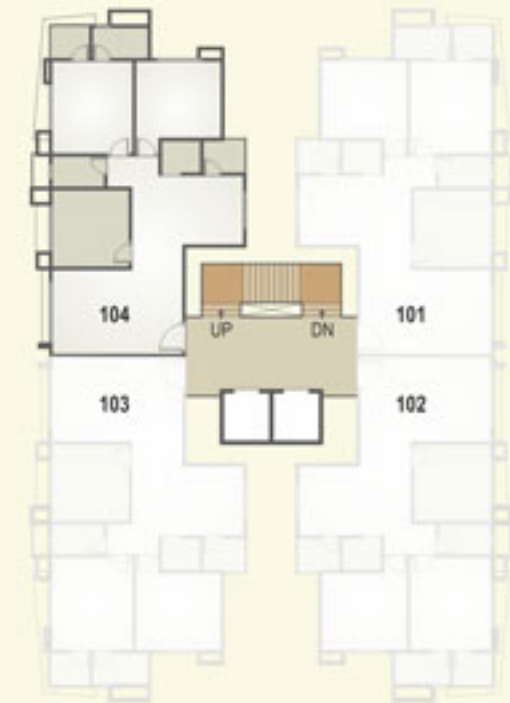




*Enjoy your leisure time because life is cherished in our idle moments*



RAMESHWARAM  
*Greens*



**3 BHK Unit Plan**

Block - A To E



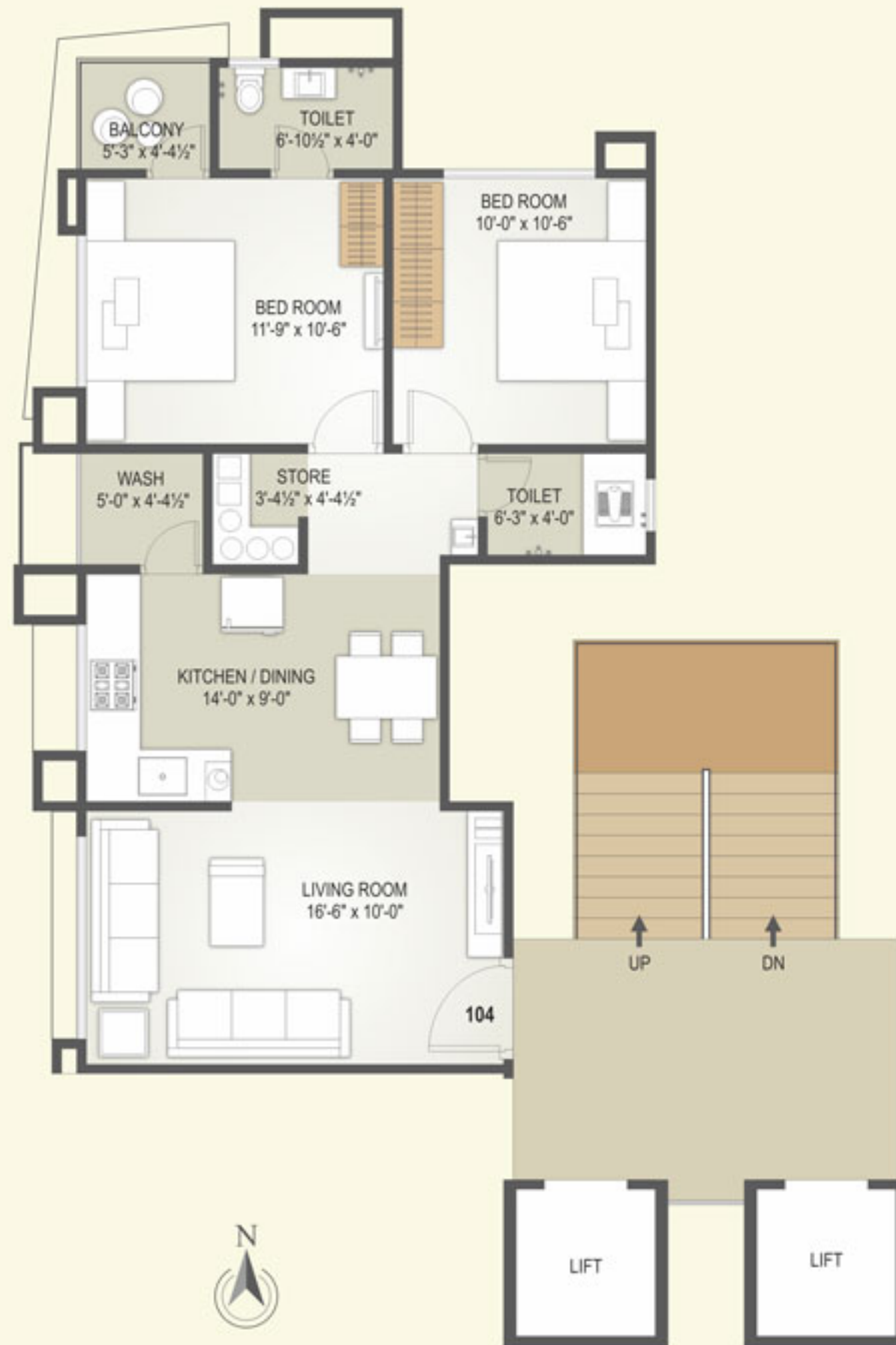


*It is grand enough to be surrounded by  
luxury in the midst of nature*





RAMESHWARAM  
*Greens*



**2 BHK Unit Plan**

Block - F To J & M







*Shady palms and a calm mind make life better*



RAMESHWARAM  
*Greens*



**2 BHK Unit Plan**  
Block - K & L









## Specifications

### Flooring

Premium quality 2'x2' Granamite Tiles flooring in Living, Dining, Kitchen and all Bed Rooms

### Kitchen

Polished Granite Kitchen Platform. Good quality Dado Tiles up-to lintel level

### Toilet & Plumbing

Designer Tiles for flooring and Dado Tiles up-to lintel level

One Orissa Pan in common Toilet. European type W. C. in all attached Toilets

C. P. Fittings of Standard Company in all Bathrooms and Toilets

### Door

Decorative Main Door with Internal Wooden frame and Marble Frame in bath and wash area with all C. P. fitting

### Window

Powder Coated Aluminum Section Windows

### Electrification

Concealed Conduits with Copper wire. Suitable Points & Standard Switches

### Wall Finish

**Internal Walls** - Lapi finish in all plastered Walls and Ceiling

**External Walls** - Weather shield Colour of Standard Company and Paint in Common area. Decorative finish to be given to the Entrance, Foyer and Lobby area

### Salient Feature

Vital Location: 2 Km from Prime area of VESU and Bhimrad, close to VIP Road

Sophisticated & Contemporary designing visible from all locations.

Extensively landscaped gardens

Ample Parking

Generator will be provided for all common services

### Campus Development

All Roads of R. C. C. and Checkered Tiles in Parking

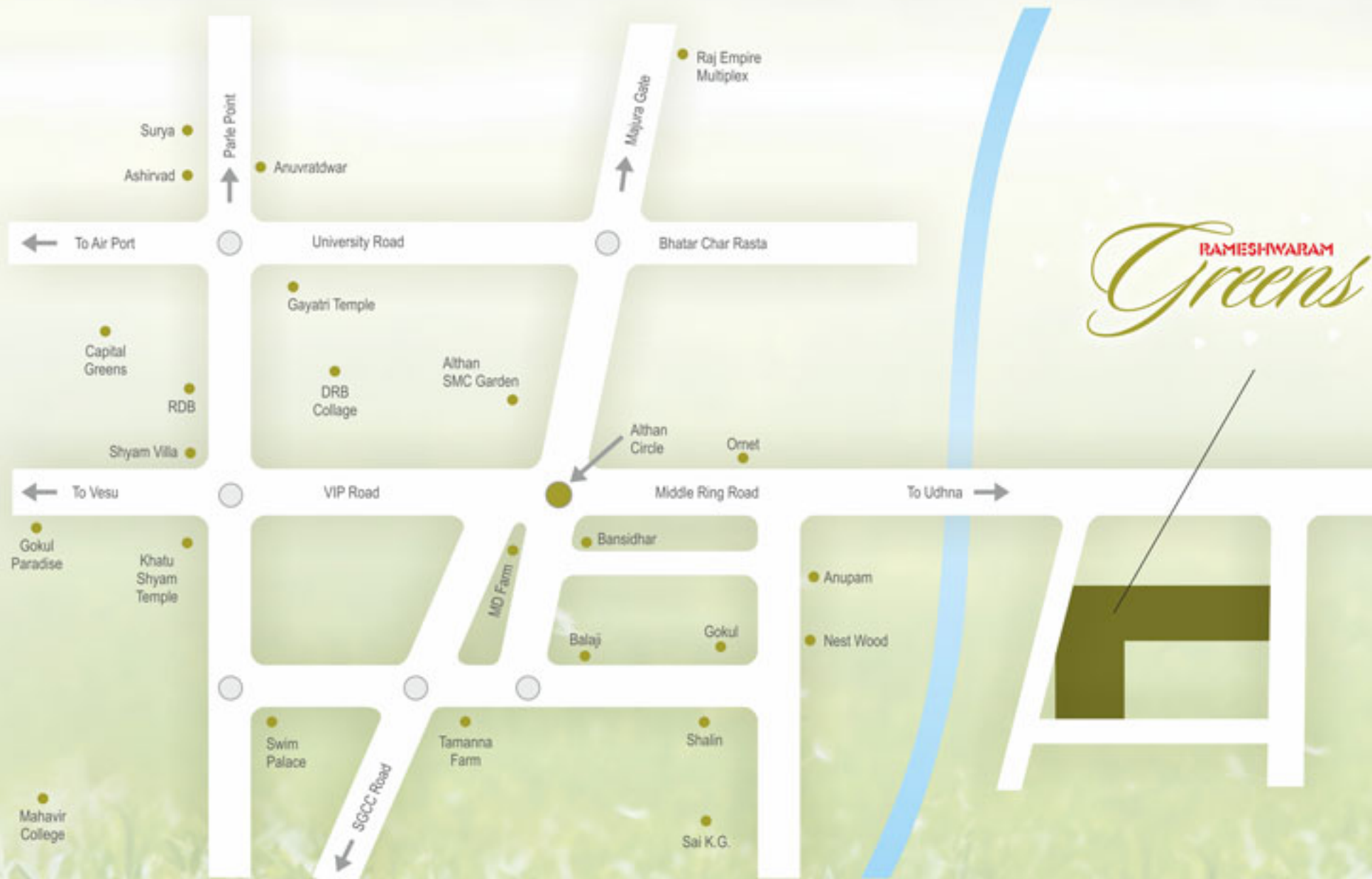
Main Entrance Gate with Security Cabin and Street Lights

### Extra Charges

Legal documents, Service Tax, VAT, Society maintenance, SMC tax and others as applicable will be borne by the member along with Gas Connection, Safety Grill, Electric Connection, Drainage, Water Supply, Sale Deed and File (etc.) charges



## Key Plan (Not to Scale)



**RAMESHWARAM**  
*Greens*

Site:  
**Rameshwaram Greens**  
Nr. Althan Bamroli Bridge, Bamroli, Surat.



Project Planner

**Rajmandir Consulting Engineers**



Email: [rajmandir.nj@gmail.com](mailto:rajmandir.nj@gmail.com)

Structural Designer



**Hemant Shukla**

Developer



Email: [rameshwaramgroup@gmail.com](mailto:rameshwaramgroup@gmail.com)  
[www.rameshwaramgroup.com](http://www.rameshwaramgroup.com)