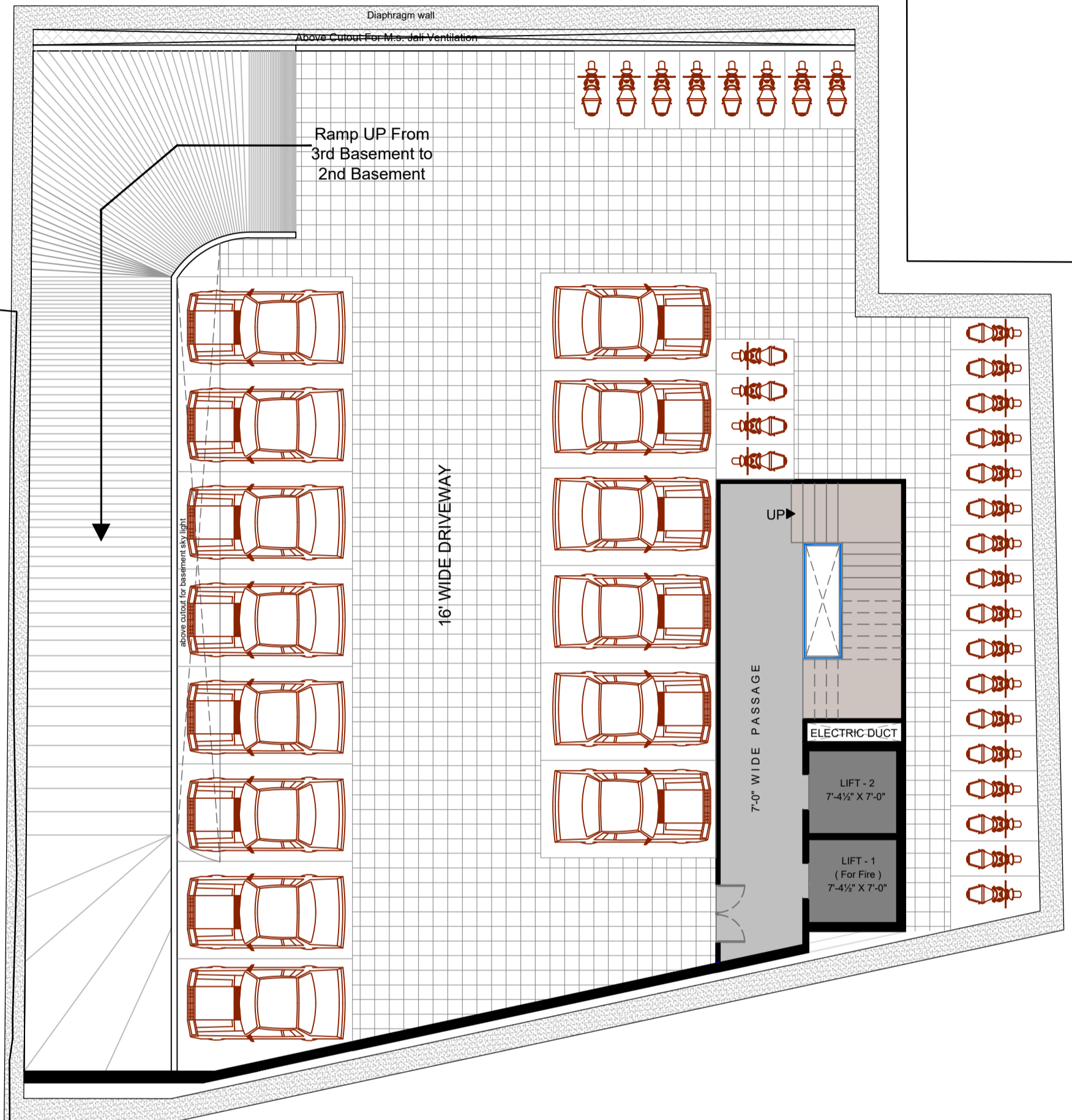


25' WIDE MAIN ROAD



←-----TO ATHWA

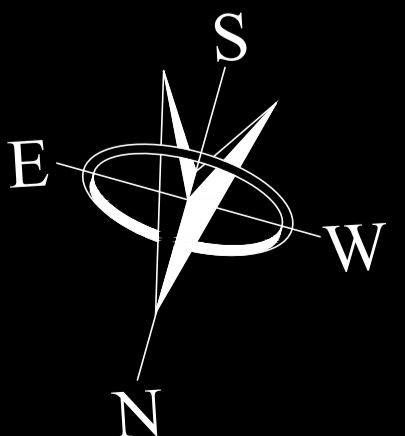
120' WIDE MAIN ROAD

TO DUMAS ----->

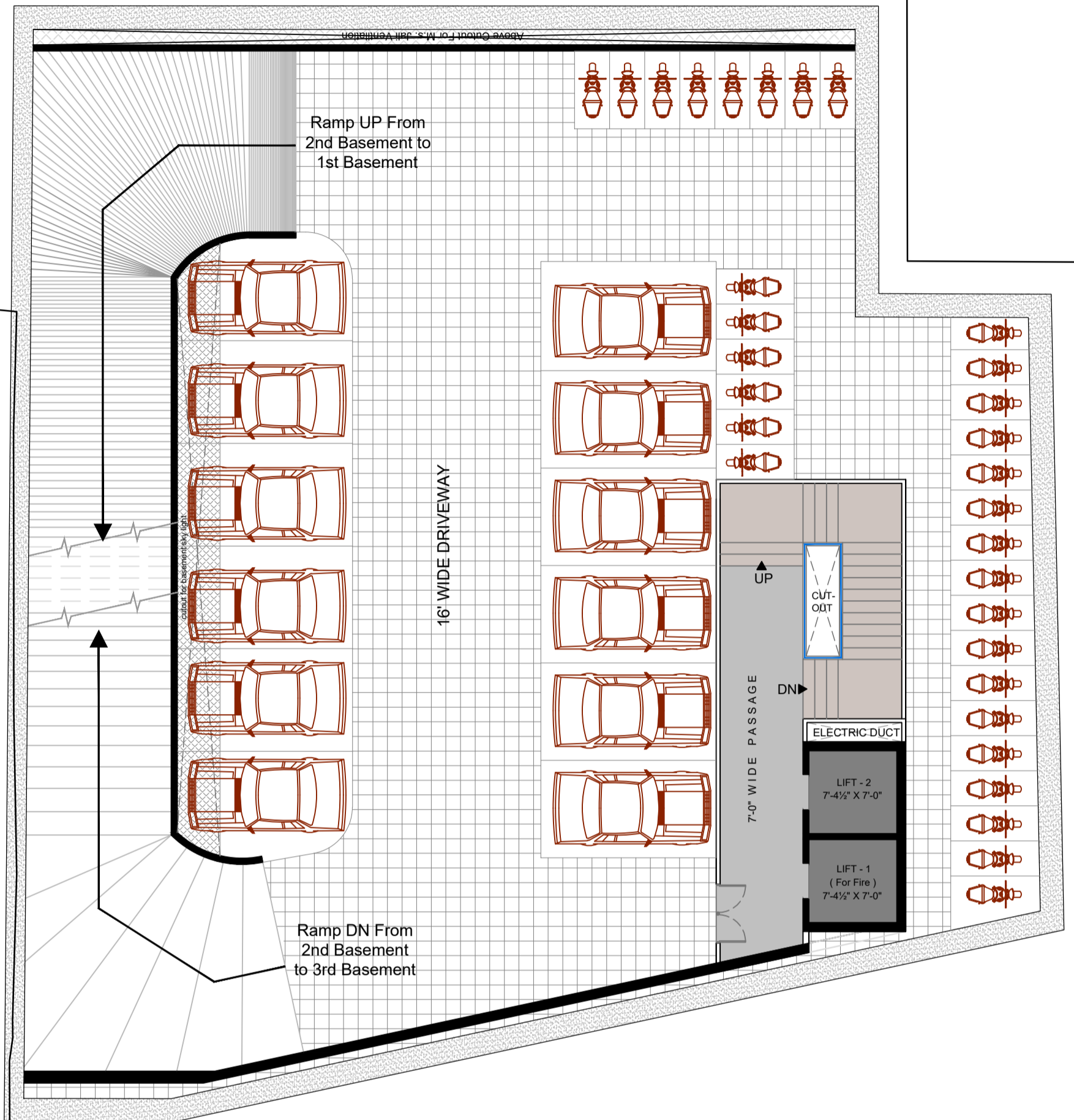
3RD BASEMENT FLOOR PLAN

FLOOR HEIGHT = 10'-6"

**RAJHANS ARON**  
(ATHWA-UMRA, SURAT.)



25' WIDE MAIN ROAD



←-----TO ATHWA

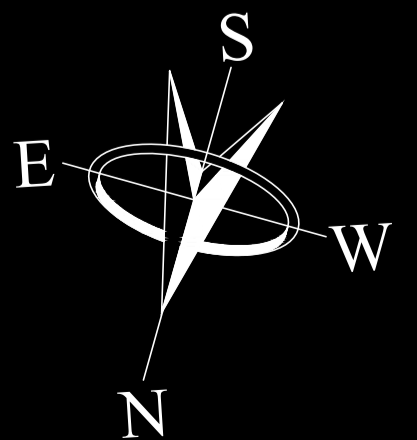
120' WIDE MAIN ROAD

TO DUMAS ----->

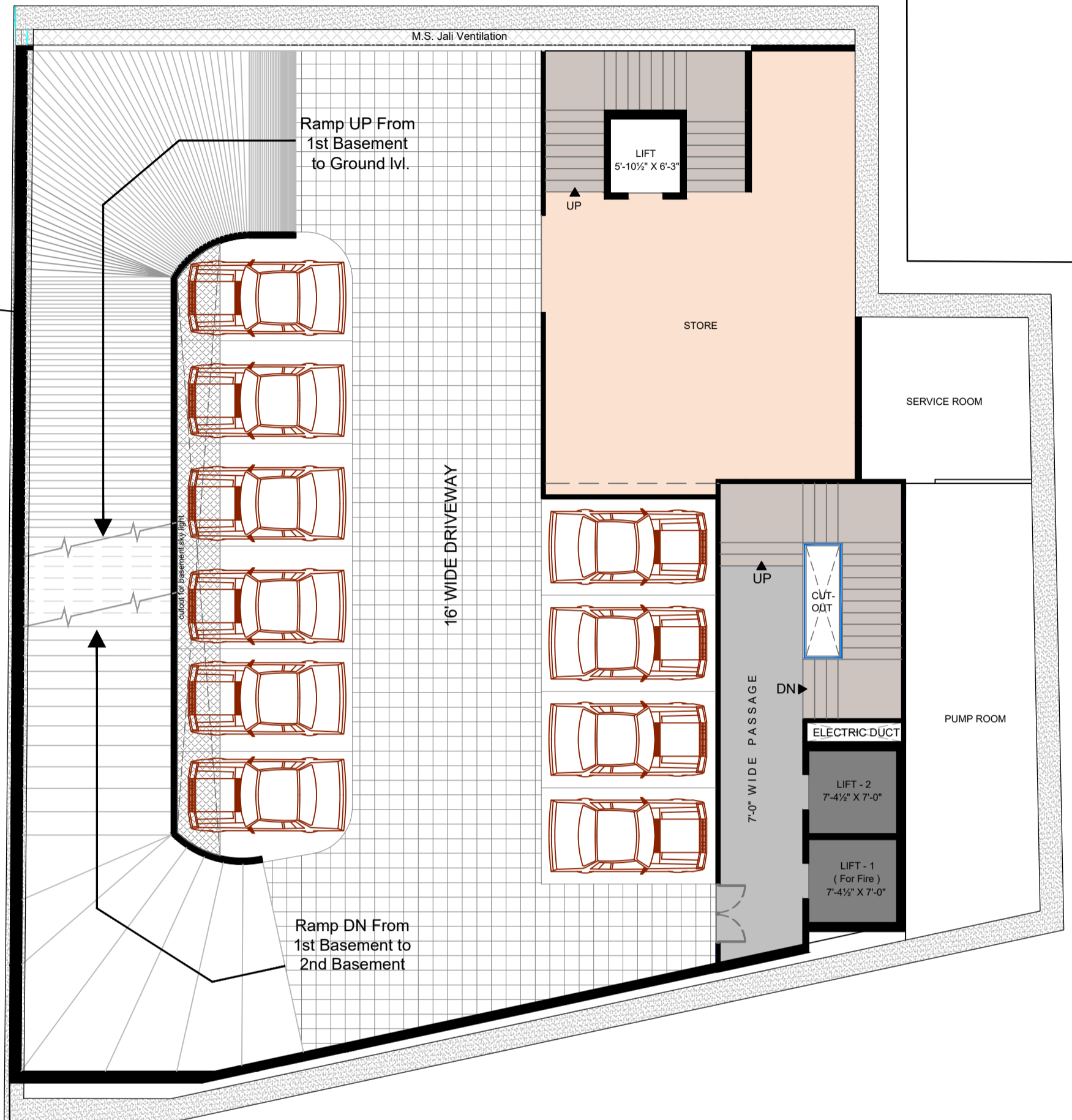
2ND BASEMENT FLOOR PLAN

FLOOR HEIGHT = 10'-6"

**RAJHANS ARON**  
(ATHWA-UMRA, SURAT.)



25' WIDE MAIN ROAD



←-----TO ATHWA

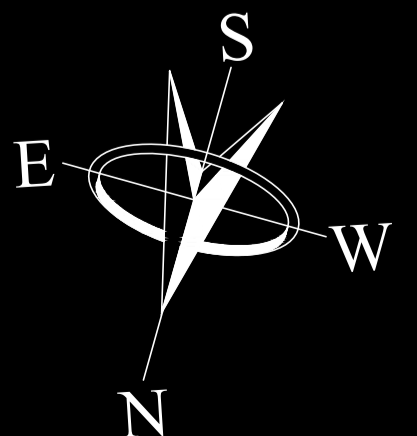
TO DUMAS ----->

120' WIDE MAIN ROAD

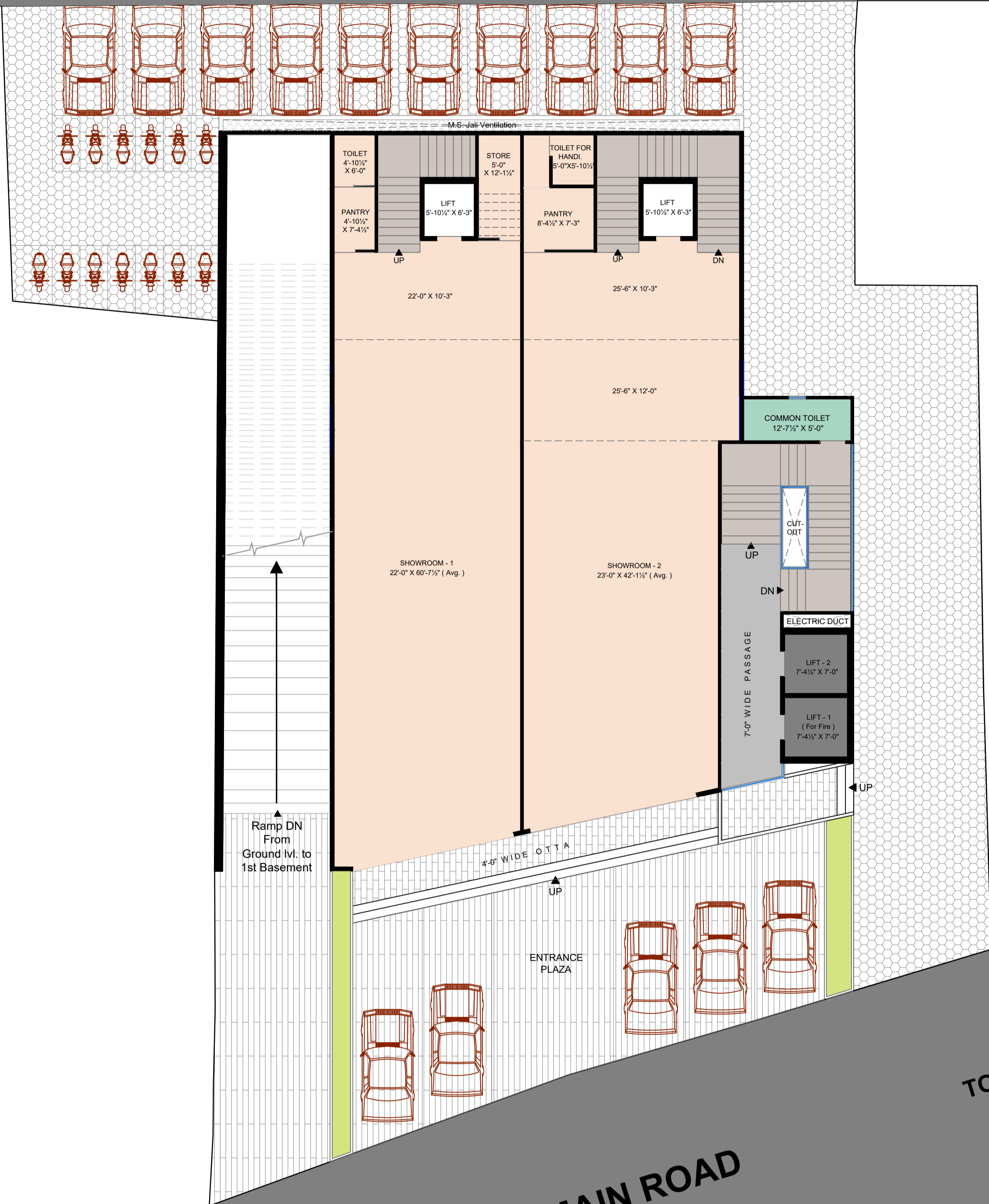
**1ST BASEMENT FLOOR PLAN**

FLOOR HEIGHT = 9'-10 1/2"

**RAJHANS ARON**  
(ATHWA-UMRA, SURAT.)



25' WIDE MAIN ROAD



←---TO ATHWA

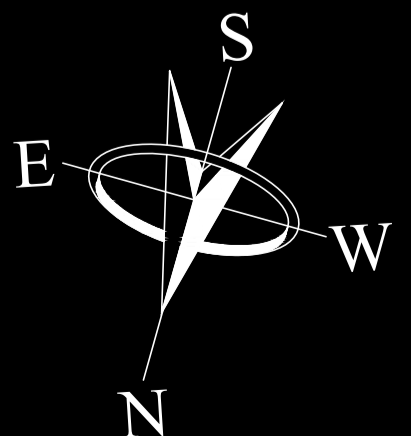
120' WIDE MAIN ROAD

TO DUMAS →

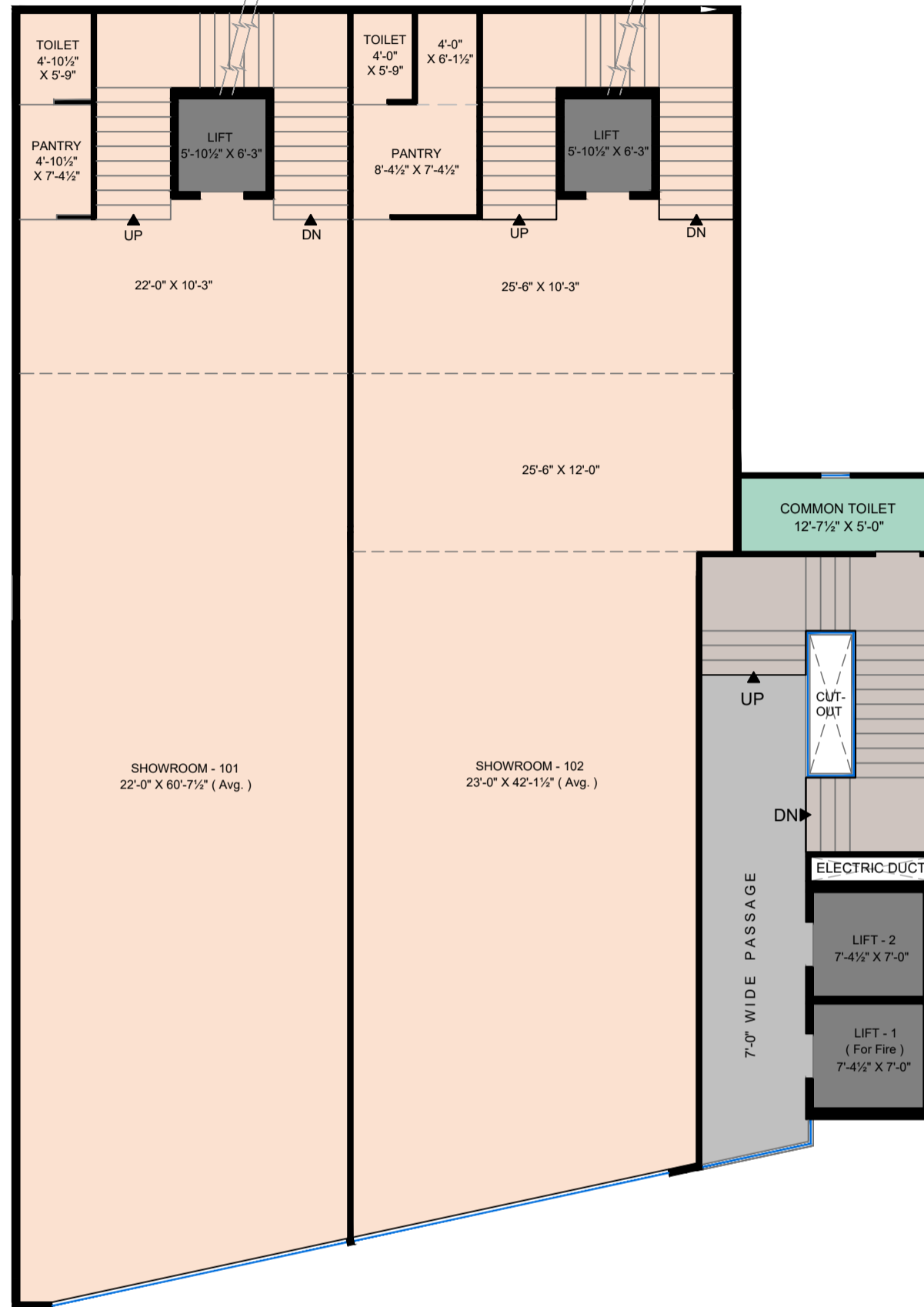
GROUND FLOOR PLAN

FLOOR HEIGHT = 14'-0"

**RAJHANS ARON**  
(ATHWA-UMRA, SURAT.)



25' WIDE MAIN ROAD



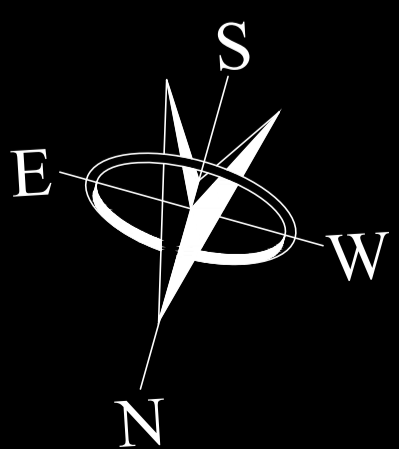
TO DUMAS →

120' WIDE MAIN ROAD

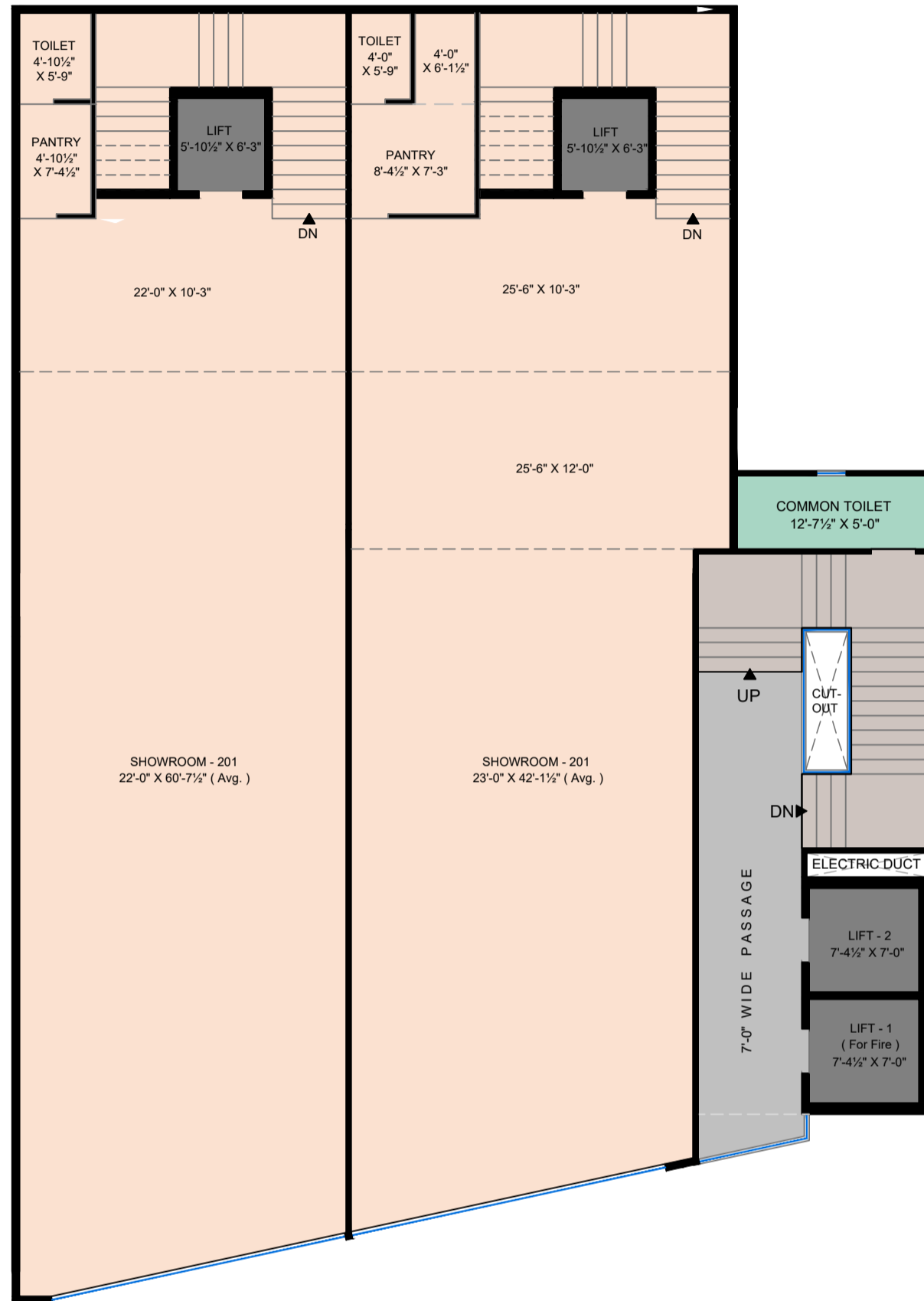
← TO ATHWA

1ST FLOOR PLAN  
FLOOR HEIGHT = 12'-0"

**RAJHANS ARON**  
(ATHWA-UMRA, SURAT.)



25' WIDE MAIN ROAD



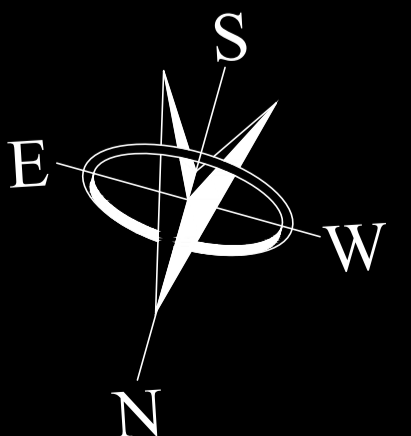
←-----TO ATHWA

TO DUMAS ----->

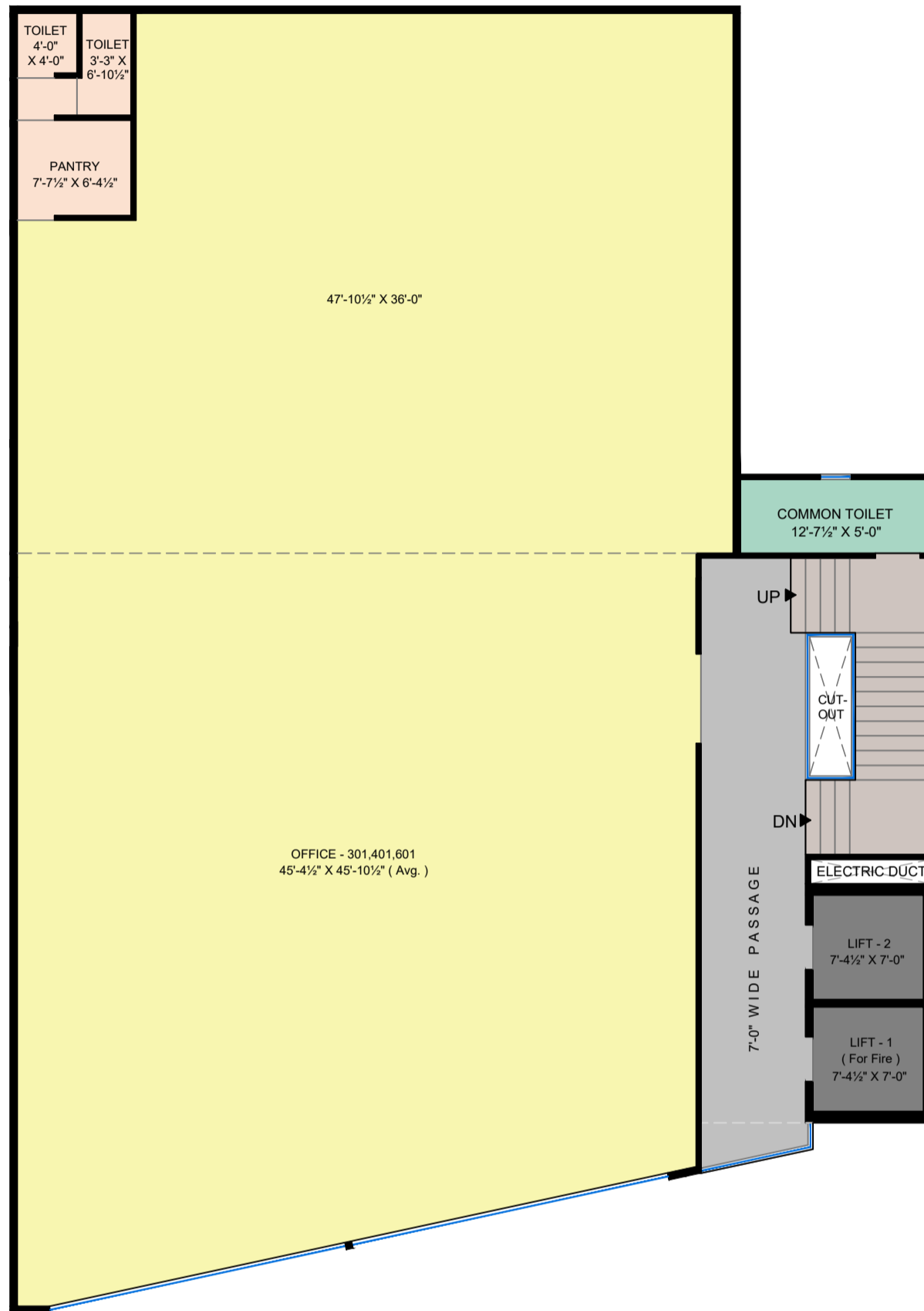
120' WIDE MAIN ROAD

2ND FLOOR PLAN  
FLOOR HEIGHT = 12'-0"

**RAJHANS ARON**  
(ATHWA-UMRA, SURAT.)



25' WIDE MAIN ROAD



TO DUMAS ----->

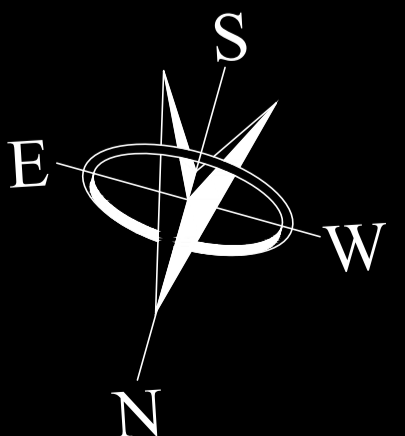
120' WIDE MAIN ROAD

<-----TO ATHWA

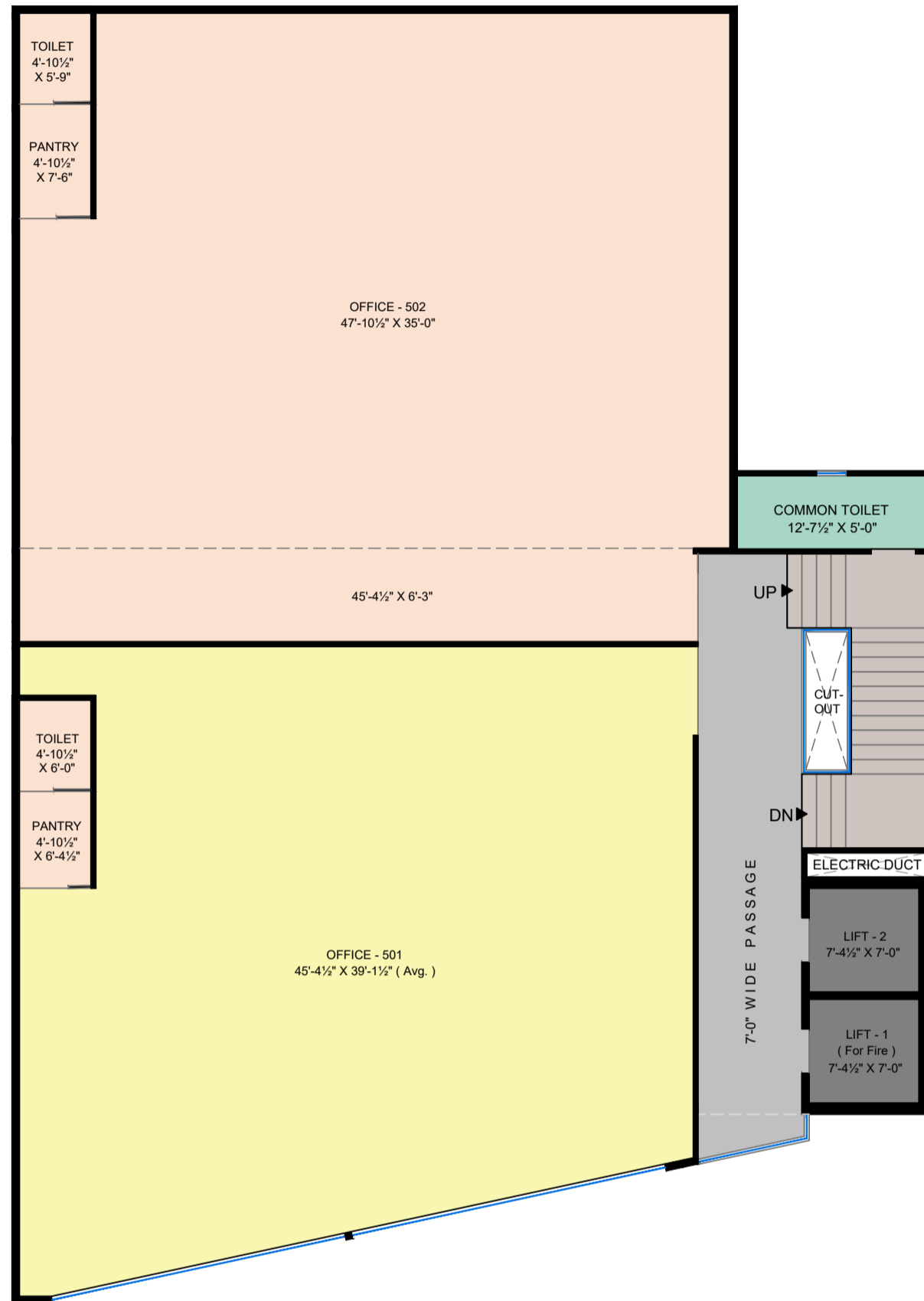
3RD,4TH & 6TH FLOOR PLAN

FLOOR HEIGHT = 10'-6"

**RAJHANS ARON**  
(ATHWA-UMRA, SURAT.)



25' WIDE MAIN ROAD



TO DUMAS →

← TO ATHWA

120' WIDE MAIN ROAD

5TH FLOOR PLAN  
FLOOR HEIGHT = 10'-6"

**RAJHANS ARON**  
(ATHWA-UMRA, SURAT.)

