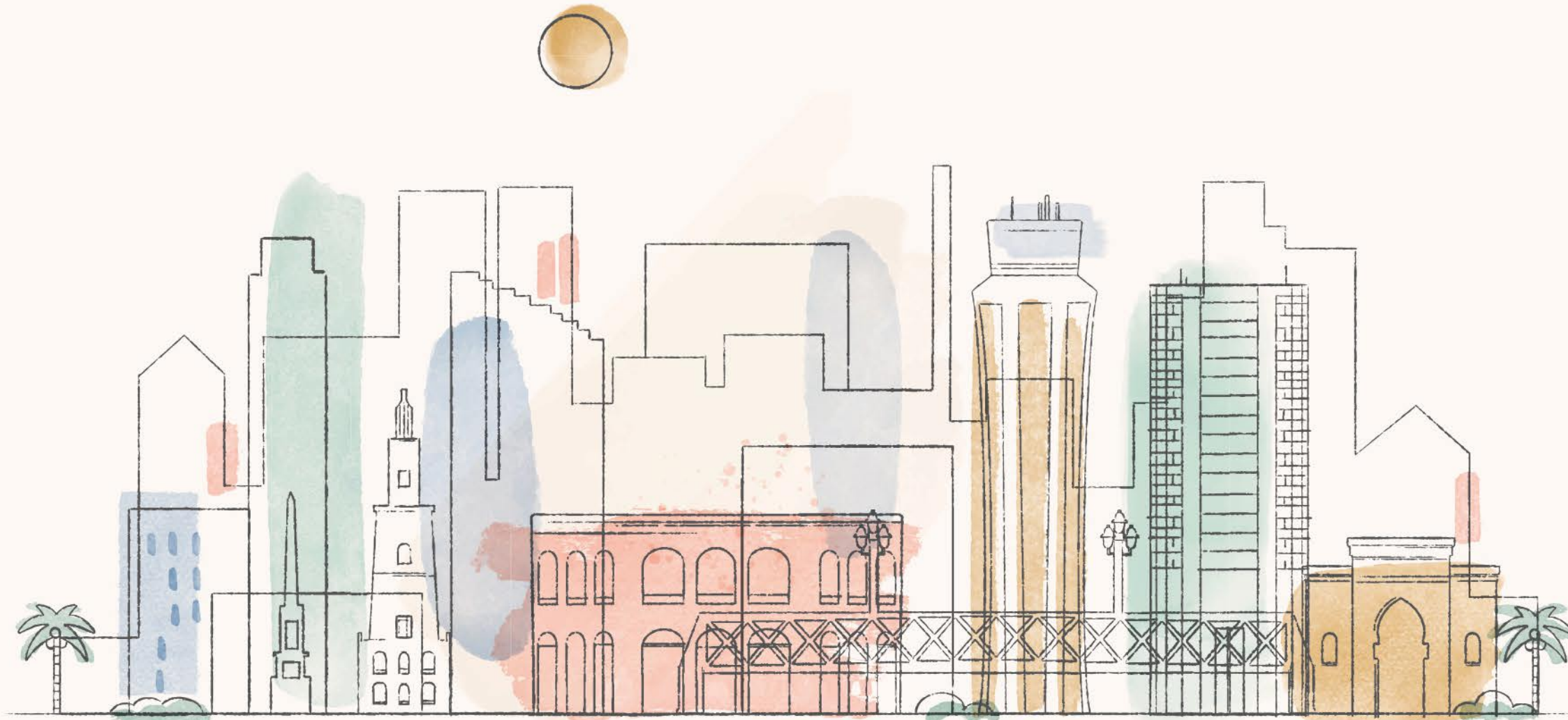


A PROJECT BY



SUN
REALTORS

THE
MAJESTY
5 BHK LAVISH APARTMENTS



CAMPUS FEATURES



Reception Foyer

- Luxurious entrance foyer with canopy
- Italian marble flooring with glass doors
- Air conditioned
- Comfortable sofa seating
- CCTV surveillance



Fire Safety (as per norms)

- Fire hydrant system with fire safety equipments
- Water sprinkler system as per fire safety norms



Luxurious Features

- Indoor game zone
- Gym with necessary equipments
- Multipurpose party hall
- Toddlers play area
- Sufficient car parking
- Handicap Accessibility
- Vastu Compliant



Landscape Area

- Children play area
- jogging track on landscaped lawn
- Well designed lush green garden
- Stunning water body fountains & sculptures
- Gazebo seating



Allied Facilities

- Space for Jain temple
- Impressive elevation of building
- large entrance gate of campus
- School van pick up stand
- Senior citizen seat out
- Intercom facility / VDP
- Boom barrier security at entry - exit



GROUND FLOOR PLAN



*#

THE
MAJESTY
 5 BHK LAVISH APARTMENTS



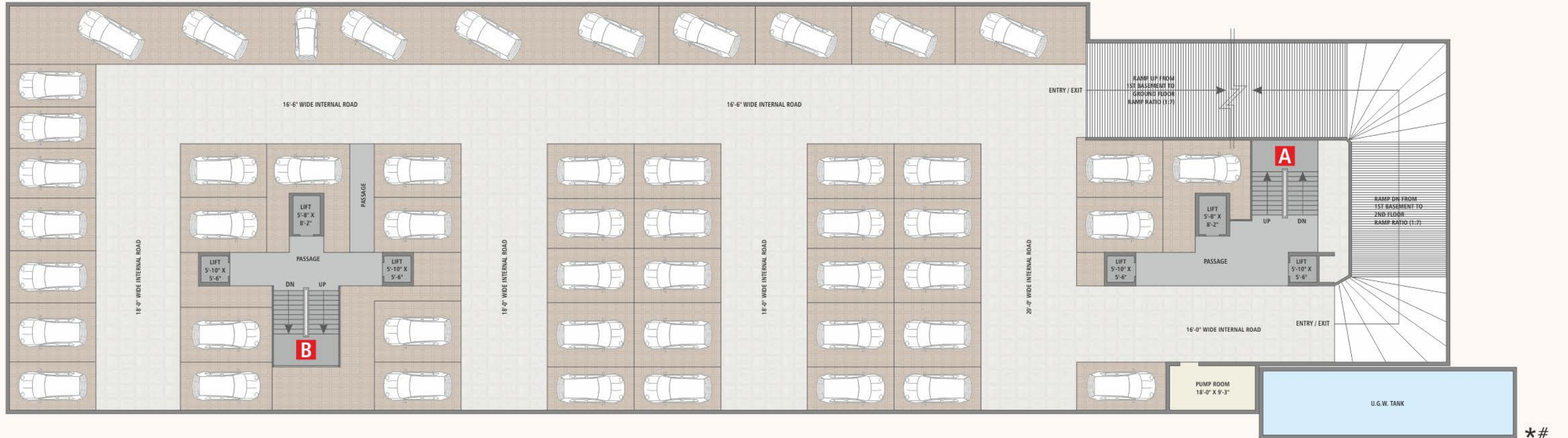
TYPICAL FLOOR PLAN

1ST TO 12TH FLOOR



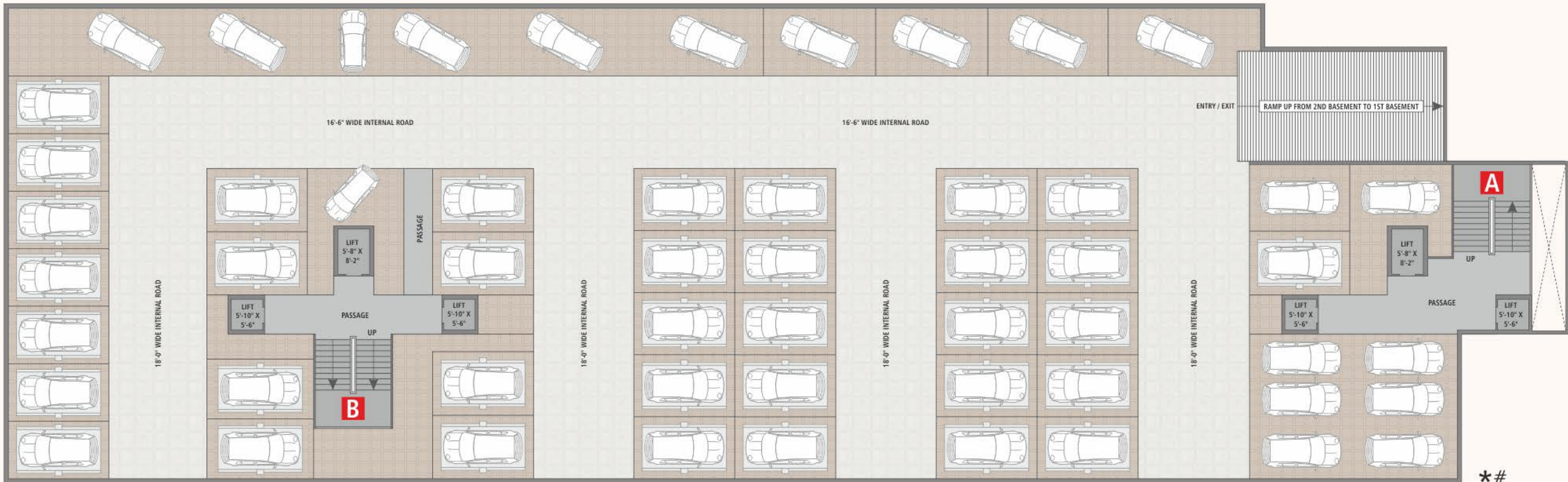
THE
MAJESTY
5 BHK LAVISH APARTMENTS

*#



1ST BASEMENT PLAN





*#

2ND BASEMENT PLAN





*#

BUILD. A

1ST TO 12TH FLOOR



THE MAJESTY
5 BHK LAVISH APARTMENTS



*#

BUILD. B

1ST TO 12TH FLOOR



THE MAJESTY
5 BHK LAVISH APARTMENTS

SPECIFICATIONS

Flooring

- Italian marble in living, dining, kitchen & master bedroom no. 1 & 2.
- Premium vitrified tiles in master bedroom no. 3 & 4 and wooden flooring in 1 bedroom.
- Wooden vitrified tiles in all balcony decks.



Kitchen

- Kitchen platform top of granite stone with sink.
- Premium granamite tiles dedo upto slab level.



Wash

- Kota stone flooring and granamite tiles on dedo.



Store

- Granite racks & dedo with standard vitrified tiles.



Toilet

- Master bath 1 & 2: Italian marble with granamite tile design.
- Master bath 3 & 4: Granite stone with granamite tile design.
- Bathroom 5: Granamite tile design.



Electrification

- Standard modular switches of premium quality.
- Standard company cables.
- Auto generator backup for sufficient electric points in flat..
- Distribution board with MCB & ELCB to ensure safety.
- AC, dish TV, internet & telephone point for each flat.
- 3 phase electric connection in each flat.



Air conditioning

- VRV system's outdoor unit.



Plumbing

- Plumbing work according to consultant for longevity of structure.
- Wall hung water closet with eco friendly water saving flush tanks.
- Hot water supply line from wash area to each bathrooms of flat.
- Sanitary ware of KOHLER / GROHE / JAQUAR or eq. company.
- Pressure pump for adequate water supply.



Railing & Window

- Glass / S.S. railing in flat and staircase area.
- Aluminum anodized section window.



External & Internal Walls & Finish

- Walls with double coat plaster.
- Single coat plaster with white putty on internal walls.



Elevators

- Mitsubishi, KONE, Johson, Schindler or eq. brand lifts.
- S.S. finish cabin with automatic doors.
- Equipped with fire alarms & intercom system.



Doors

- Decorative main door with polished veneer finish.
- Composite / Granite marble framing for internal doors.
- Internal flush doors with hardware fittings.
- Hard wares & fittings of standard quality company.



LEGAL DISCLAIMER

* All furniture / objects shown in the plan are for presentation & understanding purpose only. By no means, it will form a part of final deliverable product.

All the elements, objects, treatments, materials, equipment & color scheme shown are artisan's impression and purely for presentation purpose. By no means, it will form a part of the amenities, features or specification of our final products.