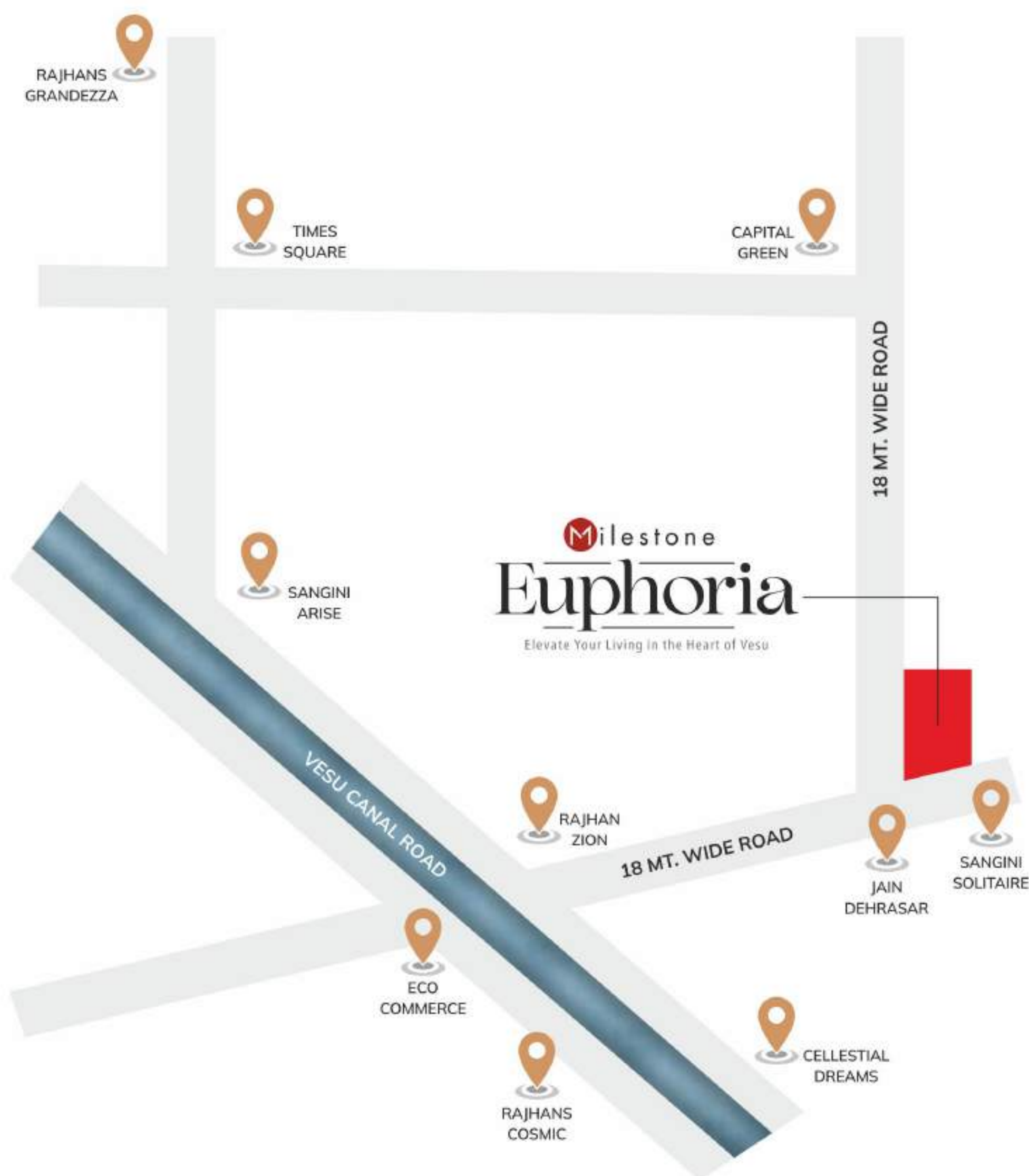


Milestone  
Euphoria  
Elevate Your Living in the Heart of Vesu

FOR LIFE'S EVERY STAGE, YOUR IDEAL SPACE!

## LOCATION



## VESU



SURAT'S MOST WELL PLANNED AREA

1

Send your children to the best schools and colleges near your home like G D Goenka, S D Jain, Agarwal Vidya Vihar, L P Savani, South Gujarat University, DRB commerce college, Bhagwan Mahavir college.

2

Shop for the best brands and watch the latest movies at nearby malls like VR, Rahul Raj etc.

3

Stay close to Surat's best clubs and enjoy the club lifestyle at C B Patel, Avadh Utopia, Lalbhai Club and Surat City Gymkhana.

4

Take your family for 5 star dining at over 50 nearby restaurants and cafes like Pavilion, Kaffyn, Meraki.

5

Travel easily across Surat using large roads and public transport like BRTS, VIP road and Canal road.

6

Shop for day-to-day needs at affordable prices at Metro Wholesale, Dhiraj Sons and Reliance Mart.

Milestone  
**Euphoria**  
Elevate Your Living in the Heart of Vesu

## A Splendorous Arrival

As you enter Milestone Euphoria's magnificence,  
you will experience the blend of architectural perfection & innovation.  
Undoubtedly, enhancing the visual splendour!





A Chorus Of Brilliance Beautifying Your Lifestyle.

Milestone  
**Euphoria**  
Elevate Your Living in the Heart of Vesu

Milestone  
**Euphoria**  
Elevate Your Living in the Heart of Vesu

Miles Away From Ordinary

Advertising a lifestyle of absolute comfort & luxury  
that is miles away from any half-useful imaginary residence.



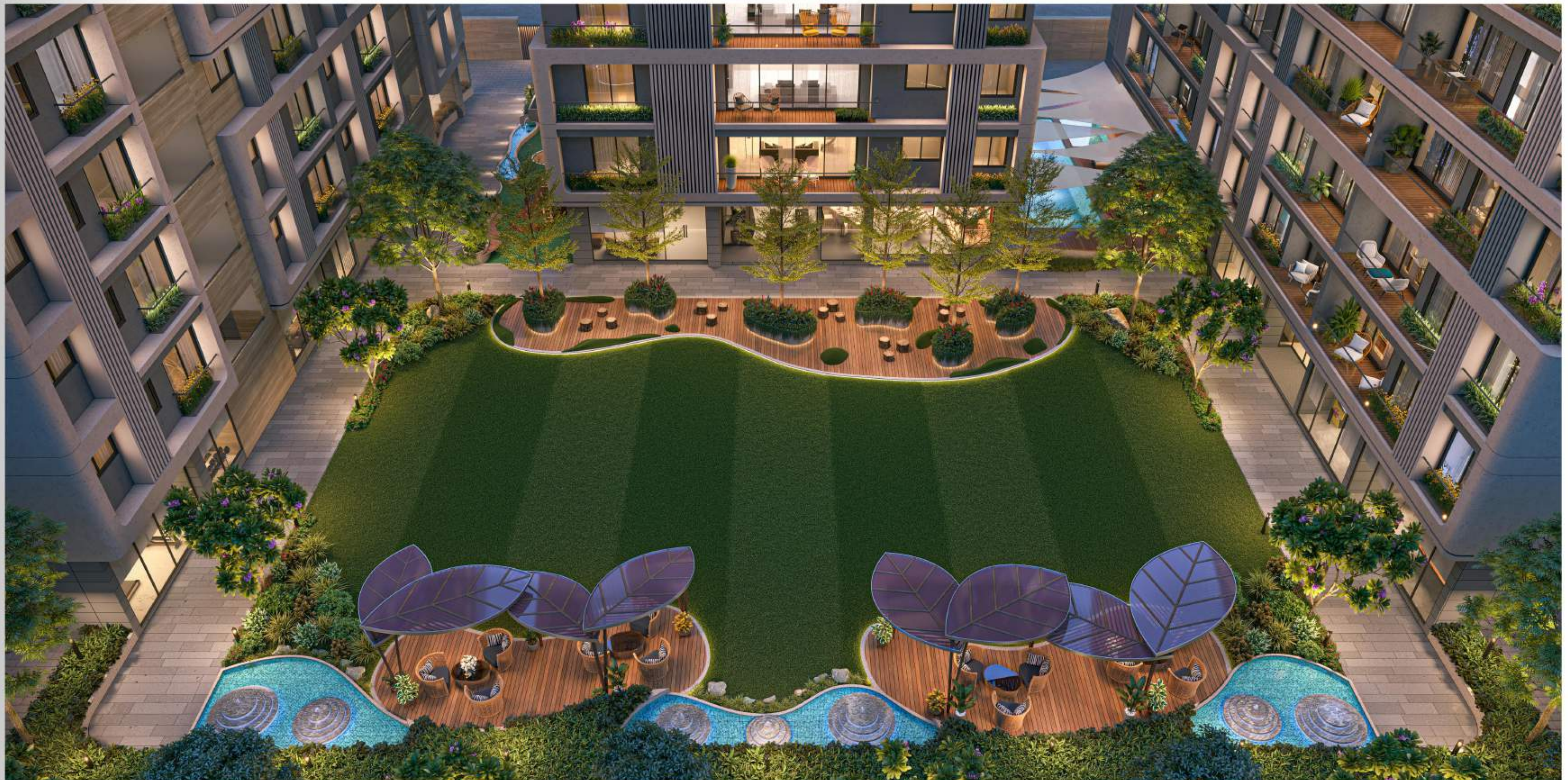


Milestone  
**Euphoria**  
Elevate Your Living in the Heart of Vesu

Milestone  
**Euphoria**  
Elevate Your Living in the Heart of Vesu

Where Every Moment Finds Its Perfect Setting

We craft scenic landscapes with senior citizen seating for tranquil moments, expansive party lawns for joyous gatherings, and charming gazebo seating for serene retreats amidst nature's embrace.





SWIMMING POOL



CHILDREN PLAY AREA



LARGE CENTRAL LAWN

## AMENITIES & OTHER FEATURES

- Banquet hall
- Gymnasium
- Swimming pool for adults and children
- Game zone
- Social club
- Children's play area
- Kids club
- Aromatic landscaped sit outs amidst
- waterbodies
- Large central garden
- Large fountain / sculpture
- Senior citizens corner
- Changing rooms
- Walking path around garden
- School bus pickup / drop-off area near watchman cabin for safety of kids
- Attractive entrance gate
- Grand reception lobby
- Fully automatic lift of Kone / equivalent in each building
- 24 X 7 CCTV surveillance for enhanced security
- Generator backup for common areas and adequate lights and fans in each flat

12.00 MT. WIDER ROAD



18.00 MT. WIDER ROAD

LAYOUT PLAN

# Milestone Euphoria

Elevate Your Living in the Heart of Vesu



BUILDING C

## Exclusive Bedrooms

Brilliantly designed bedrooms with an unwavering focus of providing exclusive living comfort. You are to rate it a perfect five stars out of five experience.



## Dining & Living Rooms

The living and dining rooms blend indoor & outdoor living.  
Outlining an experience that makes you feel like you have descended into your own dream like residence.

**Milestone**  
**Euphoria**  
Elevate Your Living in the Heart of Vesu



Stirring in the tranquillity of the night time.



## SPECIFICATIONS

### Flooring

- Italian marble in living room, dining and kitchen.
- Italian finished glossy tiles in all bedrooms.

### Kitchen

- Quartz stone platform with stainless steel sink.
- Designer glazed tiles dado above platform up to lintel level.
- Piped gas connection in kitchen.

### Wash

- Vitrified full body tiles in flooring and glazed tiles up to lintel level.

### Bathrooms

- Designer glazed tiles on floor and up to lintel level on walls.
- Cera / equivalent sanitary ware. Wall hung WC with soft close seat cover and wall hung designer basin.
- Jaquar / equivalent bath fittings with single lever diverter for comfort bathing experience.
- Provision for hot water supply in all bathrooms.

### Doors

- Wooden frame and laminated flush door at entrance.
- Granite frame and painted flush doors in all other rooms for flexibility in interior designing.

### Windows

- Anodized aluminum windows with granite frames.
- Louvered aluminum windows with granite frame in bathrooms.

### Electrification

- Concealed electrification with modular switches of standard ISI mark.

### Internal Finish

- Putty finish on walls and ceilings.

### Parking

- Allotted car parking for each flat 4BHK – 3 cars , 3BHK – 2 cars.

### Floor Height

- 10'-5" floor to floor height.